

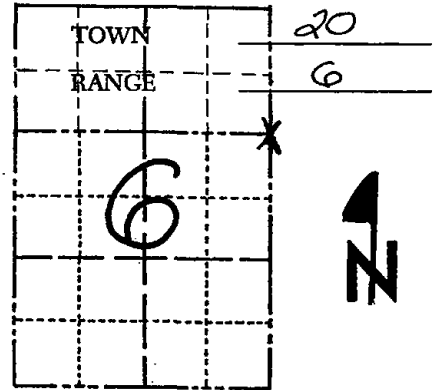
\* 1 3 5 \*

135

# Government Land Corner Certificate

ADAMS County  
 TYPE OF MONUMENT: HARRISON  
 STATE PLANE COORDINATES: N \_\_\_\_\_  
 E \_\_\_\_\_  
 ELEVATION — M.S.L. DATUM: \_\_\_\_\_  
 THETA ANGLE: \_\_\_\_\_  
 FIELD BOOK: 88 PAGE 8  
 DRAWN BY: L. COOMBS

CORNER NO. 135  
 SECTION 6  
 TOWN 20  
 RANGE 6



LOCATION  
(Indicated by 'X')

## BASIS FOR MONUMENT LOCATION

Show info such as: History of corner, with reference to Vol. and pg., dates, surveyor; exact description of monument replaced; if location computed, by taped or EDM traverse; landowner remarks, etc. (Use reverse side if necessary)

Excavated with backhoe, found nothing.  
 Corner is set on a straight line between the NE and E  $\frac{1}{4}$  corners of this section, and in proportion to the original survey distances.

OK 5-7-84 SS-DK

OK 3-7-94 GR-JG

1-GONE, 1-NEW 1-21-99 JG-DR

OK, 2-25-04-JG

2 NEW TREES 4-14-09 SS

SEAL:



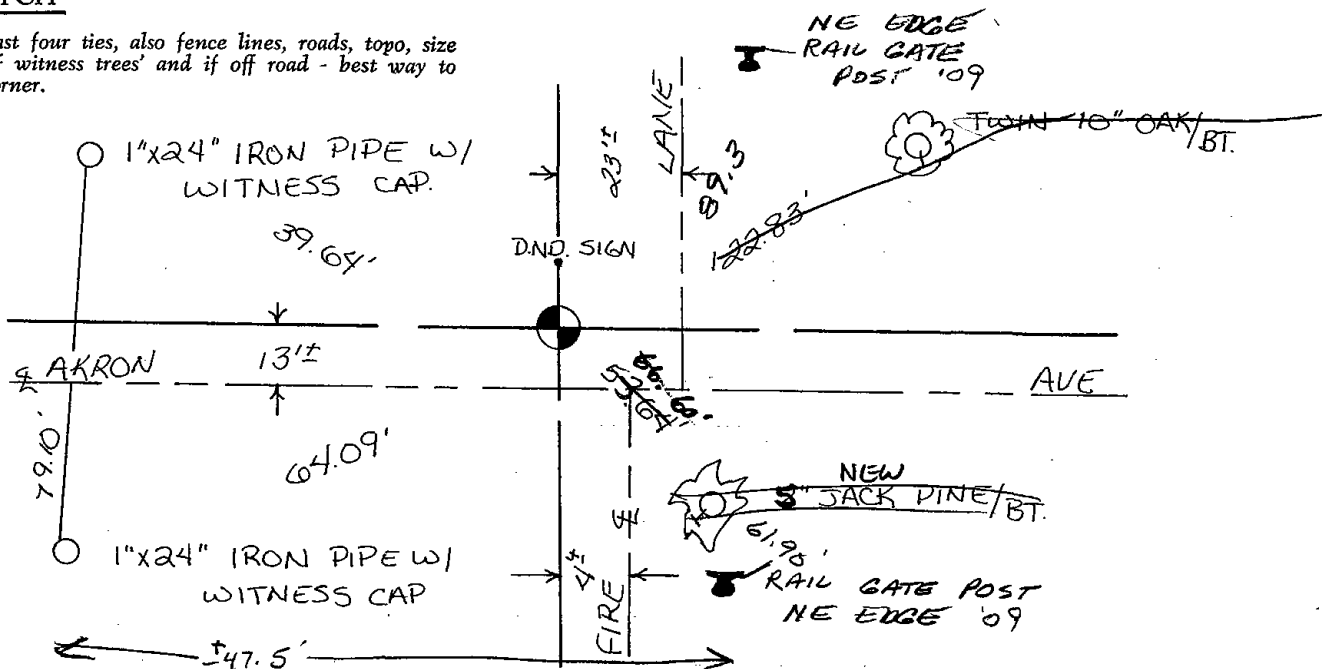
DATA SHOWN HERE ON  
CERTIFIED CORRECT:

*Anthony B. Kiedrowski*  
Registered Land Surveyor

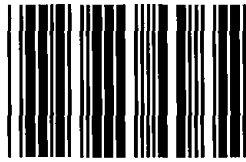
DATE: 8/4/81

## TIE SKETCH

Show at least four ties, also fence lines, roads, topo, size and type of witness trees' and if off road - best way to arrive at corner.







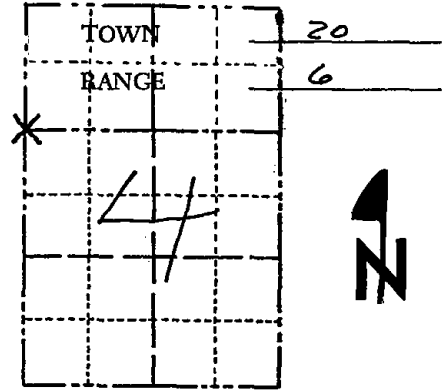
\* 1 3 6 \*

136

# Government Land Corner Certificate

ADAMS County  
 TYPE OF MONUMENT: HARRISON MONUMENT  
 STATE PLANE COORDINATES: N \_\_\_\_\_  
 E \_\_\_\_\_  
 ELEVATION — M.S.L. DATUM: \_\_\_\_\_  
 THETA ANGLE: \_\_\_\_\_  
 FIELD BOOK: SECT. FILE PAGE \_\_\_\_\_  
 DRAWN BY: G. RHINENART

CORNER NO. 136  
 SECTION 4  
 TOWN 20  
 RANGE 6



LOCATION  
 (Indicated by 'X')

SEAL:



## BASIS FOR MONUMENT LOCATION

Show info such as: History of corner, with reference to Vol. and pg., dates, surveyor; exact description of monument replaced; if location computed, by taped or EDM traverse; landowner remarks, etc. (Use reverse side if necessary)

Excavated with bache. Found sandstone believed set by M.C. Smith in a resurvey of part of Sec. 4. Lowered stone and set Harrison on top. Location verified by EDM/t-2 traverse.

Stone found when doing the survey for Evelyn Salinger.

See the reverse side for updated map 5-11-84

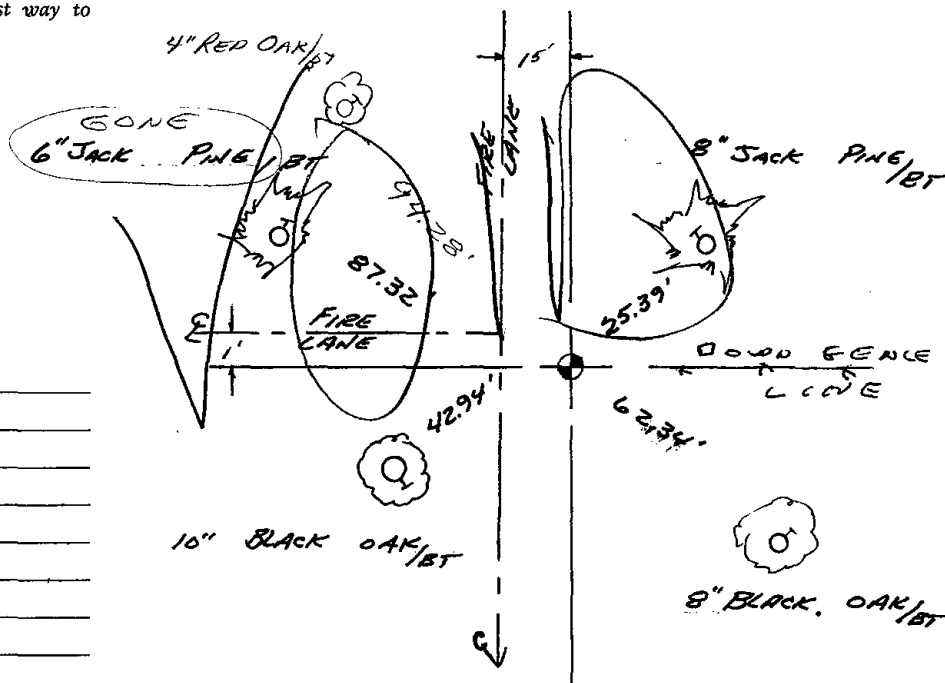
DATA SHOWN HERE ON  
 CERTIFIED CORRECT:

*Anthony B. Kiedrowski*  
 Registered Land Surveyor

DATE: 7/5/77

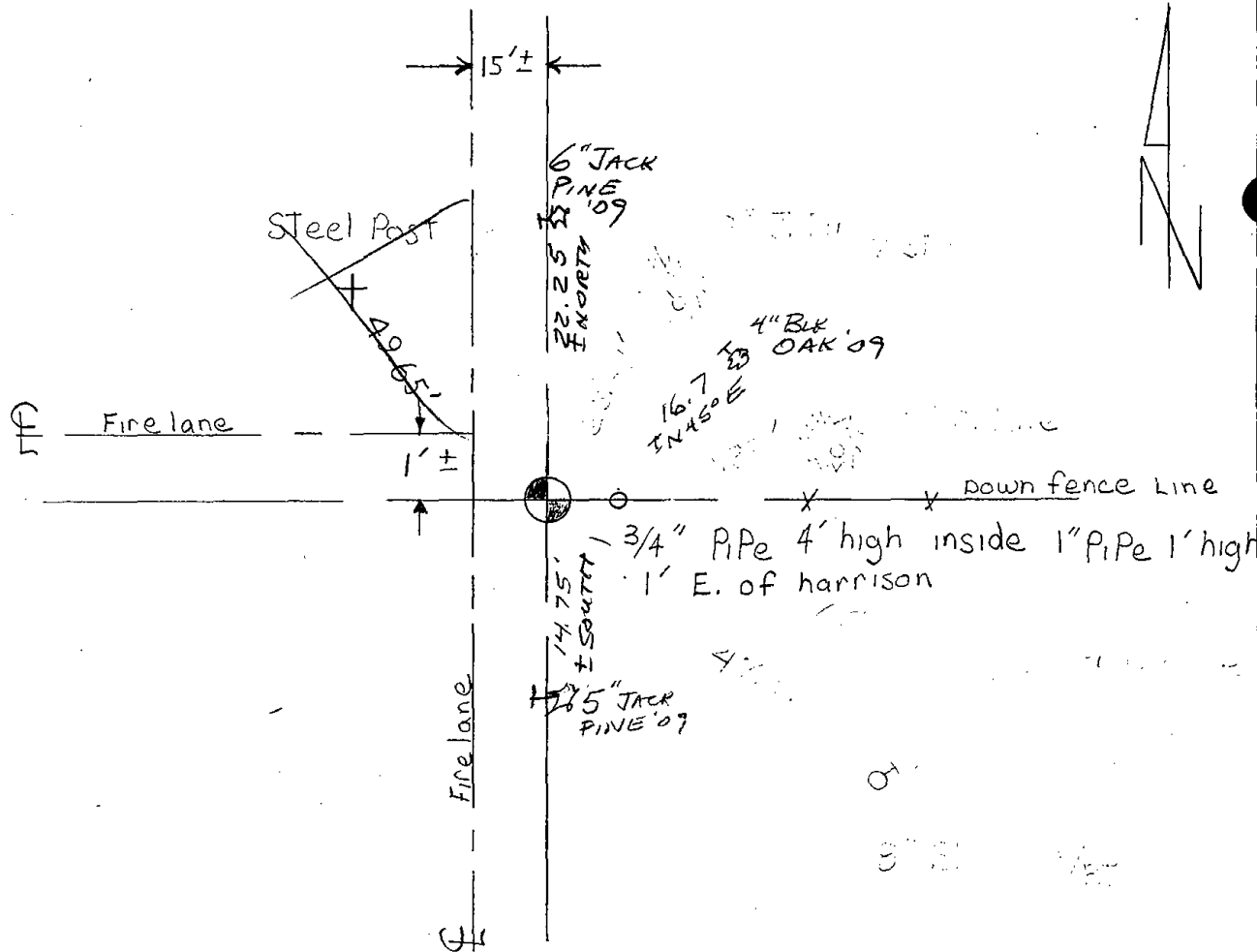
## TIE SKETCH

Show at least four ties, also fence lines, roads, topo, size and type of witness trees' and if off road - best way to arrive at corner.



## MAINTENANCE RECORD

Date	Init.	Remarks
8-15-79	RN-RK	Mon. O.K. - RETIED

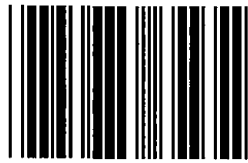


Map was updated on 5-11-84 2 new ties were set SS-DK

OK 3-7-94 JG-GR

2-NEW TIES, MON. OK 3-1-99-JG

3 NEW TIES 3-13-09 SS



\* 1 3 7 \*

137

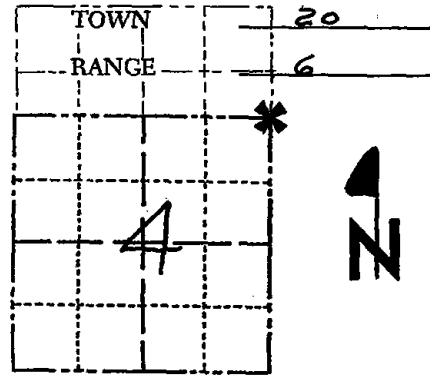
# ADAMS COUNTY

CORNER NO. 574

## Survey Monument Record

SECTION 4

TYPE OF MONUMENT: Harrison standard



STATE PLANE COORDINATES: N \_\_\_\_\_  
E \_\_\_\_\_

ELEVATION — M.S.L. DATUM: \_\_\_\_\_

THETA ANGLE: \_\_\_\_\_

FIELD BOOK: \_\_\_\_\_ PAGE \_\_\_\_\_

### BASIS FOR MONUMENT LOCATION

(Use reverse side if necessary)

Show info such as: History of corner, with reference to Vol. and pg, dates, surveyor; exact description of monument replaced; if location computed, by taped or EDM traverse; landowner remarks, etc.

SEAL:

Set Corner proportionately and on line from adjacent corners. Excavation and extensive search yielded no conclusive evidence.



Mon. O.K. - 1' BELOW SURFACE 3-23-79 R.N.-OW

see the reverse side for updated map 5-11-84

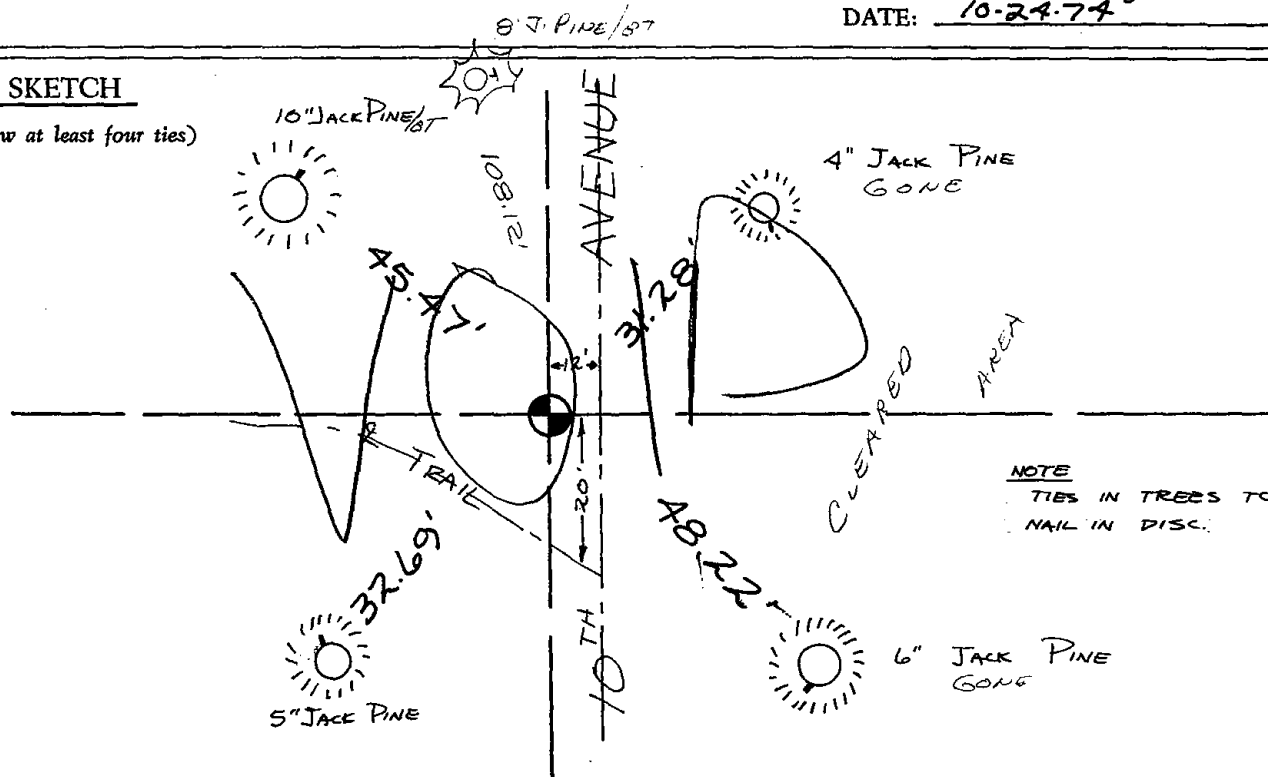
CERTIFIED CORRECT:

Dale C. Hagen  
Registered Land Surveyor

DATE: 10-24-74

### TIE SKETCH

(Show at least four ties)





6" WHITE PINE '09  
NOT BLAZED - GONE  
W. PINE IN VICINITY

15" J. Pine/  
DND SIGN BT

DND SIGN  
10" J. Pine/BT

45.47'  
DND

108.12'

10<sup>TH</sup> AVE.

PINE PLANTATION

Cleared Area

32.05' Steel Post DISTURBED

E TRAIL

20'

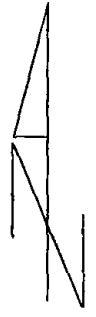
5" J. Pine  
GONE 99  
56' J. PINE  
24 '09

12'±

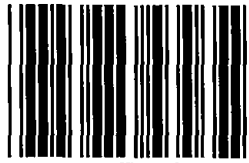
64.8

Cleared Area

5" JACK PINE '09



- Map updated 5-11-84 SS-DK
- OK. 2-23-89 SS
- 1-GONE 3-7-99 JG-GR
- OK 2-16-99-JG-SS
- OK, 2-27-04-JG
- 3 NEW TREES 3-13-09 SS



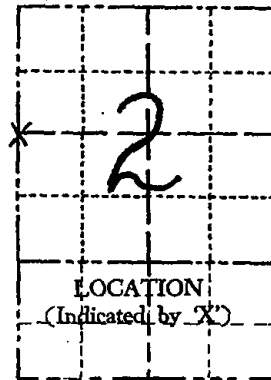
\* 1 3 8 \*

138

# Government Land Corner Certificate

ADAMS County  
 TYPE OF MONUMENT: HARRISON  
 STATE PLANE COORDINATES: N \_\_\_\_\_  
 E \_\_\_\_\_  
 ELEVATION — M.S.L. DATUM: \_\_\_\_\_  
 THETA ANGLE: \_\_\_\_\_  
 FIELD BOOK: 69 (102) PAGE 112 (109)  
 DRAWN BY: L. COOMBS

CORNER NO. 138  
 SECTION 2  
 TOWN 20  
 RANGE 6



## BASIS FOR MONUMENT LOCATION

Show info such as: History of corner, with reference to Vol. and pg., dates, surveyor; exact description of monument replaced; if location computed, by taped or EDM traverse; landowner remarks, etc. (Use reverse side if necessary)

Scraped area with front end bucket. Found 6x6x18" squared sandstone next to remains of 6" dia completely rotted fence post. Accepted the stone as the corner and replaced it with a Harrison monument. Placed the stone in the ground immediately north of the Harrison. Can find no record of stone. Location verified by EDM T-2 traverse of the area.

SEAL:



DATA SHOWN HERE ON CERTIFIED CORRECT:

Anthony B. Kiedrowski  
 Registered Land Surveyor

DATE: 8/4/81

Found stone needs a Harrison ties are ok 7-9-84 GR-DK

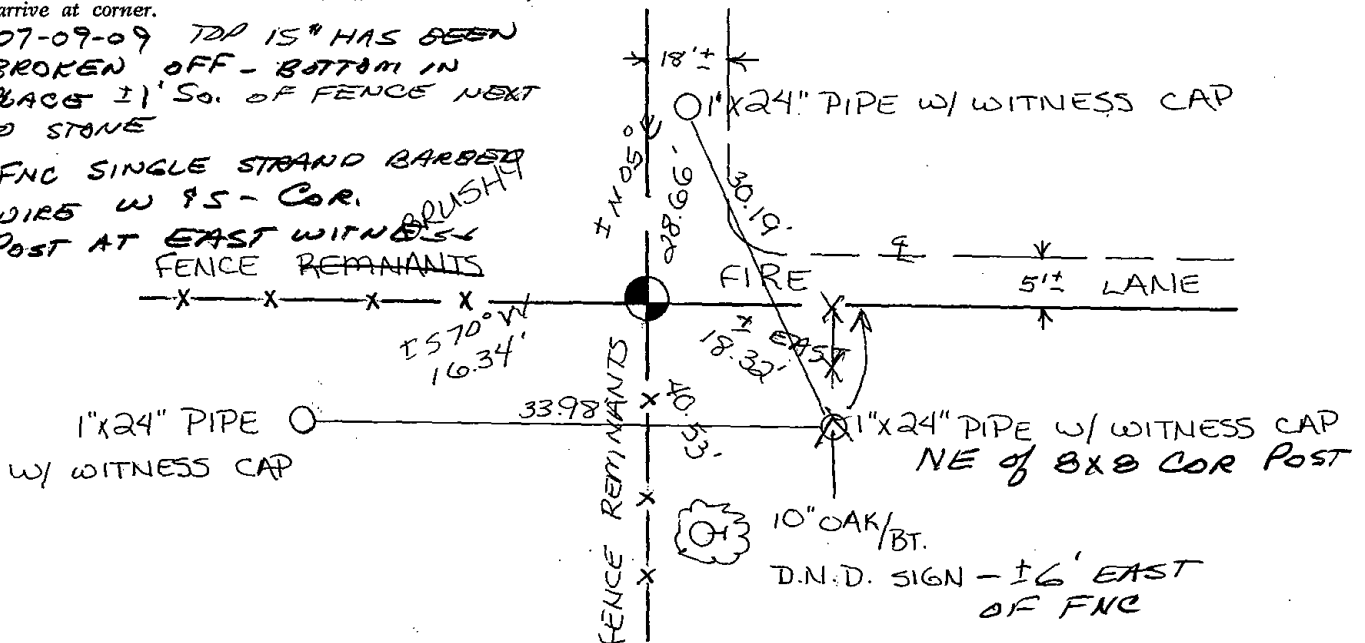
Harrison set on 7-16-84 using existing ties Mk-DK

## TIE SKETCH

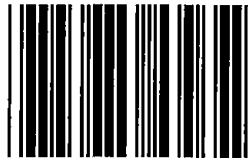
Show at least four ties, also fence lines, roads, topo, size and type of witness trees and if off road - best way to arrive at corner.

07-09-09 TDP 15" HAS BEEN BROKEN OFF - BOTTOM IN PLACE 21' So. OF FENCE NEXT TO STONE

FNC SINGLE STRAND BARBED WIRE W 95 - COR. POST AT EAST WITNESS BRUSH FENCE REMNANTS







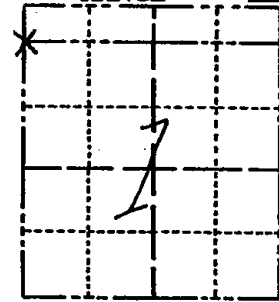
\* 1 3 9 \*

139

# Government Land Corner Certificate

ADAMS County  
 TYPE OF MONUMENT: HARRISON  
 STATE PLANE COORDINATES: N \_\_\_\_\_  
 E \_\_\_\_\_  
 ELEVATION — M.S.L. DATUM: \_\_\_\_\_  
 THETA ANGLE: \_\_\_\_\_  
 FIELD BOOK: 86 PAGE 97  
 DRAWN BY: NJ

CORNER NO. 139  
 SECTION 1  
 TOWN 20  
 RANGE 6



LOCATION  
 (Indicated by 'X')

## BASIS FOR MONUMENT LOCATION

Show info such as: History of corner, with reference to Vol. and pg., dates, surveyor; exact description of monument replaced; if location computed, by taped or EDM traverse; landowner remarks, etc. (Use reverse side if necessary)

No record of a-y resurveys. Could find no evidence of the original or subsequent monument. This corner is set on a straight line between the west 1/4 corner and the NW corner of this section and in proportion to the original notes.

Ok 7-9-84 GR-DK

SEAL:



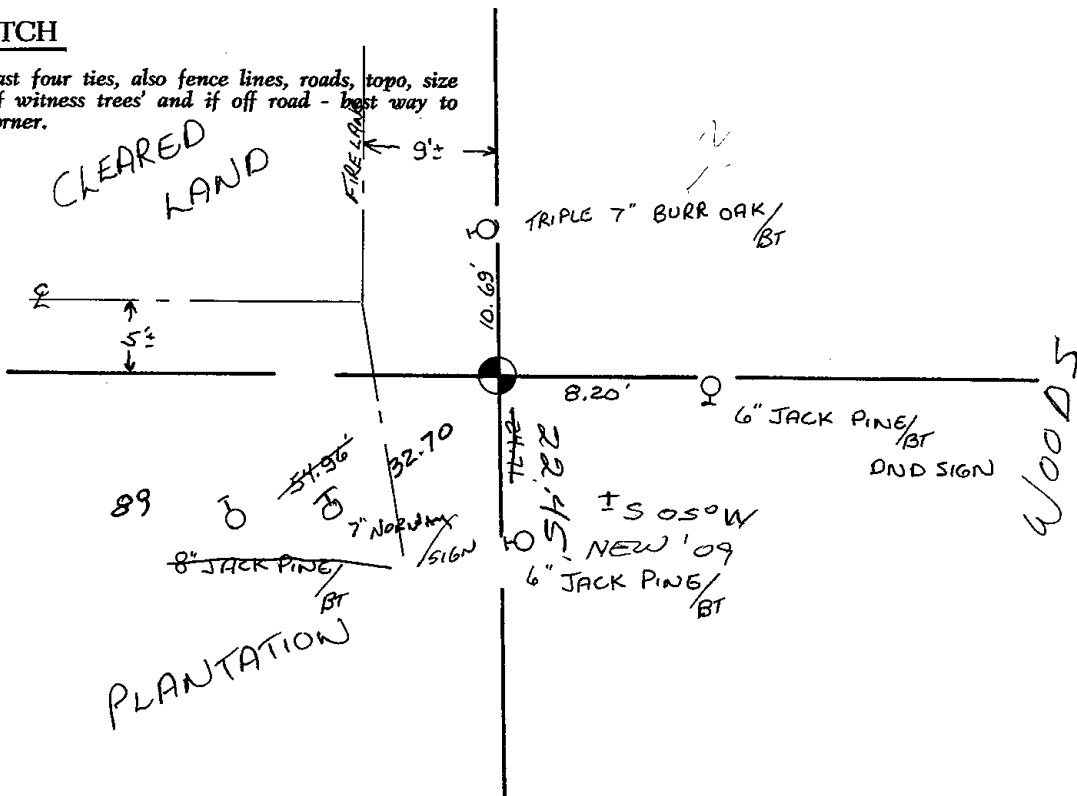
DATA SHOWN HERE ON  
 CERTIFIED CORRECT:

*Anthony B. Kiedrowski*  
 Registered Land Surveyor

DATE: 1/5/81

## TIE SKETCH

Show at least four ties, also fence lines, roads, topo, size and type of witness trees and if off road - best way to arrive at corner.







\* 1 4 1 \*

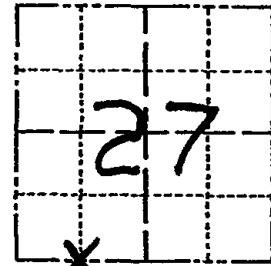
141



# Government Land Corner Certificate

Adams County  
 TYPE OF MONUMENT: 2" x 24" I. P.  
 STATE PLANE COORDINATES: N \_\_\_\_\_  
 E \_\_\_\_\_  
 ELEVATION — M.S.L. DATUM: \_\_\_\_\_  
 THETA ANGLE: \_\_\_\_\_  
 FIELD BOOK: 86 PAGE 109  
 DRAWN BY: T.H.

CORNER NO. SW140 Cor.  
 SECTION 27  
 TOWN 20  
 RANGE 6



LOCATION  
(Indicated by 'X')

SEAL:

### BASIS FOR MONUMENT LOCATION

Show info such as: History of corner, with reference to Vol. and pg., dates, surveyor; exact description of monument replaced; if location computed, by taped or EDM traverse; landowner remarks, etc. (Use reverse side if necessary)

Set on line half way between section and quarter corner.



DATA SHOWN HERE ON  
CERTIFIED CORRECT:

AB Kiedrowski  
Registered Land Surveyor  
1/2/81

DATE: \_\_\_\_\_

### TIE SKETCH

Show at least four ties, also fence lines, roads, topo, size and type of witness trees and if off road - best way to arrive at corner.

