

06 SECTION    20 TOWN    06 RANGE

# ADAMS COUNTY

COUNTY CORNER NO: 2  
ROMPORTOL ID: 42006069020

## PUBLIC LAND SURVEY MONUMENT RECORD

TYPE OF MONUMENT: HARRISON (BROKEN TOP)  
ADAMS COUNTY COORDINATES, NAD 83 (2007)

N. 321724.899

E. 527873.434

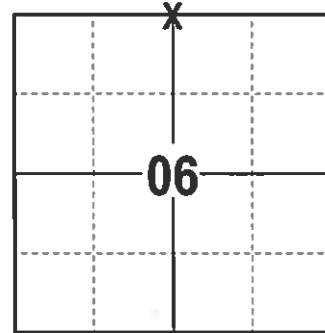
ELEVATION-        DATUM       

FIELD WORK DATE: 12/14/2016

### BASIS FOR MONUMENT LOCATION

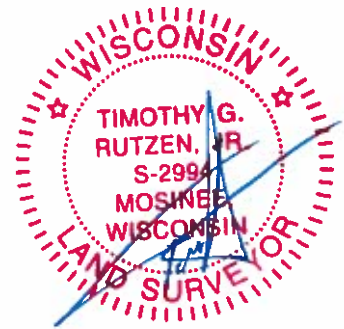
1981 - PLS 878 EXCAVATED AND FOUND NOTHING. A HARRISON WAS SET PROPORTIONAL TO THE ORIGINAL SURVEY DISTANCES BETWEEN THE NW AND NE CORNERS AND ON A STRIGHT LINE BETWEEN THE WOOD COUNTY CORNERS.

2017 - PLS 2994 FOUND EXISTING HARRISON WITH A BROKEN TOP 18 INCHES BELOW THE ROAD SURFACE AND 2 EXISTING TIES. THE HARRISON AGREES WITH EXISTING TIES. ACCEPTED HARRISON AND SET 3 NEW TIES.



**LOCATION**  
(INDICATE CORNER BY "X")

SEAL:

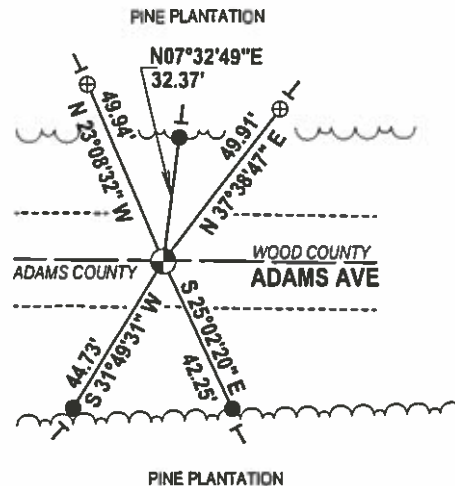


DATA SHOWN HERE ON THIS TIE SHEET IS CORRECT AND COMPLETE TO THE BEST OF MY KNOWLEDGE AND BELIEF.

PROFESSIONAL LAND SURVEYOR

DATE 2/9/17

### - TIE SKETCH

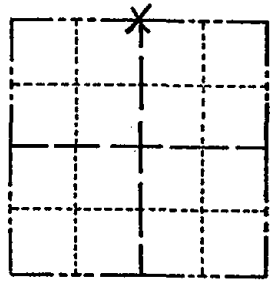


- 3/4" x 18" IRON REBAR SET, 1.50#/FT
- ⊕ ALUMINUM CAPPED IRON PIPE FOUND
- ⊙ HARRISON FOUND
- VINYL "T" POST

# Government Land Corner Certificate

ADAMS County  
 TYPE OF MONUMENT: HARRISON  
 STATE PLANE COORDINATES: N \_\_\_\_\_  
 E \_\_\_\_\_  
 ELEVATION — M.S.L. DATUM: \_\_\_\_\_  
 THETA ANGLE: \_\_\_\_\_  
 FIELD BOOK: 69 PAGE 119  
 DRAWN BY: L.C.

CORNER NO. 2  
 SECTION 6  
 TOWN 20  
 RANGE 6



LOCATION  
(Indicated by 'X')

## BASIS FOR MONUMENT LOCATION

Show info such as: History of corner, with reference to Vol. and pg., dates, surveyor; exact description of monument replaced; if location computed, by taped or EDM traverse; landowner remarks, etc. (Use reverse side if necessary)

Excavated with backhoe, found nothing. This corner is set in proportion to the original survey distances between the NW and NE corners of this section, and on a straight line between adjacent Wood County Corners.

Ok 5-7-84 SS-DK

SEAL:



DATA SHOWN HERE ON CERTIFIED CORRECT:

*Anthony B. Kiedrowski*  
Registered Land Surveyor

DATE: 6/17/81

## TIE SKETCH

Show at least four ties, also fence lines, roads, topo, size and type of witness trees and if off road - best way to arrive at corner.

