

04 SECTION 20 TOWN 06 RANGE

ADAMS COUNTY

COUNTY CORNER NO: 6
 ROMPORTOL ID: 42006049020

PUBLIC LAND SURVEY MONUMENT RECORD

TYPE OF MONUMENT: HARRISON
 ADAMS COUNTY COORDINATES, NAD 83 (2007)

N. 321578.594

E. 538471.079

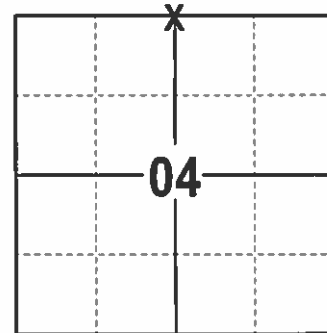
ELEVATION- --- DATUM ---

FIELD WORK DATE: 12/20/2016

BASIS FOR MONUMENT LOCATION

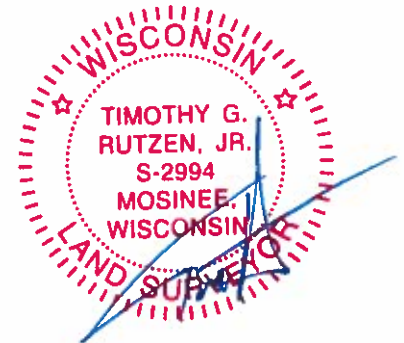
1974 - PLS 1103 EXCAVATED AND DID AN EXTENSIVE SEARCH AND FOUND NO CONCLUSIVE EVIDENCE. SET A HARRISON ON LINE BETWEEN THE NE AND NW CORNERS AND ON THE CORRECTION LINE.

2017 - PLS 2994 FOUND EXISTING HARRISON AND 1 WITNESS TREE. THE HARRISON AGREES WITH THE EXISTING WITNESS TREE. ACCEPTED HARRISON AND AND SET 2 NEW TIES AND TIED TO 2 EXISTING IRONS.



LOCATION
 (INDICATE CORNER BY "X")

SEAL:

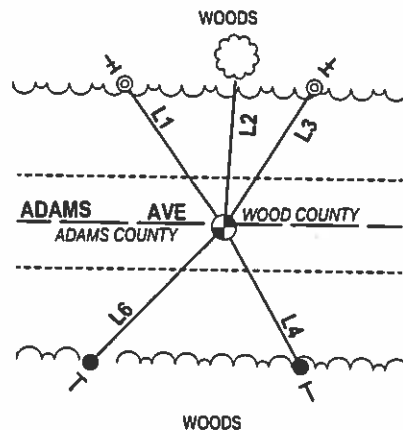
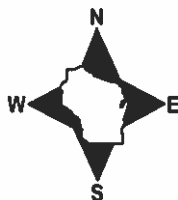


DATA SHOWN HERE ON THIS TIE SHEET IS CORRECT AND COMPLETE TO THE BEST OF MY KNOWLEDGE AND BELIEF.

PROFESSIONAL LAND SURVEYOR

DATE 2/9/17

TIE SKETCH



- 3/4" x 18" IRON REBAR SET, 1.50#/FT
- ⊙ 3/4" IRON REBAR FOUND
- ⊙ HARRISON FOUND
- └ VINYL "T" POST
- + EXISTING STEEL POST
- ☼ WITNESS TREE FOUND

LINE	BEARING	DISTANCE
L1	N 34°44'23" W	45.41'
L2	N 04°35' E	44'±
L3	N 33°04'16" E	43.29'
L4	S 28°36'48" E	41.39'
L6	S 45°05'03" W	49.56'

ADAMS COUNTY

CORNER NO. 575

6

Survey Monument Record

SECTION 4

TYPE OF MONUMENT: HARRISON STANDARD

TOWN 20

STATE PLANE COORDINATES: N

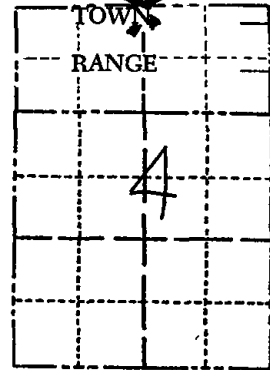
RANGE 6

E

ELEVATION - M.S.L. DATUM:

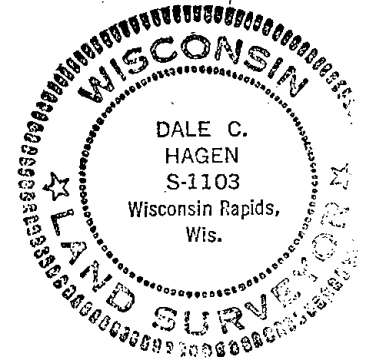
THETA ANGLE:

FIELD BOOK: PAGE



LOCATION (Indicated by 'X')

SEAL:



BASIS FOR MONUMENT LOCATION

(Use reverse side if necessary)

Show info such as: History of corner, with reference to Vol. and pg, dates, surveyor; exact description of monument replaced; if location computed, by taped or EDM traverse; landowner remarks, etc.

Excavation and extensive search yielded no conclusive evidence. Set corner on line between NE and NW section corners and on correction line.

Ok 5-11-84 DK-SS

- OK RR-RW AUG. 179
- OK 2-23-89 SS
- OK 3-7-94 JG-CR
- OK 2-12-99-JG
- 1-GONE, 2-NEW, 2-27-04-JG
- 1-NEW TIE 3-13-09 SS

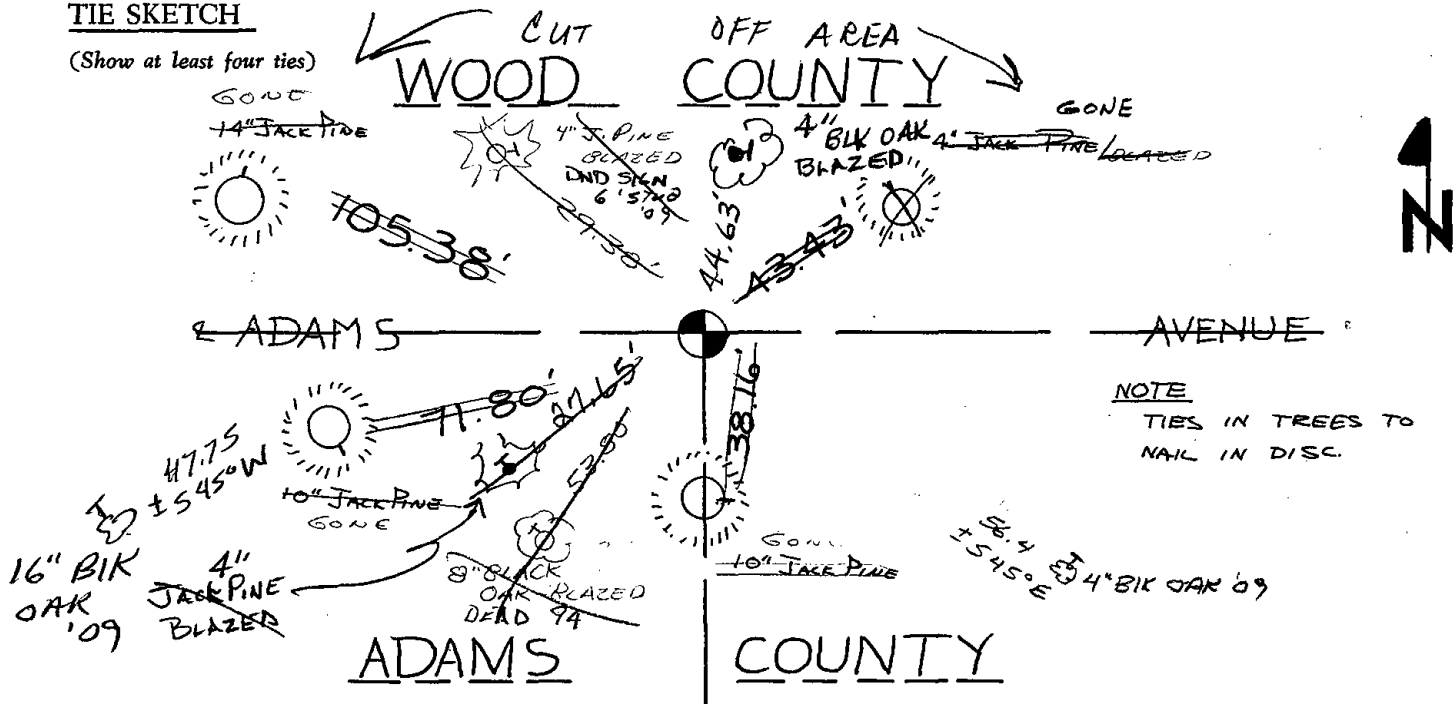
CERTIFIED CORRECT:

Dale C. Hagen
Registered Land Surveyor

DATE: 10/21/74

TIE SKETCH

(Show at least four ties)



NOTE
TIES IN TREES TO
NAIL IN DISC.