

03 SECTION 20 TOWN 06 RANGE

ADAMS COUNTY

COUNTY CORNER NO: 8
ROMPORTOL ID: 42006039020

PUBLIC LAND SURVEY MONUMENT RECORD

TYPE OF MONUMENT: HARRISON (BROKEN TOP)
ADAMS COUNTY COORDINATES, NAD 83 (2007)

N. 321473.691

E. 543759.451

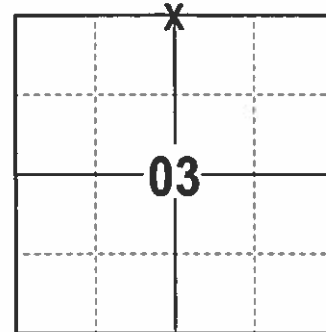
ELEVATION- --- DATUM ---

FIELD WORK DATE: 12/20/2016

BASIS FOR MONUMENT LOCATION

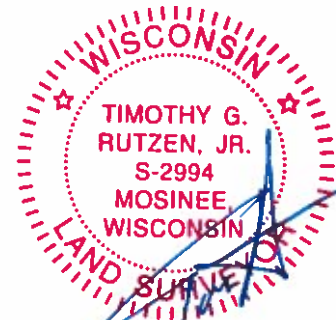
1981- PLS 878 STATED THERE WAS NO PREVIOUS MONUMENTATION. SET A HARRISON HALF WAY BETWEEN THE NW AND NE CORNERS AND ONLINE BETWEEN THE ADJACENT WOOD COUNTY CORNERS.

2017 - PLS 2994 FOUND EXISTING HARRISON WITH A BROKEN TOP, ONE WITNESS TREE AND 2 EXISTING TIES THAT WERE DISTURBED. THE HARRISON AGREES WITH THE EXISTING TIES ONCE RESET UPRIGHT AND THE WITNESS TREE. ACCEPTED HARRISON, SET 2 NEW TIES AND RETIED TO 2 EXISTING IRONS THAT WERE RESET UPRIGHT.



LOCATION
(INDICATE CORNER BY "X")

SEAL:

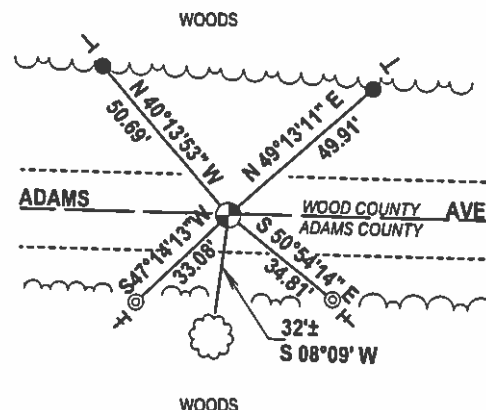
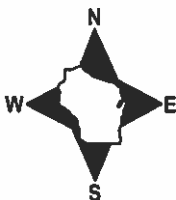


DATA SHOWN HERE ON THIS TIE SHEET IS CORRECT AND COMPLETE TO THE BEST OF MY KNOWLEDGE AND BELIEF.

PROFESSIONAL LAND SURVEYOR

DATE 2/9/17

TIE SKETCH



- 3/4" x 18" IRON REBAR SET, 1.50#/FT
- ⊙ 3/4" IRON REBAR FOUND
- ⊙ HARRISON FOUND
- VINYL "T" POST
- EXISTING STEEL POST
- ⊙ WITNESS TREE FOUND

