

PUBLIC LAND SURVEY MONUMENT RECORD

TYPE OF MONUMENT: HARRISON (BROKEN-TOP)
ADAMS COUNTY COORDINATES, NAD 83 (2007)

N. 316581.849

E. 525528.772

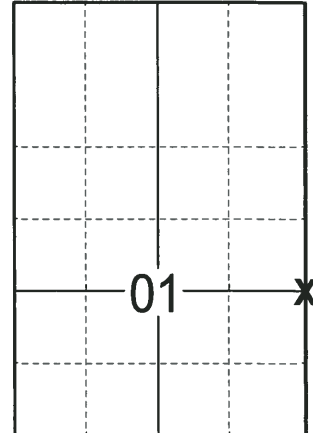
ELEVATION- DATUM

FIELD WORK DATE: 02/15/2018

BASIS FOR MONUMENT LOCATION

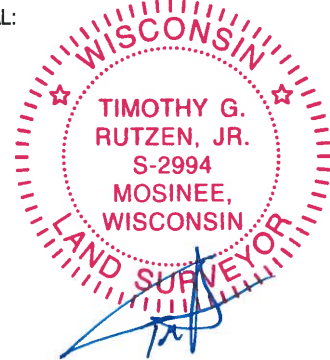
1977 - PLS 878 EXCAVATED WITH A BACKHOE AND FOUND NOTHING. NO RESURVEYS OF RECORD. CORNER WAS CALCULATED ON A STRAIGHT LINE BETWEEN SECTION CORNERS, BUT NOT PROPORTIONAL DUE TO NOT MATCHING POSSESSION LINES BY 30±. THEREFORE, TOOK POSSESSION LINES INTO CONSIDERATION IN SETTING THE NORTH-SOUTH LOCATION OF THIS CORNER. SET A HARRISON MONUMENT AND TIED OUT.

2018 - PLS 2994 FOUND HARRISON WITH A BROKEN-TOP 18" BELOW THE ROAD SURFACE AND 2 TIES. THE MONUMENT AGREES WITH TIES. ACCEPTED THE HARRISON WITH BROKEN-TOP AS THE CORNER. SET 2 NEW TIES AND MEASURED TO THE TIES.



LOCATION
(INDICATE CORNER BY "X")

SEAL:



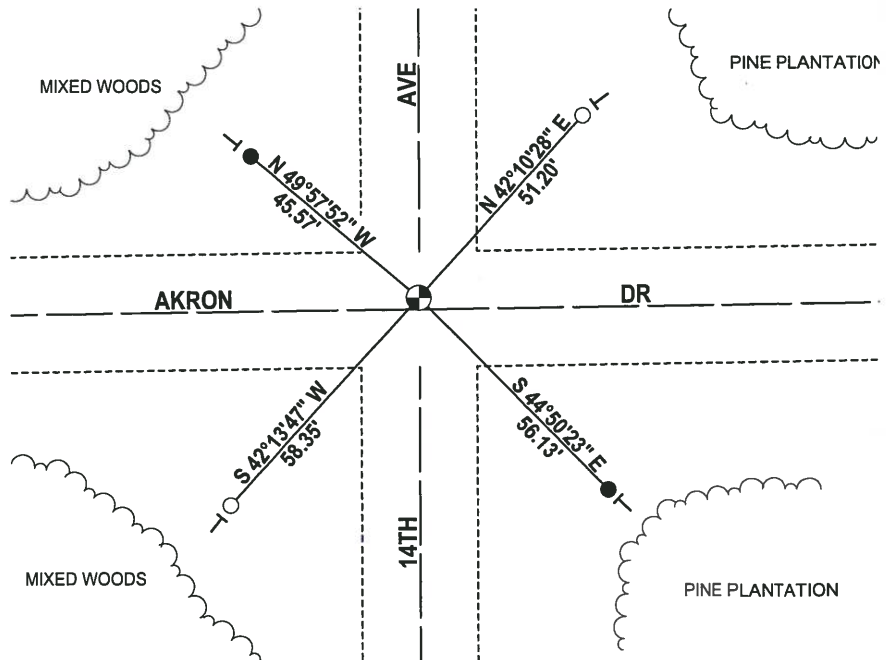
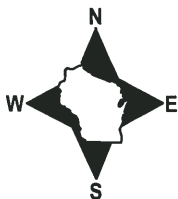
DATA SHOWN HERE ON THIS TIE SHEET IS CORRECT AND COMPLETE TO THE BEST OF MY KNOWLEDGE AND BELIEF.

PROFESSIONAL LAND SURVEYOR

DATE 3-1-18

- TIE SKETCH -

NOTE: THE CORNER FALLS 2± NORTH OF THE CENTERLINE OF AKRON DR.



- 3/4" x 18" IRON REBAR SET, 1.50#/FT
- 3/4" IRON ROD FOUND
- ⊙ HARRISON (BROKEN-TOP) FOUND
- ⊣ VINYL "T" POST

ADAMS COUNTY

Survey Monument Record

TYPE OF MONUMENT: Harrison

STATE PLANE COORDINATES: N _____

E _____

ELEVATION — M.S.L. DATUM: _____

THETA ANGLE: _____

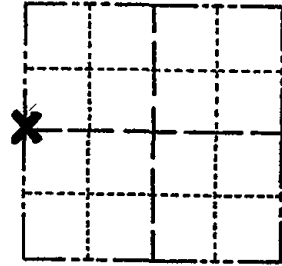
FIELD BOOK: 54 PAGE 1

CORNER NO. 14

SECTION 6

TOWN 20

RANGE 6



LOCATION
(Indicated by 'X')

SEAL:



BASIS FOR MONUMENT LOCATION

(Use reverse side if necessary)

Show info such as: History of corner, with reference to Vol. and pg, dates, surveyor; exact description of monument replaced; if location computed, by taped or EDM traverse; landowner remarks, etc.

Excavated with backhoe. Found nothing. No resurveys of record. Corner set on a straight line between section corners, but not proportional. Could not match possession lines by 30'±. Therefore took possession lines into consideration in setting the north-south location of this corner.

Ok 5-7-84 DK-SS

2 NEW TIES 6-12-89 MK-SS
OK 2-11-94 CR-SS

OK 3-23-79 RN-DW
OK 1-21-99 JG-DR
1-GONE, 4-LEFT, 2-25-04-JG

CERTIFIED CORRECT:

Anthony B. Kiedrowski
Registered Land Surveyor
DATE: 7/5/77

TIE SKETCH

(Show at least four ties)

FD HAR-TSP BROKEN - 14"
DEEP - USED MAG NAILS
1' TIE NE FAW - SET
RR SPIKE, LEFT MAG
NAILS IN PLACE
3 NEW TIES 07-10-09 SS
VERIFIED NORTH-SOUTH PER
KEL SUMMARY DATED 6-17-81

