

05
SECTION

20
TOWN

06
RANGE

ADAMS COUNTY

COUNTY CORNER NO.: 16

ROMPORTOL ID: 42006052000

PUBLIC LAND SURVEY MONUMENT RECORD

TYPE OF MONUMENT: HARRISON (BROKEN-TOP)
ADAMS COUNTY COORDINATES, NAD 83 (2007)

N. 316660.061

E. 535861.562

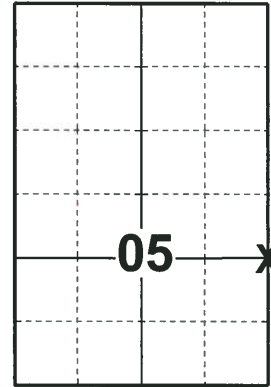
ELEVATION- - - - - DATUM - - - - -

FIELD WORK DATE: 05/02/2018

BASIS FOR MONUMENT LOCATION

1974 - PLS 878 EXCAVATED WITH A BACKHOE AND FOUND A 3"x12"x?" POINTED SANDSTONE, 5' BELOW THE SURFACE. LEFT THE SANDSTONE IN PLACE AND SET A HARRISON ON TOP OF IT AND TIED OUT CORNER.

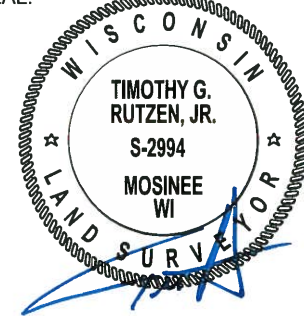
2018 - PLS 2994 FOUND A HARRISON MONUMENT WITH A BROKEN-TOP 36" BELOW THE ROAD SURFACE. FOUND NO EVIDENCE OF ANY OF THE WITNESSES. ACCEPTED THE HARRISON MONUMENT WITH A BROKEN-TOP AS THE BEST EVIDENCE OF THE CORNER LOCATION. SET 4 NEW TIES AND MEASURED TO THE TIES.



LOCATION

(INDICATE CORNER BY "X")

SEAL:



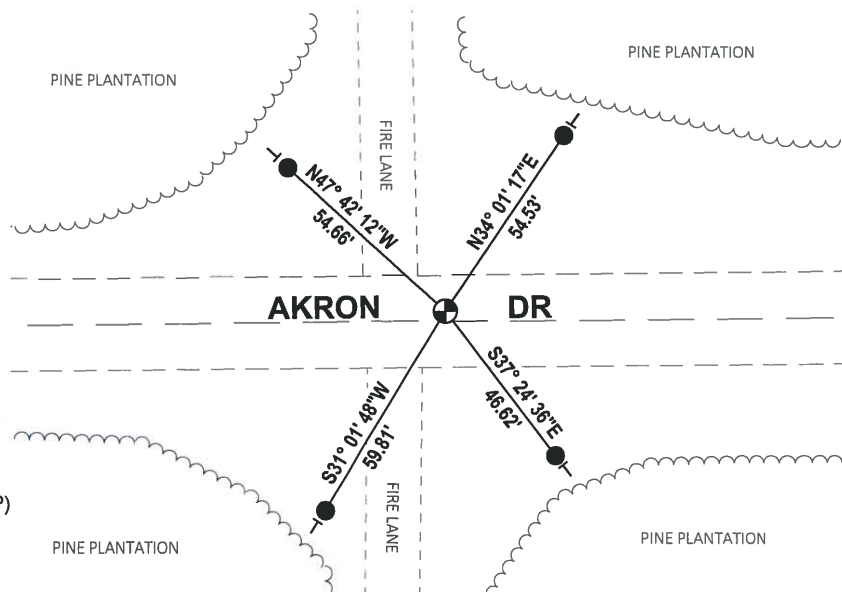
DATA SHOWN HERE ON THIS TIE SHEET IS CORRECT AND COMPLETE TO THE BEST OF MY KNOWLEDGE AND BELIEF.

PROFESSIONAL LAND SURVEYOR

DATE 7-18-18

TIE SKETCH

NOTE: THE CORNER FALLS 3 1/2' NORTH OF THE CENTERLINE OF AKRON DR.



- SET 3/4" x 18" IRON REBAR, 1.50#/FT
- ⊕ FOUND HARRISON MONUMENT (BROKEN-TOP)
- └ VINYL "T" POST

ADAMS COUNTY

Survey Monument Record

TYPE OF MONUMENT: Harrison Standard

STATE PLANE COORDINATES: N _____

E _____

ELEVATION — M.S.L. DATUM: _____

THETA ANGLE: _____

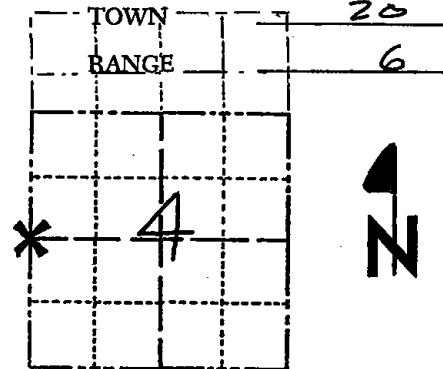
FIELD BOOK: 30 PAGE 1A

CORNER NO. 580 ¹⁶

SECTION 4

TOWN 20

RANGE 6



LOCATION
(Indicated by 'X')

SEAL:



BASIS FOR MONUMENT LOCATION

(Use reverse side if necessary)

Show info such as: History of corner, with reference to Vol. and pg, dates, surveyor; exact description of monument replaced; if location computed, by taped or EDM traverse; landowner remarks, etc.

Excavated with backhoe, found 3"x12"x?" pointed sandstone five feet down. Left in place and set Harrison on top.

See reverse side for the updated map 5-7-84
OK 8-15-79 RN-RAK

CERTIFIED CORRECT:

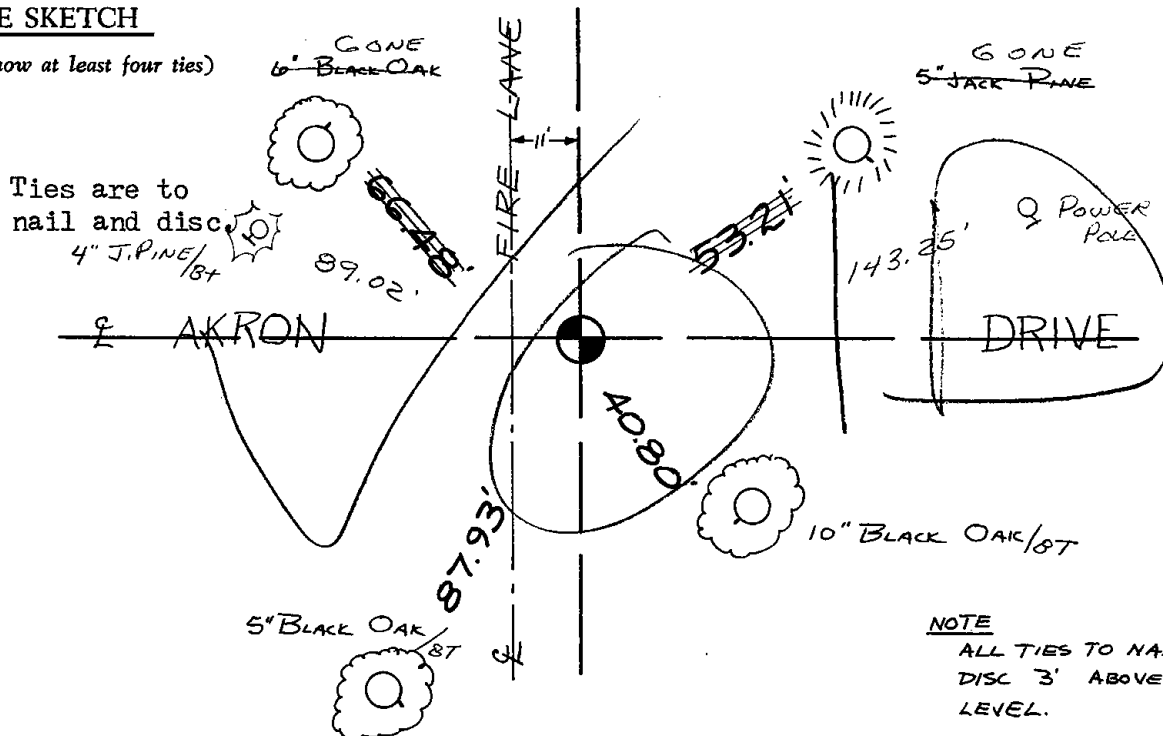
Anthony B. Kiedrowski

Registered Land Surveyor
10/21/74

DATE: _____

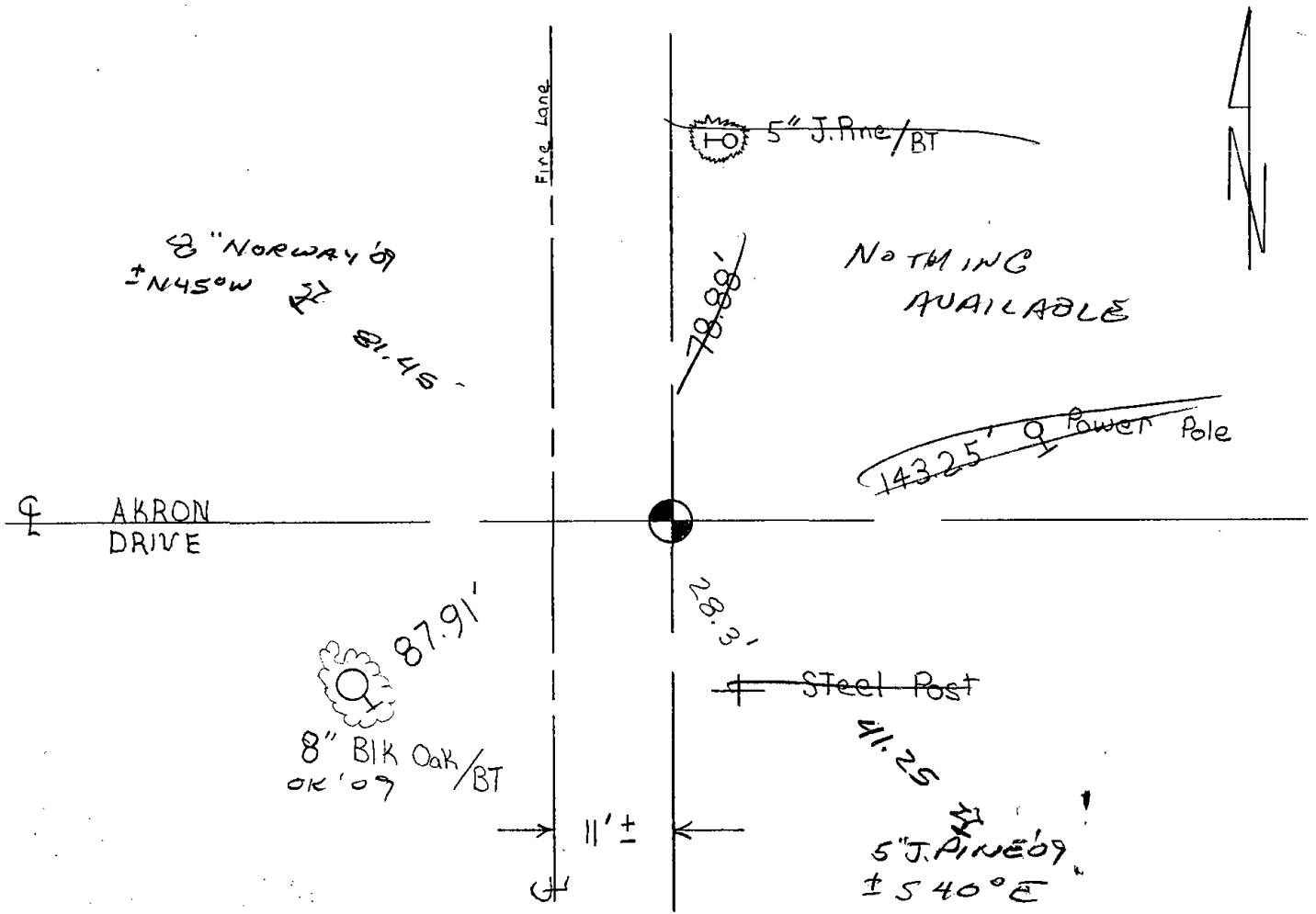
TIE SKETCH

(Show at least four ties)



NOTE

ALL TIES TO NAIL IN DISC 3' ABOVE GROUND LEVEL.



New ties were set on 5-7-84 DK-SS

- OK 2-23-89 SS
 - OK 3-7-94 JG-GR
 - OK 1-21-99 JG-DR
 - 07-07-09 FD MAG - ± 3' N. of E - I MATCH BT SW.
- MADE 2 NEW TIES