

## PUBLIC LAND SURVEY MONUMENT RECORD

TYPE OF MONUMENT: HARRISON  
 ADAMS COUNTY COORDINATES, NAD 83 (2007)

N. 319302.814

E. 535844.484

ELEVATION- - - - - DATUM - - - - -

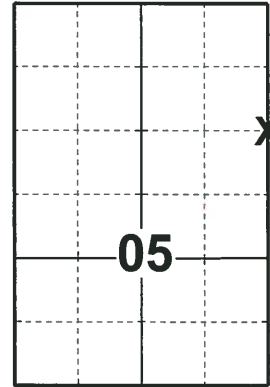
FIELD WORK DATE: 05/02/2018

### BASIS FOR MONUMENT LOCATION

1977 - PLS 878 EXCAVATED WITH A BACKHOE AND FOUND A SANDSTONE. THE SANDSTONE IS BELIEVED TO BE SET BY M.C. SMITH IN A RESURVEY OF PART OF SECTION 4. LOWERED THE SANDSTONE AND SET A HARRISON MONUMENT ON TOP AND TIED OUT CORNER. VERIFIED THE LOCATION BY EDM/T-2 TRAVERSE.

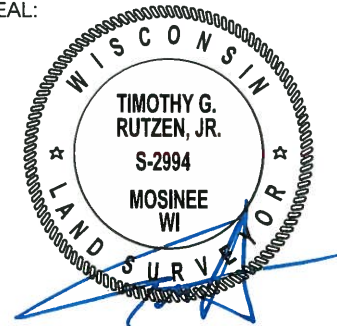
1984 - PLS 878 FOUND STONE WHEN DOING THE SURVEY FOR EVELYN SALINGER. SET 2 NEW TIES.

2018 - PLS 2994 FOUND A HARRISON MONUMENT 2" ABOVE THE GROUND SURFACE. FOUND NO EVIDENCE OF ANY OF THE WITNESSES. ACCEPTED THE HARRISON MONUMENT AS THE BEST EVIDENCE OF THE CORNER LOCATION. SET 4 NEW TIES AND MEASURED TO THE TIES.



**LOCATION**  
 (INDICATE CORNER BY "X")

SEAL:



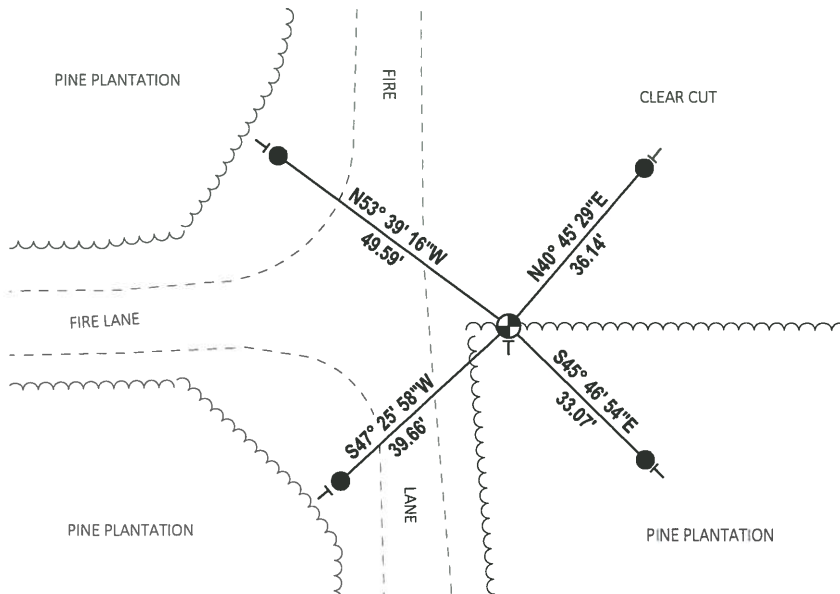
DATA SHOWN HERE ON THIS TIE SHEET IS CORRECT AND COMPLETE TO THE BEST OF MY KNOWLEDGE AND BELIEF.

PROFESSIONAL LAND SURVEYOR

DATE 7-18-18

### TIE SKETCH

NOTE: THE CORNER FALLS 18± EAST OF THE CENTERLINE OF THE FIRE LANE.



- SET 3/4" x 18" IRON REBAR, 1.50#/FT
- ⊕ FOUND HARRISON MONUMENT
- VINYL "T" POST