

03  
SECTION

20  
TOWN

06  
RANGE

# ADAMS COUNTY

COUNTY CORNER NO: 18

ROMPORTOL ID: 42006032000

## PUBLIC LAND SURVEY MONUMENT RECORD

TYPE OF MONUMENT: HARRISON (BROKEN-TOP)  
ADAMS COUNTY COORDINATES, NAD 83 (2007)

N. 316825.108

E. 546426.136

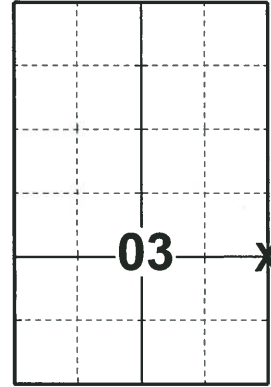
ELEVATION- \_\_\_\_\_ DATUM \_\_\_\_\_

FIELD WORK DATE: 05/01/2018

### BASIS FOR MONUMENT LOCATION

1981 - PLS 878 EXCAVATED WITH A BACKHOE AND FOUND NO EVIDENCE OF THE CORNER LOCATION. CALCULATED THE CORNER ON A STRAIGHT LINE BETWEEN A STONE FOUND AT THE W 160 ACRE CORNER A HALF MILE NORTH OF THIS LOCATION THE SW CORNER OF SECTION 2, AND HALF WAY BETWEEN.

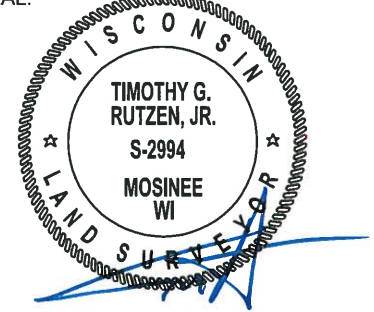
2018 - PLS 2994 FOUND A HARRISON MONUMENT WITH A BROKEN-TOP 12" BELOW THE ROAD SURFACE, 1 TIE AND 1 WITNESS. THE MONUMENT AGREES WITH THE EXISTING TIE AND WITNESS. ACCEPTED THE HARRISON MONUMENT WITH A BROKEN-TOP AS THE CORNER LOCATION. SET 3 NEW TIES AND MEASURED TO THE TIES AND WITNESS.



LOCATION

(INDICATE CORNER BY "X")

SEAL:



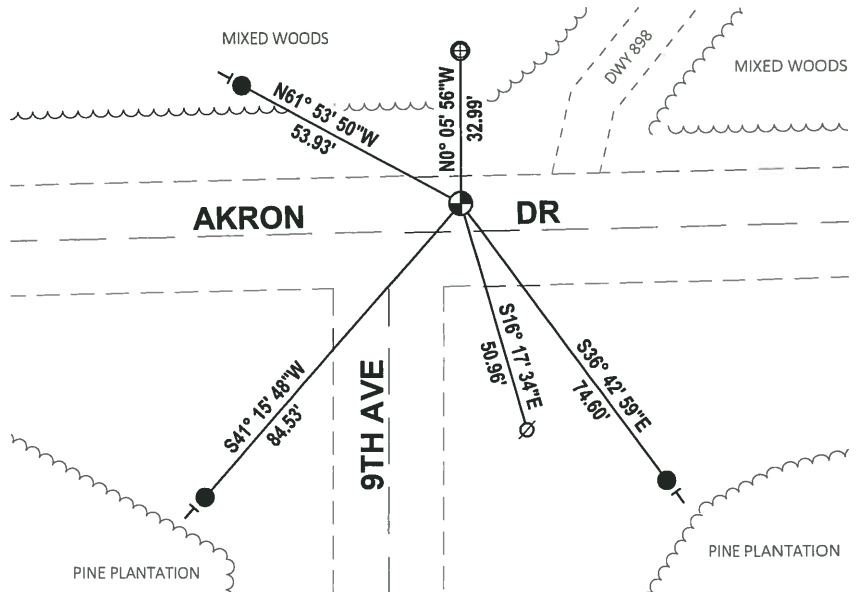
DATA SHOWN HERE ON THIS TIE SHEET IS CORRECT AND COMPLETE TO THE BEST OF MY KNOWLEDGE AND BELIEF.

PROFESSIONAL LAND SURVEYOR

DATE 7-18-18

### TIE SKETCH

NOTE: THE CORNER FALLS 6'± NORTH OF THE CENTERLINE OF AKRON DR AND 16'± EAST OF THE CENTERLINE OF 9TH AVE.

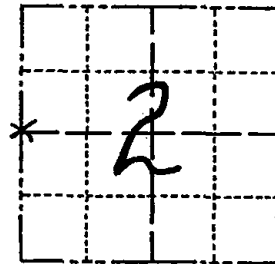


- SET 3/4" x 18" IRON REBAR, 1.50#/FT
- ⊕ FOUND 1" O.D. IRON PIPE
- ⊕ FOUND HARRISON MONUMENT (BROKEN-TOP)
- ∅ WITNESS POWER POLE
- VINYL "T" POST

# Government Land Corner Certificate

ADAMS County  
 TYPE OF MONUMENT: HARRISON  
 STATE PLANE COORDINATES: N \_\_\_\_\_  
 E \_\_\_\_\_  
 ELEVATION — M.S.L. DATUM: \_\_\_\_\_  
 THETA ANGLE: \_\_\_\_\_  
 FIELD BOOK: 69 PAGE 122  
 DRAWN BY: L. COOMBS

CORNER NO. 18  
 SECTION 2  
 TOWN 20  
 RANGE 6



LOCATION  
(Indicated by 'X')

SEAL:



DATA SHOWN HERE ON  
CERTIFIED CORRECT:

*Anthony B. Kiedrowski*  
Registered Land Surveyor

DATE: 8/4/81

## BASIS FOR MONUMENT LOCATION

Show info such as: History of corner, with reference to Vol. and pg., dates, surveyor; exact description of monument replaced; if location computed, by taped or EDM traverse; landowner remarks, etc. (Use reverse side if necessary)

Excavated with backhoe twice, area explored was 10 x 16'. Found nothing. This corner is set on a straight line between a stone found at the W 160 acre corner half mile north of here and the SW corner of the section, and half way between.

- 1 new 4-19-84 DJK
- OK 2-23-89 SS
- OK 3-7-94 GR-JG
- 2-GONE, 3-NEW, 2-16-99 JG-SS
- OK, 2-24-04-JG
- OK 07-09-09 SS 4 TIES REMAIN-FO MAG

## TIE SKETCH

Show at least four ties, also fence lines, roads, topo, size and type of witness trees and if off road - best way to arrive at corner.

