

02
SECTION

20
TOWN

06
RANGE

ADAMS COUNTY

COUNTY CORNER NO: 19

ROMPORTOL ID: 42006022000

PUBLIC LAND SURVEY MONUMENT RECORD

TYPE OF MONUMENT: HARRISON (BROKEN-TOP)
ADAMS COUNTY COORDINATES, NAD 83 (2007)

N. 316852.436

E. 551706.310

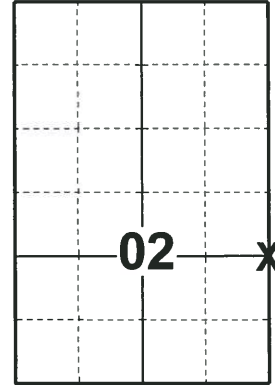
ELEVATION- _____ DATUM _____

FIELD WORK DATE: 04/30/2018

BASIS FOR MONUMENT LOCATION

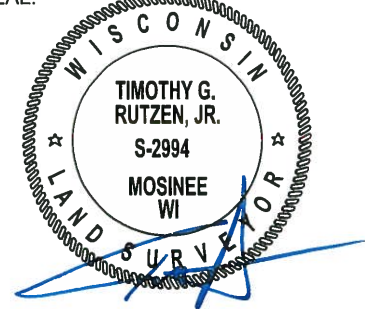
1981 - PLS 878 NO RECORD OF ANY RESURVEYS. EXCAVATED WITH A BACKHOE AND FOUND DEFINITE ROTTED REMAINS OF A 3" DIAMETER WOOD POST. VERIFIED THE LOCATION BY EDM T-2 TRAVERSE. REPLACED THE POST WITH A HARRISON AND TIED OUT CORNER.

2018 - PLS 2994 FOUND A HARRISON MONUMENT WITH A BROKEN-TOP 18" BELOW THE ROAD SURFACE. FOUND NO EVIDENCE OF ANY OF THE WITNESSES. ACCEPTED THE HARRISON MONUMENT WITH A BROKEN-TOP AS THE BEST EVIDENCE OF THE CORNER LOCATION. SET 4 NEW TIE AND MEASURED TO THE TIES.



LOCATION
(INDICATE CORNER BY "X")

SEAL:



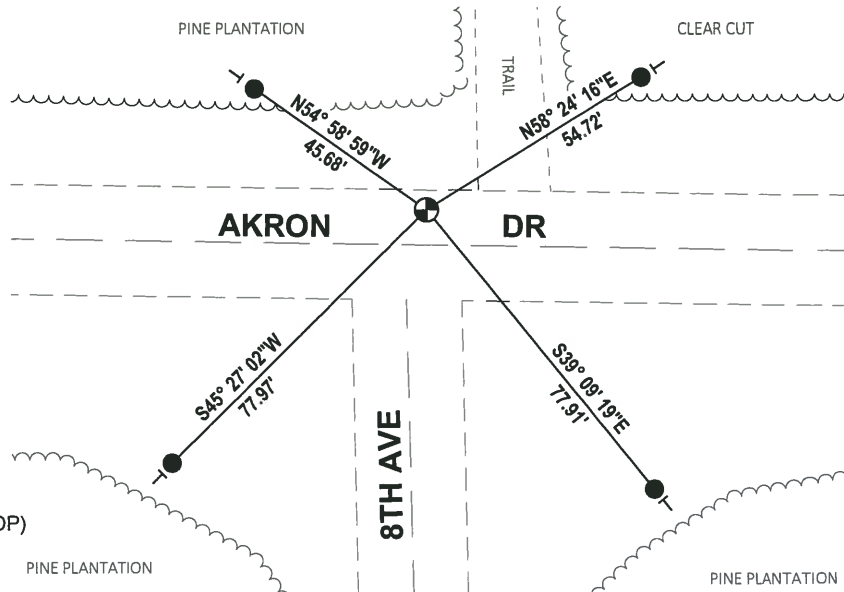
DATA SHOWN HERE ON THIS TIE SHEET IS CORRECT AND COMPLETE TO THE BEST OF MY KNOWLEDGE AND BELIEF.

PROFESSIONAL LAND SURVEYOR

DATE 7-18-18

- TIE SKETCH -

NOTE: THE CORNER FALLS 8± NORTH OF THE CENTERLINE OF AKRON DR AND 5± EAST OF THE CENTERLINE OF 8TH AVE.

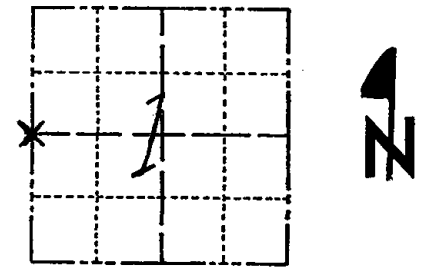


- SET 3/4" x 18" IRON REBAR, 1.50#/FT
- ⊕ FOUND HARRISON MONUMENT (BROKEN-TOP)
- ┆ VINYL "T" POST

Government Land Corner Certificate

ADAMS County
 TYPE OF MONUMENT: HARRISON
 STATE PLANE COORDINATES: N _____
 E _____
 ELEVATION — M.S.L. DATUM: _____
 THETA ANGLE: _____
 FIELD BOOK: 86 (102) PAGE 83 (98)
 DRAWN BY: N.J.

CORNER NO. 19
 SECTION 1
 TOWN 20
 RANGE 6



LOCATION
(Indicated by 'X')

BASIS FOR MONUMENT LOCATION

Show info such as: History of corner, with reference to Vol. and pg., dates, surveyor; exact description of monument replaced; if location computed, by taped or EDM traverse; landowner remarks, etc. (Use reverse side if necessary)

No record of any resurveys. Excavated with backhoe and found definite rotted remains of 3" dia wood post. Verified location by EDM T-2 traverse. Replaced post with Harrison.

- Ok 4-19-84 DJK
- OK 2-23-89 SS
- OK 3-7-94 JG-GR
- 4-GONE, 4-NEW, TOP BROKEN OFF, 12" BELOW SURFACE
- 2-16-99 - JG-SS
- OK, 2-24-04 - JG
- 1-7-10 SS OK

SEAL:



DATA SHOWN HERE ON
CERTIFIED CORRECT:

Anthony B. Kiedrowski
Registered Land Surveyor

DATE: 1/5/81

TIE SKETCH

Show at least four ties, also fence lines, roads, topo, size and type of witness trees and if off road - best way to arrive at corner.

