

PUBLIC LAND SURVEY MONUMENT RECORD

TYPE OF MONUMENT: HARRISON
 ADAMS COUNTY COORDINATES, NAD 83 (2007)

N. 313954.910

E. 527950.725

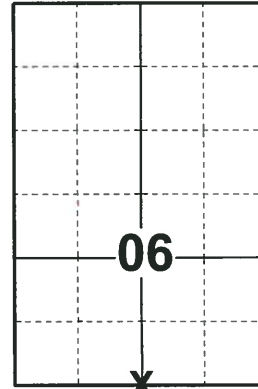
ELEVATION- DATUM

FIELD WORK DATE: 05/02/2018

BASIS FOR MONUMENT LOCATION

1976 - NO RECORD OF ANY PRIOR SURVEYS. CALCULATED POSITION, STRAIGHT LINE AND MIDWAY BETWEEN FOUND MONUMENTS AT THE SW AND SE ESTABLISHED CORNERS OF SECTION 6. SET A HARRISON MONUMENT AT THE CORNER AND TIED OUT.

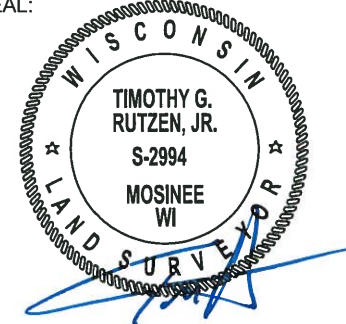
2018 - PLS 2994 FOUND A HARRISON MONUMENT FLUSH WITH THE GROUND SURFACE AT THE FENCE INTERSECTION. FOUND NO EVIDENCE OF ANY OF THE WITNESSES. ACCEPTED THE HARRISON MONUMENT AS THE BEST EVIDENCE OF THE CORNER LOCATION. SET 4 NEW TIES AND MEASURED TO THE TIES.



LOCATION

(INDICATE CORNER BY "X")

SEAL:



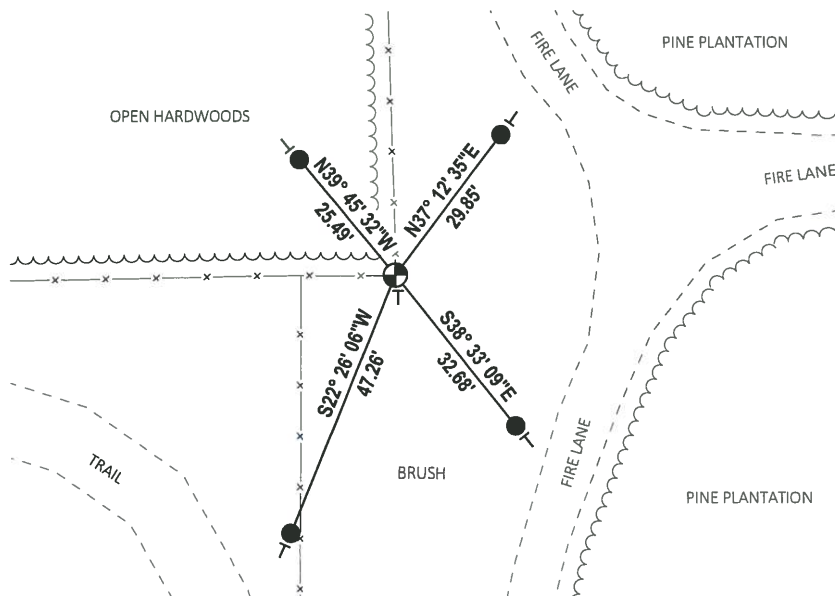
DATA SHOWN HERE ON THIS TIE SHEET IS CORRECT AND COMPLETE TO THE BEST OF MY KNOWLEDGE AND BELIEF.

PROFESSIONAL LAND SURVEYOR

DATE 7-18-18

TIE SKETCH

NOTE: THE CORNER IS LOCATED AT THE FENCE CORNER.



- SET 3/4" x 18" IRON REBAR, 1.50#/FT
- ⊕ FOUND HARRISON MONUMENT
- VINYL "T" POST

ADAMS COUNTY

Survey Monument Record

CORNER NO. 1004
 SECTION 7
 TOWN 20 N
 RANGE 6 E

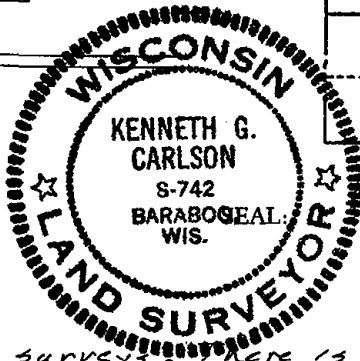
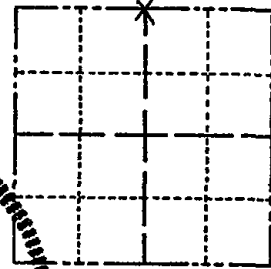
TYPE OF MONUMENT: Harrison

STATE PLANE COORDINATES: N _____
E _____

ELEVATION — M.S.L. DATUM: _____

THETA ANGLE: _____

FIELD BOOK: _____ PAGE _____



LOCATION Indicated by 'X'

BASIS FOR MONUMENT LOCATION

(Use reverse side if necessary)

Show info such as: History of corner, with reference to Vol. and pg, dates, surveyor; exact description of monument replaced; if location computed, by taped or EDM traverse; landowner remarks, etc.

Could not find any previous surveys. There is a Harrison in the N.E. corner and a 3/4" I.P. in the N.W. corner. T. Kiedrowski, County Surveyor, is going to put in a Harrison where the 3/4" I.P. is located. The N 1/4 corner Harrison was set on a straight line between the two corners and pro-rated from the original gov't survey.

EDM and taped.
 Fence to First Lane
 and to 23/2 C
 by ABX

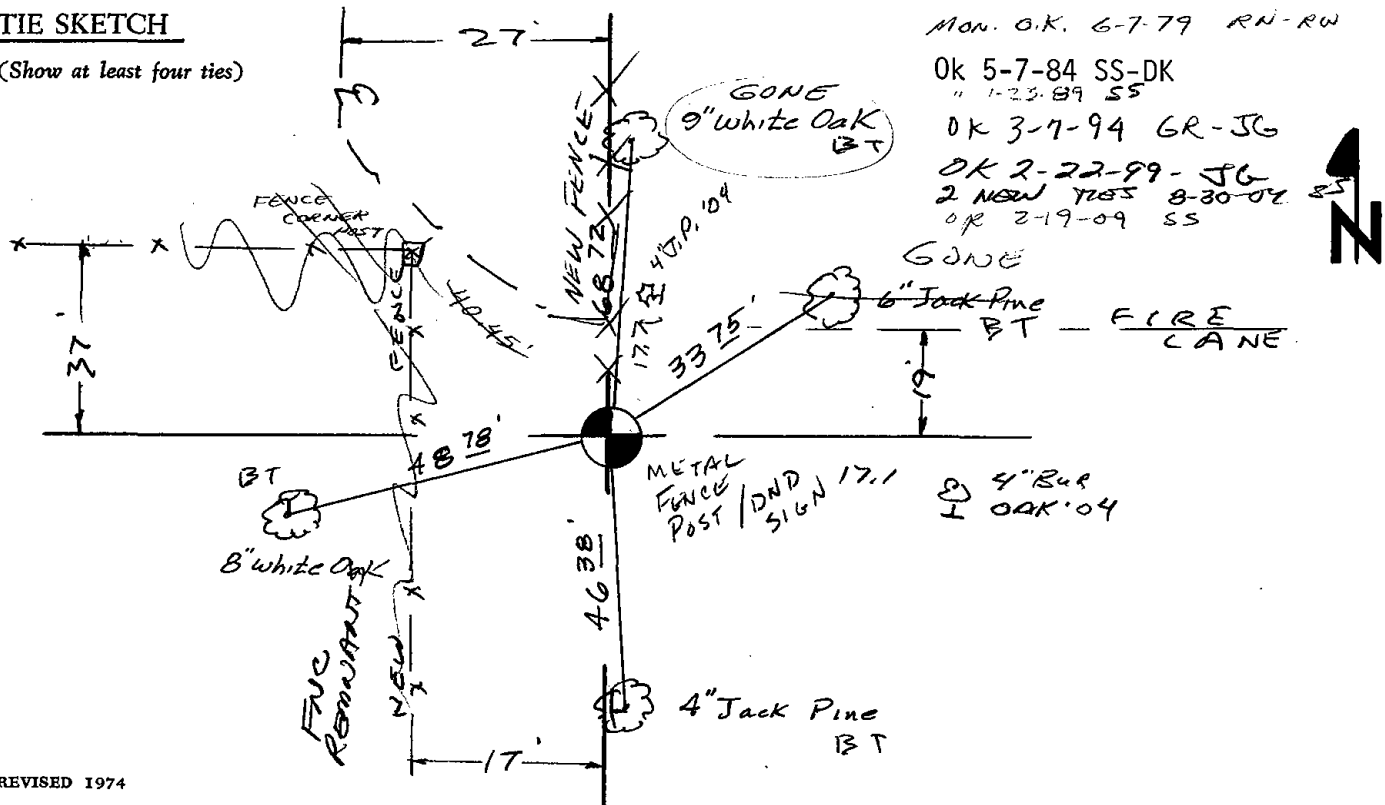
CERTIFIED CORRECT:

Kenneth G. Carlson
 Registered Land Surveyor

DATE: May 10, 1976

THE SKETCH

(Show at least four ties)



- Mon. O.K. 6-7-79 RN-RW
- OK 5-7-84 SS-DK
- " 1-23-89 SS
- OK 3-7-94 GR-JG
- OK 2-22-99-JG
- 2 NEW TIES 8-30-02 SS
- OR 2-19-09 SS

