

PUBLIC LAND SURVEY MONUMENT RECORD

TYPE OF MONUMENT: HARRISON
 ADAMS COUNTY COORDINATES, NAD 83 (2007)

N. 313987.408

E. 530571.144

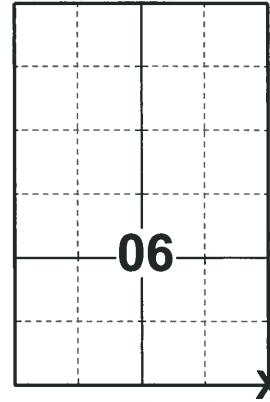
ELEVATION- _____ DATUM _____

FIELD WORK DATE: 05/02/2018

BASIS FOR MONUMENT LOCATION

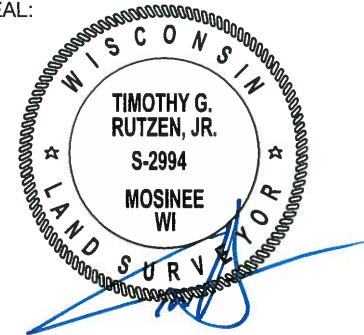
1974 - PLS 841 NO ORIGINAL OR RECORD CORNER EVIDENCE FOUND. CALCULATED CORNER LOCATION BY PROPORTIONAL MEASUREMENT BASED ON EDM TRAVERSE OF SECTION 8. STANDARD 30" C.I. HARRISON MONUMENT SET AT THE CORNER AND TIED OUT.

2018 - PLS 2994 FOUND A HARRISON MONUMENT FLUSH WITH THE GROUND SURFACE AND 1 TIE. THE MONUMENT AGREES WITH THE EXISTING TIE. ACCEPTED THE HARRISON MONUMENT AS THE CORNER LOCATION. SET 3 NEW TIES AND MEASURED TO THE TIES.



LOCATION
 (INDICATE CORNER BY "X")

SEAL:



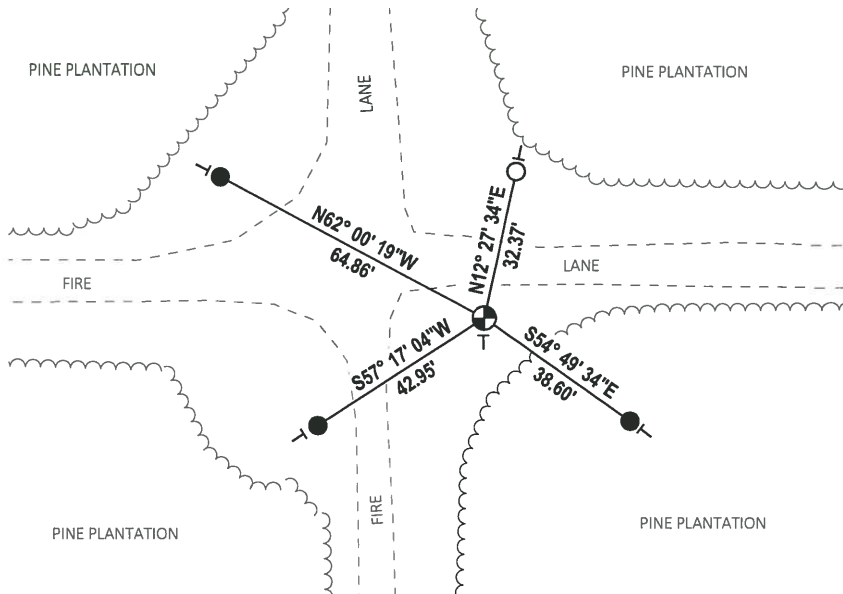
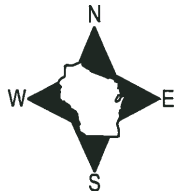
DATA SHOWN HERE ON THIS TIE SHEET IS CORRECT AND COMPLETE TO THE BEST OF MY KNOWLEDGE AND BELIEF.

PROFESSIONAL LAND SURVEYOR

DATE 7-18-18

- TIE SKETCH

NOTE: THE CORNER FALLS 7± SOUTH OF THE EDGE OF THE FIRE LANE.



- SET 3/4" x 18" IRON REBAR, 1.50#/FT
- FOUND 3/4" IRON ROD
- ⊕ FOUND HARRISON MONUMENT
- ⊥ VINYL "T" POST

ADAMS COUNTY

Survey Monument Record

HARRISON STANDARD

TYPE OF MONUMENT: NW SECTION CORNER

STATE PLANE COORDINATES: N _____

E _____

ELEVATION — M.S.L. DATUM: _____

THETA ANGLE: _____

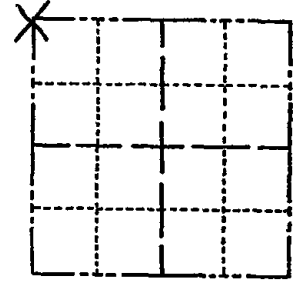
FIELD BOOK: _____ PAGE _____

CORNER NO. 613 ⁽²³⁾

SECTION 8

TOWN 20N.

RANGE 6E.



LOCATION
(Indicated by 'X')

SEAL:



BASIS FOR MONUMENT LOCATION

(Use reverse side if necessary)

Show info such as: History of corner, with reference to Vol. and pg, dates, surveyor; exact description of monument replaced; if location computed, by taped or EDM traverse; landowner remarks, etc.

NO ORIGINAL OR RECORD
CORNER EVIDENCE FOUND.
CORNER SET BY PROPORTIONAL
MEASUREMENT BASED ON
EDM TRAVERSE OF SECTION.
STD 30" C.I. HARRISON
MONUMENT SET @ CORNER.

EXCAVATION BY BACK HOE.
(Found Nothing - ABC)

See reverse side for new map 5-7-84

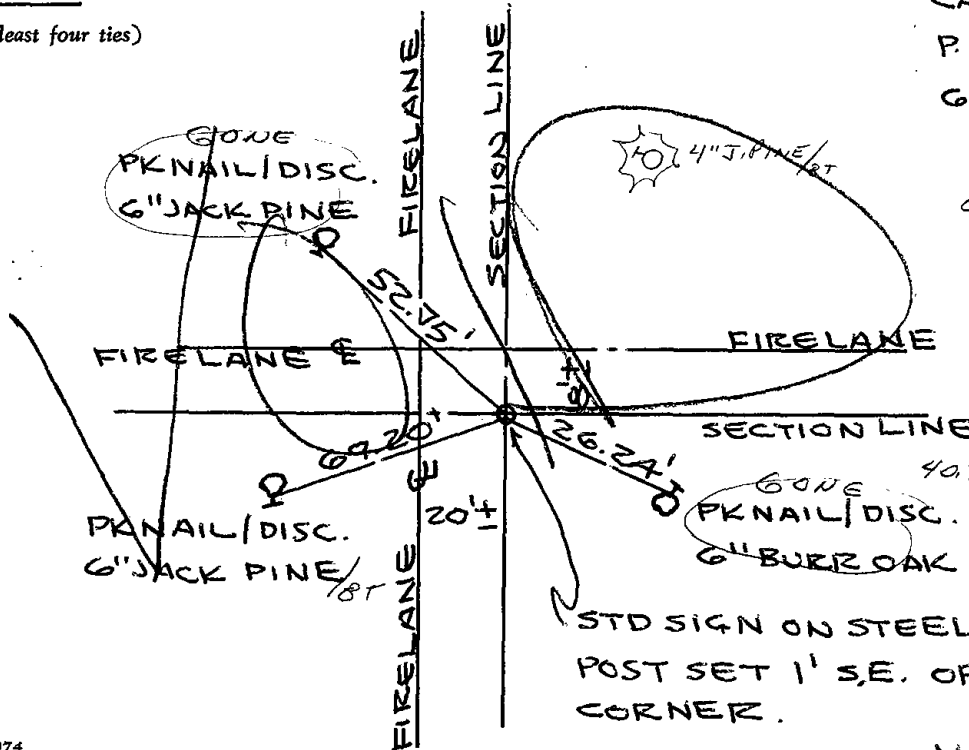
CERTIFIED CORRECT:

William C. Rohde
Registered Land Surveyor

DATE: 10/30/74

TIE SKETCH

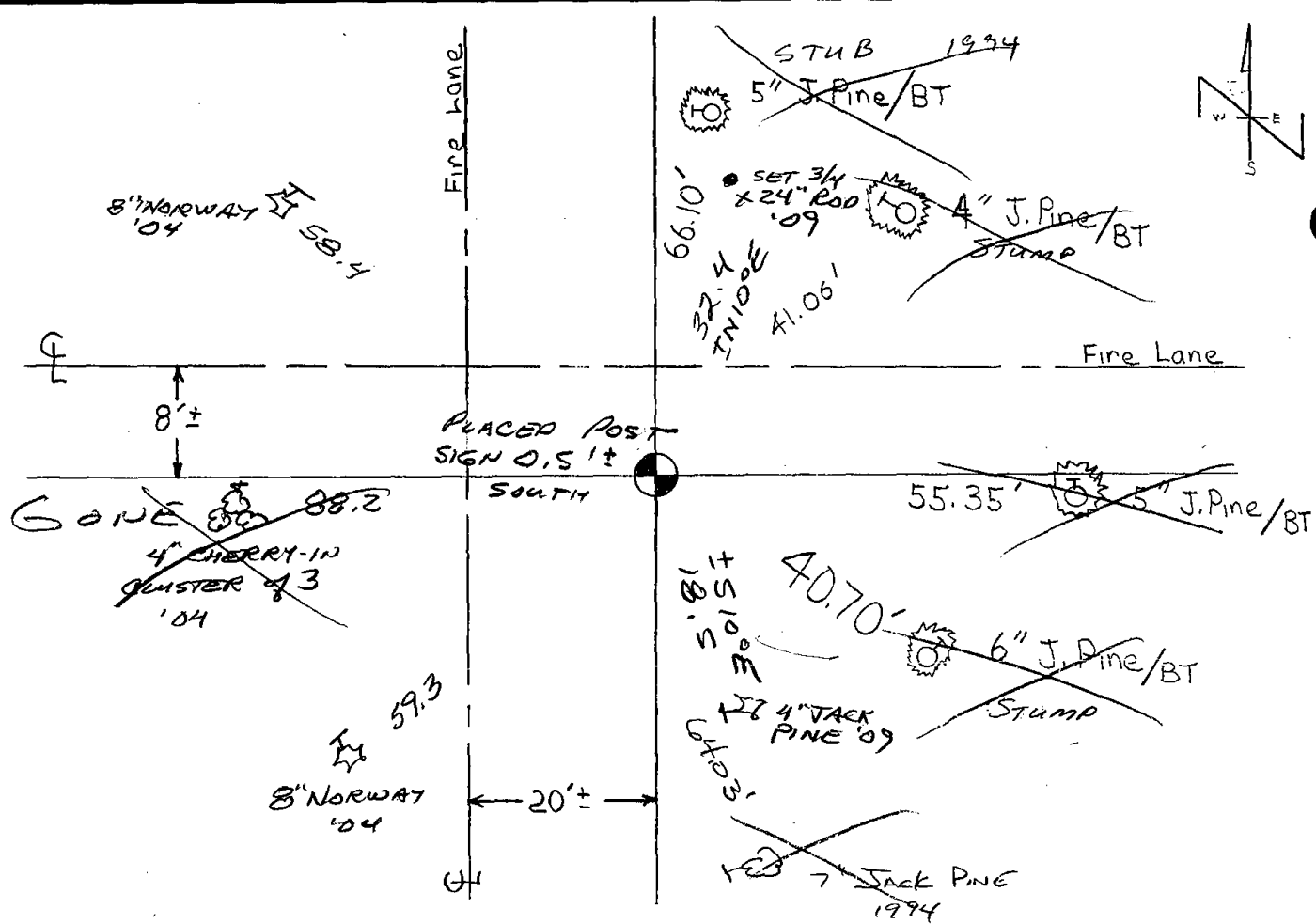
(Show at least four ties)



CALM
P. CLOUDY
65°F.

OK 6-7-79 RN-RW





New ties were set on the 7th of May 1984 SS- DK

OK 1-23-89 SS

OK 3-07-94 GR-SS

TIE

OK 2-22-99 - JG

3 NEW TIES - ALL TO EAST ARE GONE 8-30-04 SS

2 " " 07-10-09 SS