

PUBLIC LAND SURVEY MONUMENT RECORD

TYPE OF MONUMENT: HARRISON (BROKEN-TOP)
 ADAMS COUNTY COORDINATES, NAD 83 (2007)

N. 314014.123

E. 535835.663

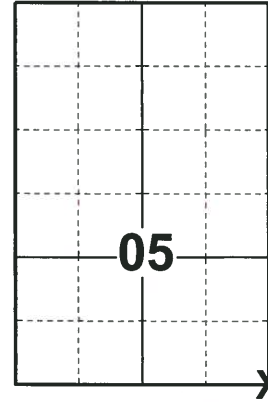
ELEVATION- DATUM

FIELD WORK DATE: 05/02/2018

BASIS FOR MONUMENT LOCATION

1974 - PLS 841 FOUND RECORD STONE MONUMENT AT THE CORNER. REPLACED THE STONE WITH A STANDARD 30" C.I. HARRISON MONUMENT AND TIED OUT.

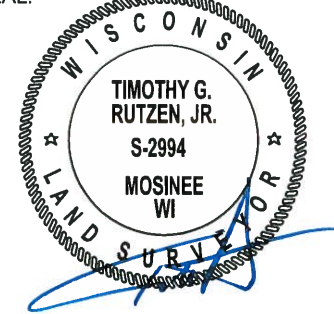
2018 - PLS 2994 FOUND A HARRISON MONUMENT WITH A BROKEN-TOP 8" BELOW THE SURFACE. FOUND NO EVIDENCE OF ANY OF THE WITNESSES. ACCEPTED THE HARRISON MONUMENT WITH A BROKEN-TOP AS THE BEST EVIDENCE OF THE CORNER LOCATION. SET 4 NEW TIES AND MEASURED TO THE TIES.



LOCATION

(INDICATE CORNER BY "X")

SEAL:

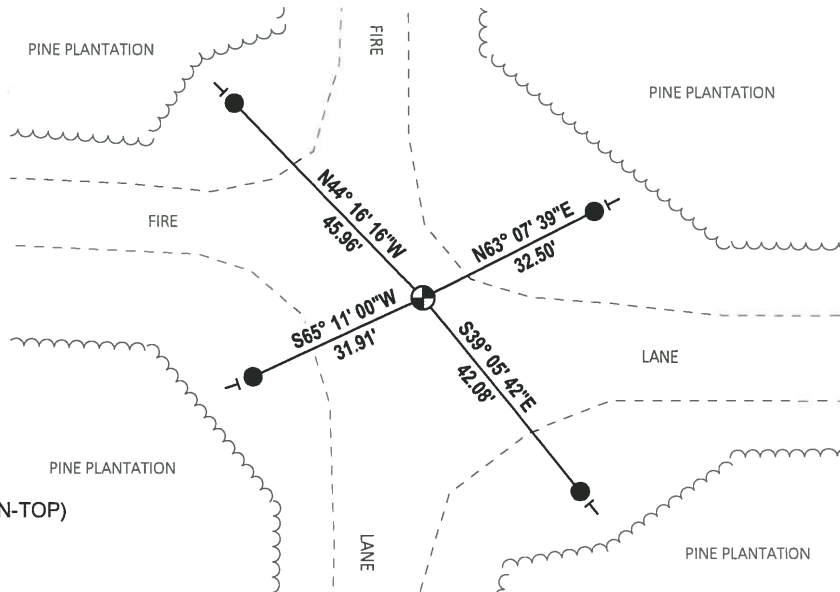


DATA SHOWN HERE ON THIS TIE SHEET IS CORRECT AND COMPLETE TO THE BEST OF MY KNOWLEDGE AND BELIEF.

PROFESSIONAL LAND SURVEYOR

DATE 7-18-18

TIE SKETCH



- SET 3/4" x 18" IRON REBAR, 1.50#/FT
- ⊕ FOUND HARRISON MONUMENT (BROKEN-TOP)
- VINYL "T" POST

ADAMS COUNTY

Survey Monument Record HARRISON STANDARD

TYPE OF MONUMENT: NE SECTION CORNER

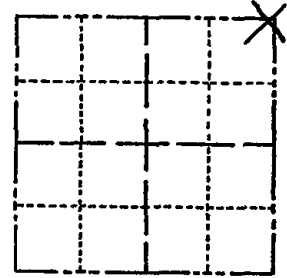
STATE PLANE COORDINATES: N _____ E _____

ELEVATION — M.S.L. DATUM: _____

THETA ANGLE: _____

FIELD BOOK: _____ PAGE _____

CORNER NO. 614 (25)
SECTION 8
TOWN 20 N.
RANGE 6 E.



LOCATION (Indicated by 'X')

SEAL:

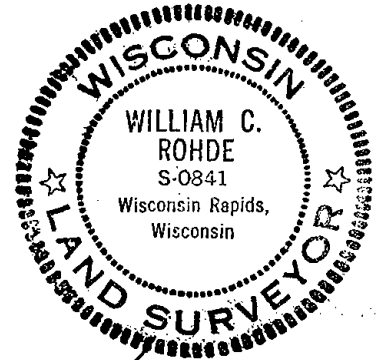
BASIS FOR MONUMENT LOCATION

(Use reverse side if necessary)

Show info such as: History of corner, with reference to Vol. and pg, dates, surveyor; exact description of monument replaced; if location computed, by taped or EDM traverse; landowner remarks, etc.

RECORD STONE MONUMENT
FOUND @ CORNER. REPLACED WITH
STD 30" C.I. HARRISON
MONUMENT SET.

- Ok 5-7-84 SS-DK
- OK 2-23-89 SS
- OK 3-7-94 JG-GR
- OK 2-24-99-JG
- OK 6-30-04 SS
- 3 NEW TIES 07-09-09 SS



CERTIFIED CORRECT:

William C. Rohde
Registered Land Surveyor

DATE: 10/30/74

TIE SKETCH

(Show at least four ties)

CALM
P. CLOUDY
65° F.
DEAD '09

