

PUBLIC LAND SURVEY MONUMENT RECORD

TYPE OF MONUMENT: HARRISON (BROKEN-TOP)
 ADAMS COUNTY COORDINATES, NAD 83 (2007)

N. 311383.085

E. 535863.422

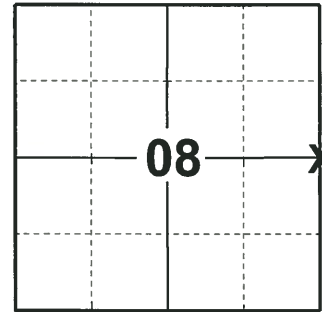
ELEVATION- _____ DATUM _____

FIELD WORK DATE: 05/03/2018

BASIS FOR MONUMENT LOCATION

1974 - PLS 841 FOUND NO ORIGINAL OR RECORD CORNER EVIDENCE. CALCULATED THE CORNER POSITION BY PROPORTIONAL MEASUREMENT. SET A STANDARD 30" C.I. HARRISON MONUMENT AT THE CORNER AND TIED OUT.

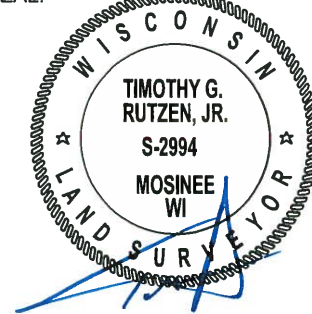
2018 - PLS 2994 FOUND A HARRISON MONUMENT WITH A BROKEN-TOP 18" BELOW THE ROAD SURFACE AND 1 TIE. THE MONUMENT AGREES WITH THE EXISTING TIE. VERIFIED CORNER LOCATION TO BE ONLINE AND EQUIDISTANT BETWEEN THE NE AND SE CORNERS OF SECTION 08 AND ASSUME TIE HAS BEEN DISTURBED. ACCEPTED THE HARRISON MONUMENT WITH A BROKEN-TOP AS THE CORNER LOCATION. SET 3 NEW TIES AND MEASURED TO THE TIES AND WITNESSES.



LOCATION

(INDICATE CORNER BY "X")

SEAL:



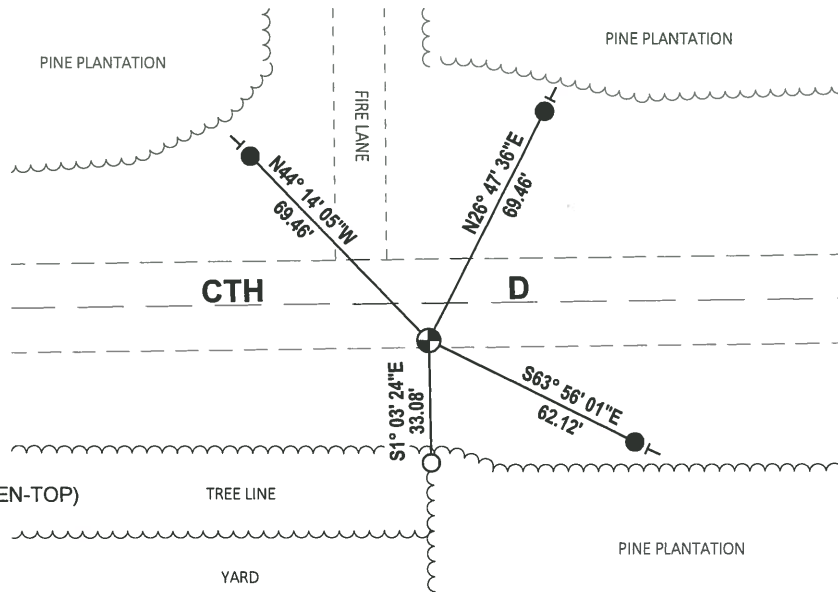
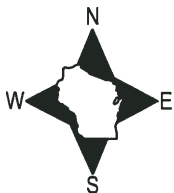
DATA SHOWN HERE ON THIS TIE SHEET IS CORRECT AND COMPLETE TO THE BEST OF MY KNOWLEDGE AND BELIEF.

PROFESSIONAL LAND SURVEYOR

DATE 7-18-18

TIE SKETCH

NOTE: THE CORNER FALLS 10'± SOUTH OF THE CENTERLINE OF CTH D.



- SET 3/4" x 18" IRON REBAR, 1.50#/FT
- FOUND 3/4" IRON ROD
- ⊕ FOUND HARRISON MONUMENT (BROKEN-TOP)
- VINYL "T" POST

ADAMS COUNTY

Survey Monument Record HARRISON STANDARD

TYPE OF MONUMENT: EAST 1/4 CORNER

STATE PLANE COORDINATES: N _____ E _____

ELEVATION - M.S.L. DATUM: _____

THETA ANGLE: _____

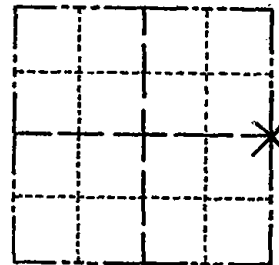
FIELD BOOK: _____ PAGE _____

CORNER NO. 615 (36)

SECTION 8

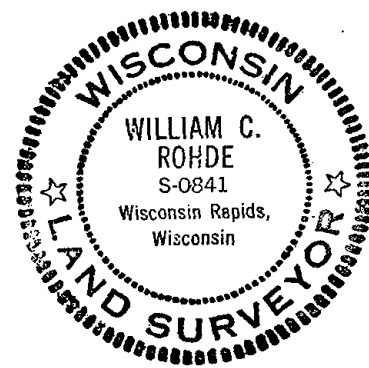
TOWN 20N.

RANGE 6E.



LOCATION (Indicated by 'X')

SEAL:



BASIS FOR MONUMENT LOCATION

(Use reverse side if necessary)

Show info such as: History of corner, with reference to Vol. and pg, dates, surveyor; exact description of monument replaced; if location computed, by taped or EDM traverse; landowner remarks, etc.

NO ORIGINAL OR RECORD CORNER EVIDENCE FOUND AT CORNER. CORNER SET BY PROPORTIONAL MEASUREMENT BASED ON EDM TRAVERSE OF SECTION. STD 30" C.I. HARRISON MONUMENT SET @ CORNER.

CERTIFIED CORRECT:

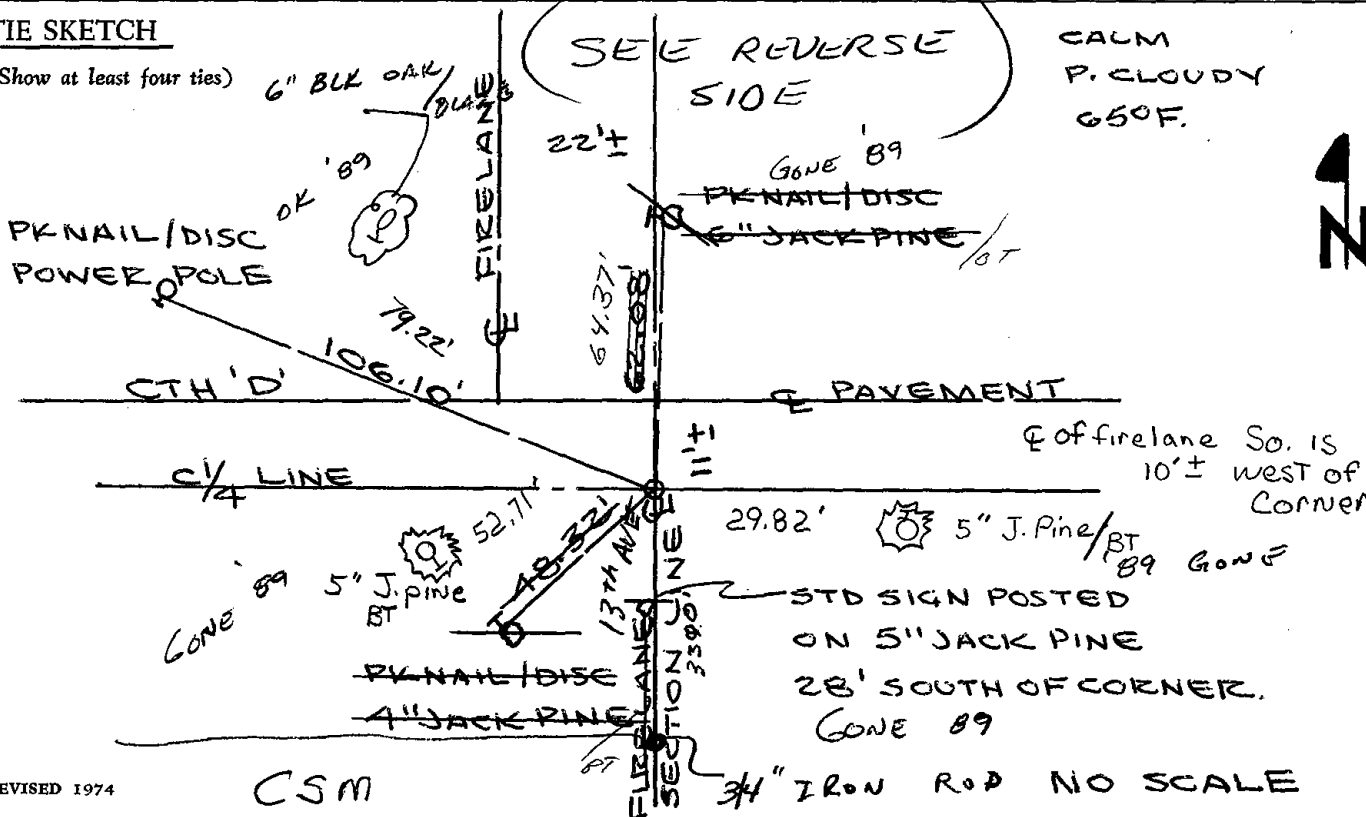
William C. Rohde
Registered Land Surveyor

DATE: 10/30/74

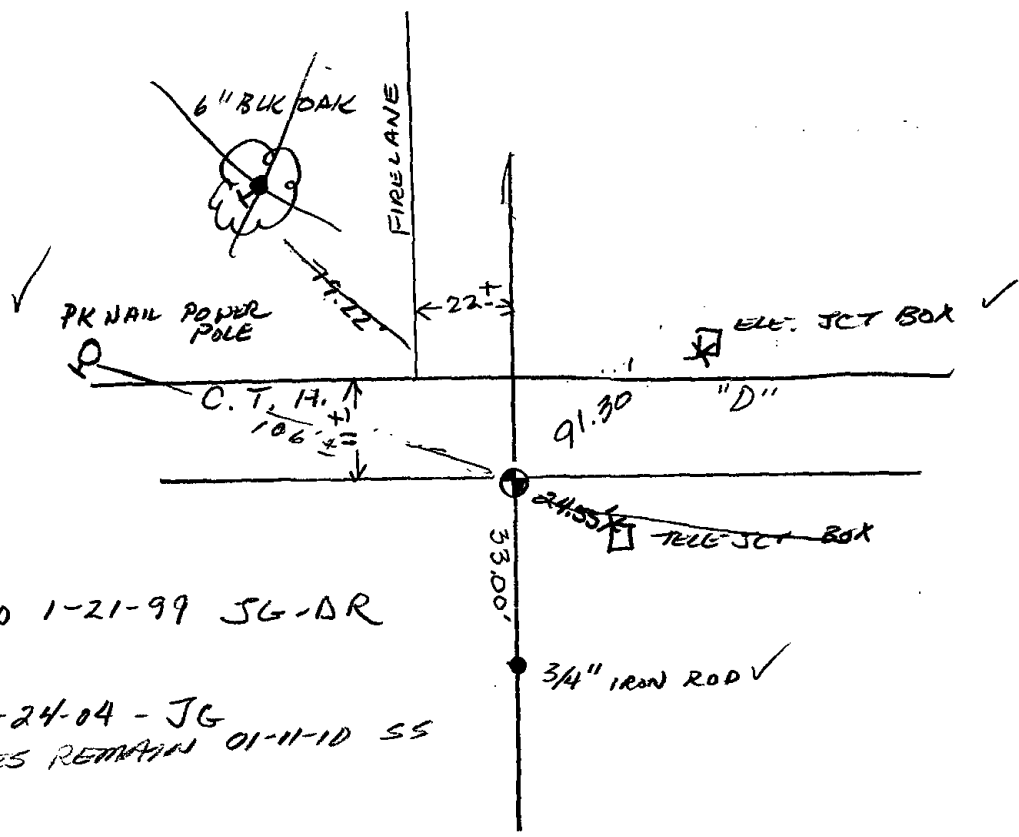
OK 6-7-79 RN-RW
Two new 5-11-84 SS-DK
OK 3-7-94 JG-GR

TIE SKETCH

(Show at least four ties)



CSM



RETIED 1-21-99 JG-DR
 OK, 2-24-04 - JG
 3 TIES REMAIN 01-11-10 SS