

PUBLIC LAND SURVEY MONUMENT RECORD

TYPE OF MONUMENT: HARRISON
 ADAMS COUNTY COORDINATES, NAD 83 (2007)

N. 308798.723

E. 541189.178

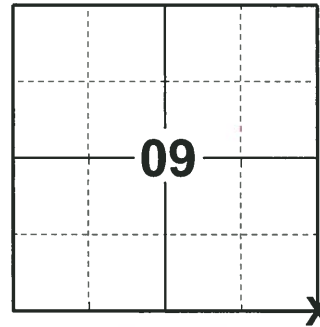
ELEVATION- - - - - DATUM - - - - -

FIELD WORK DATE: 05/07/2018

BASIS FOR MONUMENT LOCATION

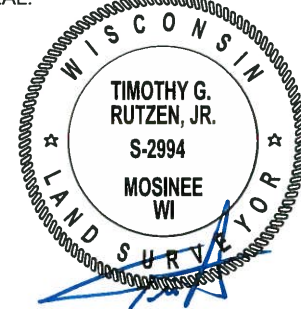
1981 - PLS 1167 FOUND NO EVIDENCE OF THE ORIGINAL MONUMENT OR ANY REMONUMENTATION. CALCULATED CORNER LOCATION PER INFORMATION FROM RLS 699 AND INFORMATION ON INVERNESS ADD. TO LAKE CAMELOT SUBDIVISION. SET HARRISON AND TIED OUT.

2018 - PLS 2994 FOUND A HARRISON MONUMENT 6" BELOW THE GROUND SURFACE AND 2 PROPERTY IRONS. FOUND NO EVIDENCE OF ANY OF THE WITNESSES. ACCEPTED THE HARRISON MONUMENT AS THE BEST EVIDENCE OF THE CORNER LOCATION. SET 2 NEW TIES AND MEASURED TO THE TIES.



LOCATION
 (INDICATE CORNER BY "X")

SEAL:



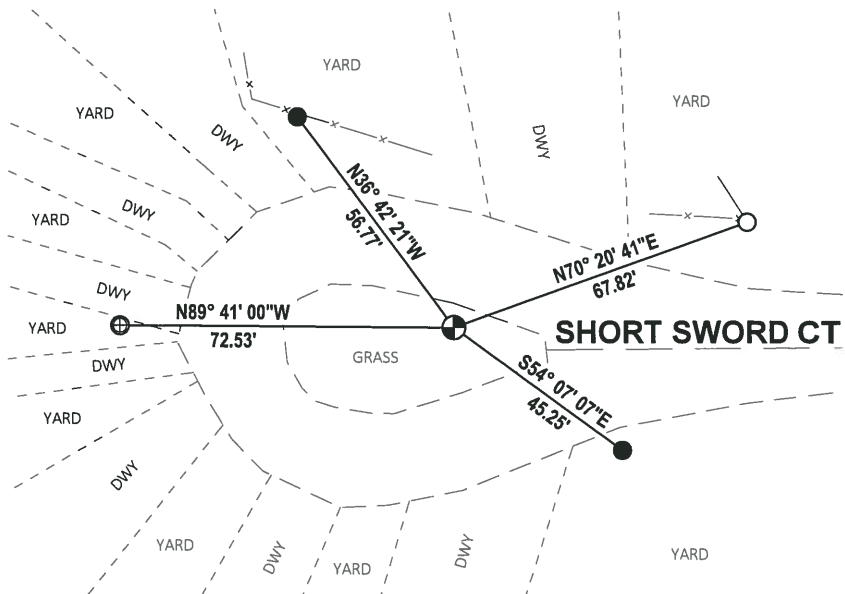
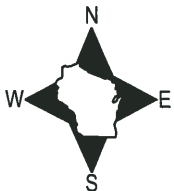
DATA SHOWN HERE ON THIS TIE SHEET IS CORRECT AND COMPLETE TO THE BEST OF MY KNOWLEDGE AND BELIEF.

PROFESSIONAL LAND SURVEYOR

DATE 7-18-18

TIE SKETCH

NOTE: THE CORNER FALLS 5± SOUTH OF THE NORTH EDGE OF THE ISLAND OF SHORT SWORD CT.



- SET 3/4" x 18" IRON REBAR, 1.50#/FT
- FOUND 3/4" IRON ROD
- ⊕ FOUND 1" O.D. IRON PIPE
- ⊙ FOUND HARRISON MONUMENT

