

PUBLIC LAND SURVEY MONUMENT RECORD

TYPE OF MONUMENT: HARRISON (BROKEN-TOP)
 ADAMS COUNTY COORDINATES, NAD 83 (2007)

N. 303417.202

E. 530628.875

ELEVATION- - - - - DATUM - - - - -

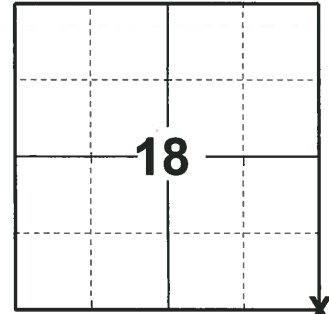
FIELD WORK DATE: 05/09/2018

BASIS FOR MONUMENT LOCATION

1976 - PLS 878 TRAVERSED THE SECTION TO DETERMINE THE SEARCH AREA. EXCAVATED WITH A BACKHOE AND FOUND A 1/2" x 24" IRON ROD. ACCEPTED AS THE CORNER LOCATION AND REPLACED WITH A HARRISON AND TIED OUT.

1981 - PLS PREVIOUS HARRISON MONUMENT AND SOME OF THE TIES WERE REMOVED IN ROAD CONSTRUCTION. RE-SET THE CORNER FROM REMAINING TIE AND RETRACEMENT OF THE APACHE TRAILS SUBDIVISION AND RE-TIED CORNER.

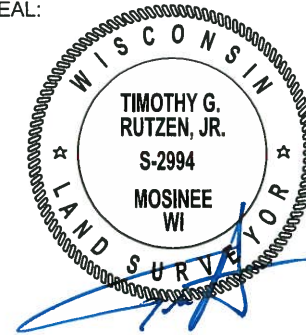
2018 - PLS 2994 FOUND A HARRISON MONUMENT WITH A BROKEN-TOP 24" BELOW THE ROAD SURFACE. FOUND NO EVIDENCE OF ANY OF THE WITNESSES. ACCEPTED THE HARRISON MONUMENT WITH A BROKEN-TOP AS THE BEST EVIDENCE OF THE CORNER LOCATION. SET 4 NEW TIES AND MEASURED TO THE TIES.



LOCATION

(INDICATE CORNER BY "X")

SEAL:



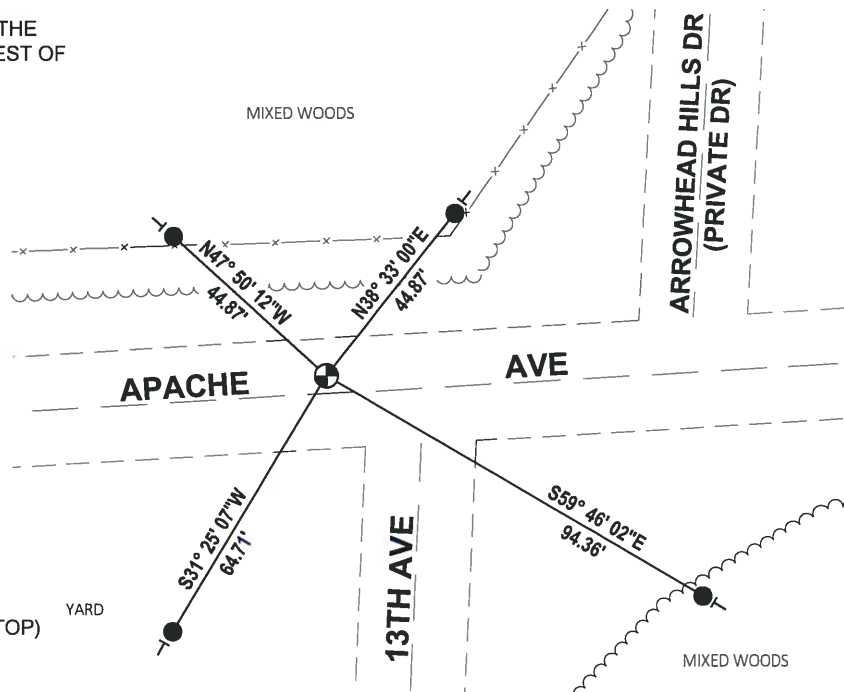
DATA SHOWN HERE ON THIS TIE SHEET IS CORRECT AND COMPLETE TO THE BEST OF MY KNOWLEDGE AND BELIEF.

PROFESSIONAL LAND SURVEYOR

DATE 7-18-18

TIE SKETCH

NOTE: THE CORNER FALLS 4± NORTH OF THE CENTERLINE OF APACHE AVE AND 21± WEST OF THE CENTERLINE OF 13TH AVE.

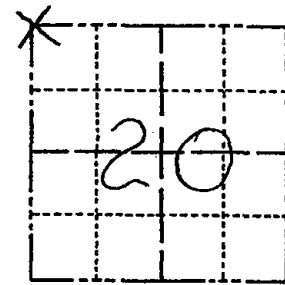


- SET 3/4" x 18" IRON REBAR, 1.50#/FT
- ⊕ FOUND HARRISON MONUMENT (BROKEN-TOP)
- VINYL "T" POST

Government Land Corner Certificate

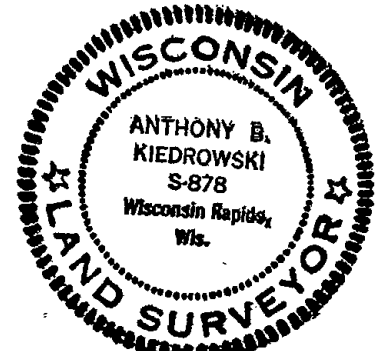
ADAMS County
 TYPE OF MONUMENT: HARRISON
 STATE PLANE COORDINATES: N _____
 E _____
 ELEVATION — M.S.L. DATUM: _____
 THETA ANGLE: _____
 FIELD BOOK: 88 PAGE 21
 DRAWN BY: N.J.

CORNER NO. 63
 SECTION 20
 TOWN 20
 RANGE 6



LOCATION
 (Indicated by 'X')

SEAL:



DATA SHOWN HERE ON
 CERTIFIED CORRECT:

Anthony B. Kiedrowski
 Registered Land Surveyor

DATE: 8/4/81

BASIS FOR MONUMENT LOCATION

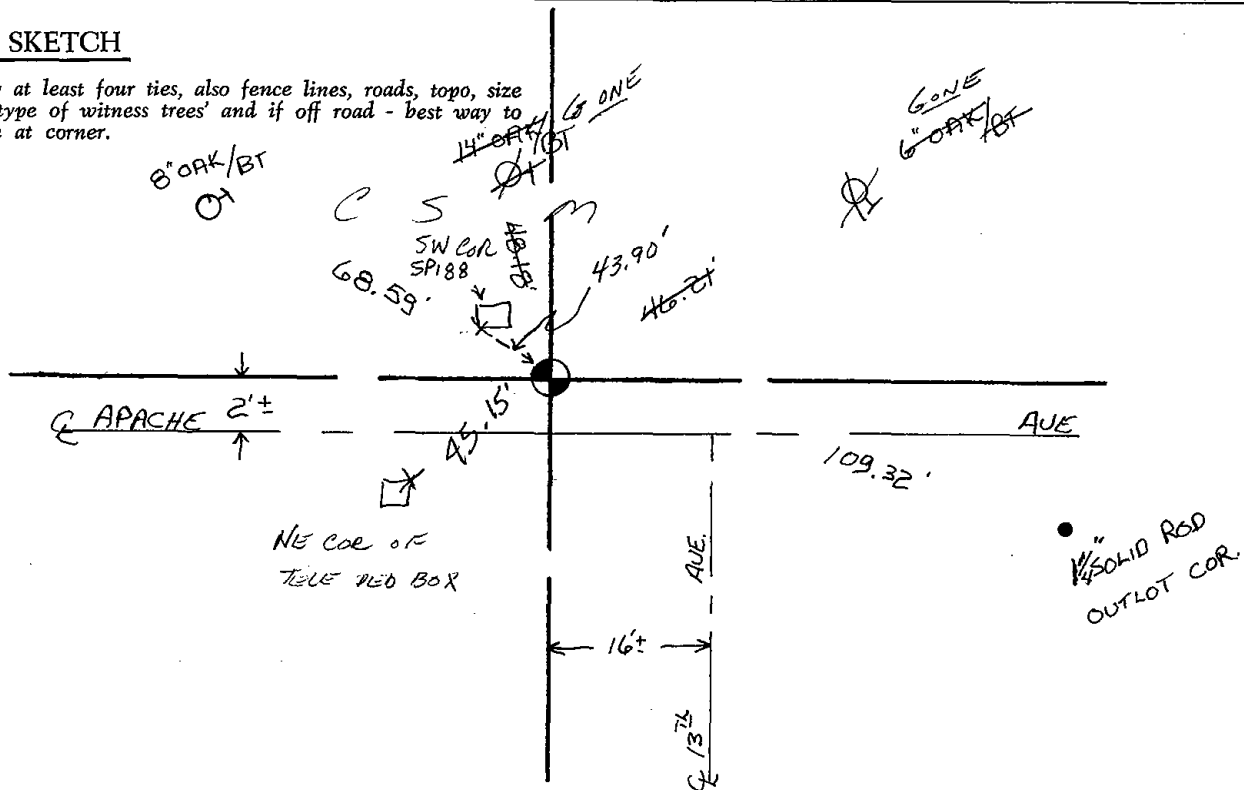
Show info such as: History of corner, with reference to Vol. and pg., dates, surveyor; exact description of monument replaced; if location computed, by taped or EDM traverse; landowner remarks, etc. (Use reverse side if necessary)

Previous Harrison monument and some ties removed in road construction. Corner reset from remaining tie and a retracement of Apache Trails Subdivision.

- Ok 4-25-84 SS-DK
- " 1-18-89 SS
- OK 2-11-94 CR-SS
- 2-GONE, 2-NEW TIES, 12-29-97-JG
- 2-18-04-JG - OK
- 1-11-10: FO MAG NAIL - NO TIES - CHECK FOR SURVEYS - NEED TO VERIFY

TIE SKETCH

Show at least four ties, also fence lines, roads, topo, size and type of witness trees' and if off road - best way to arrive at corner.



ADAMS COUNTY

Survey Monument Record

TYPE OF MONUMENT: HARRISON

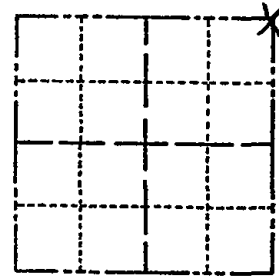
STATE PLANE COORDINATES: N _____
E _____

ELEVATION — M.S.L. DATUM: _____

THETA ANGLE: _____

FIELD BOOK: file PAGE _____

CORNER NO. 870 ⁽⁶³⁾
SECTION 19
TOWN 20
RANGE 6E



LOCATION
(Indicated by 'X')

SEAL:



BASIS FOR MONUMENT LOCATION

(Use reverse side if necessary)

Show info such as: History of corner, with reference to Vol. and pg, dates, surveyor; exact description of monument replaced; if location computed, by taped or EDM traverse; landowner remarks, etc.

Traversed section in order to determine search area. Excavated with backhoe. Found 1/2" x 24" iron rod. Accepted as corner and replaced rod with Harrison.

Reset 8/4/81 See New Tie sheet

CERTIFIED CORRECT:

Anthony B. Kiedrowski
Registered Land Surveyor

DATE: 1/23/76

TIE SKETCH

(Show at least four ties)

