

PUBLIC LAND SURVEY MONUMENT RECORD

TYPE OF MONUMENT: HARRISON (BROKEN-TOP)
 ADAMS COUNTY COORDINATES, NAD 83 (2007)

N. 303550.475

E. 543870.286

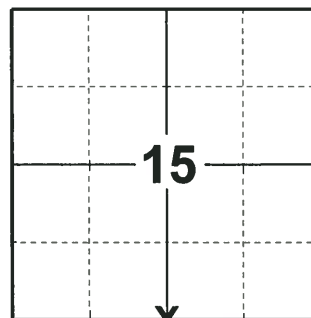
ELEVATION- DATUM

FIELD WORK DATE: 05/08/2018

BASIS FOR MONUMENT LOCATION

1981 - PLS 878 RETRACED LAKE SHERWOOD PLATS TIED TO THIS CORNER. FOUND A 1/2" x 24" SOLID ROUND IRON BAR. REPLACED THE IRON BAR WITH A HARRISON MONUMENT AND TIED OUT.

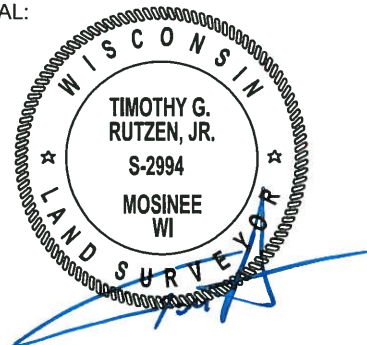
2018 - PLS 2994 FOUND A HARRISON MONUMENT WITH A BROKEN-TOP 18" BELOW THE ROAD SURFACE. FOUND NO EVIDENCE OF ANY WITNESSES. ACCEPTED THE HARRISON MONUMENT WITH A BROKEN-TOP AS THE BEST EVIDENCE OF THE CORNER LOCATION. SET 4 NEW TIES AND MEASURED TO THE TIES.



LOCATION

(INDICATE CORNER BY "X")

SEAL:



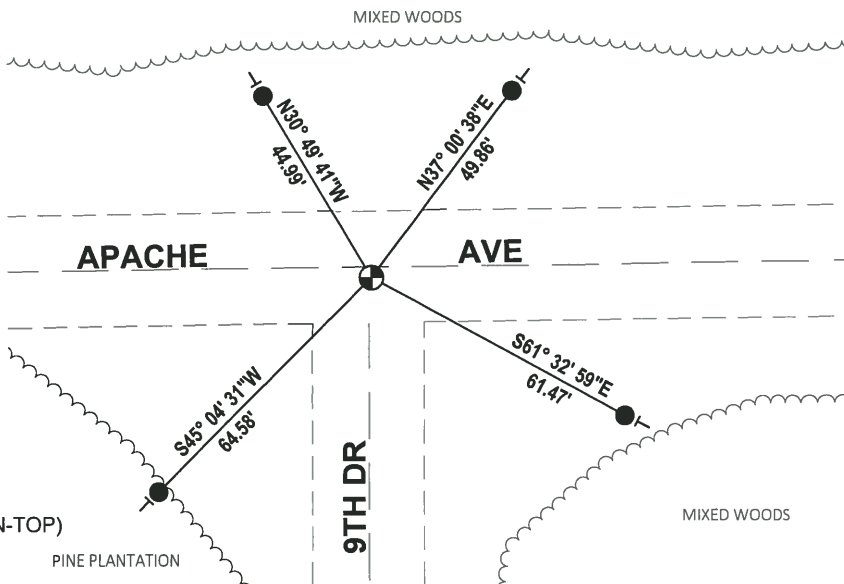
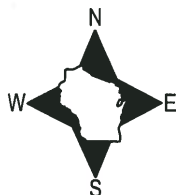
DATA SHOWN HERE ON THIS TIE SHEET IS CORRECT AND COMPLETE TO THE BEST OF MY KNOWLEDGE AND BELIEF.

PROFESSIONAL LAND SURVEYOR

DATE 7-18-18

- TIE SKETCH -

NOTE: THE CORNER FALLS 3'± SOUTH OF THE CENTERLINE OF APACHE AVE AND 0.5'± EAST OF THE CENTERLINE OF 9TH DR.



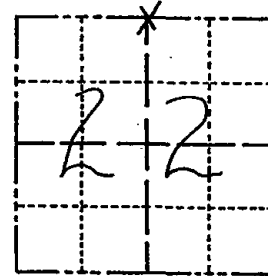
- SET 3/4" x 18" IRON REBAR, 1.50#/FT
- ⊕ FOUND HARRISON MONUMENT (BROKEN-TOP)
- VINYL "T" POST

FD 1/2" SOLID IRON BAR REPLACED

Government Land Corner Certificate

ADAMS County
 TYPE OF MONUMENT: HARRISON
 STATE PLANE COORDINATES: N _____
 E _____
 ELEVATION — M.S.L. DATUM: _____
 THETA ANGLE: _____
 FIELD BOOK: 69 PAGE 132
 DRAWN BY: L. COOMBS

CORNER NO. 68
 SECTION 22
 TOWN 20
 RANGE 6



LOCATION
 (Indicated by 'X')

BASIS FOR MONUMENT LOCATION

Show info such as: History of corner, with reference to Vol. and pg., dates, surveyor; exact description of monument replaced; if location computed, by taped or EDM traverse; landowner remarks, etc. (Use reverse side if necessary)

Retraced pertinent Lake Sherwood plats tied to this corner. Found 1/2" x 24" solid round iron bar. Replaced bar found with Harrison monument.

Ok 4-19-84 DJK

SEAL:



DATA SHOWN HERE ON
 CERTIFIED CORRECT:

Anthony B. Kiedrowski
 Registered Land Surveyor

DATE: 8/4/81

TIE SKETCH

Show at least four ties, also fence lines, roads, topo, size and type of witness trees and if off road - best way to arrive at corner.

