

14 SECTION 20 TOWN 06 RANGE

ADAMS COUNTY

COUNTY CORNER NO: 71
 ROMPORTOL ID: 42006140000

PUBLIC LAND SURVEY MONUMENT RECORD

TYPE OF MONUMENT: HARRISON (BROKEN-TOP)
 ADAMS COUNTY COORDINATES, NAD 83 (2007)

N. 303622.973

E. 551750.433

ELEVATION- DATUM

FIELD WORK DATE: 05/08/2018

BASIS FOR MONUMENT LOCATION

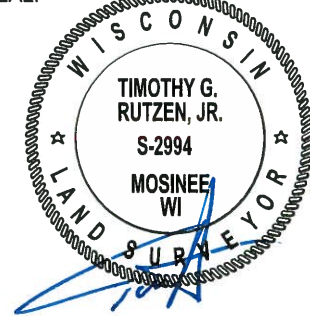
1977 - PLS 878 RAN TRAVERSE AROUND SECTIONS 36, 25 AND PARTS OF ADJOINING SECTIONS TO DETERMINE SEARCH AREA FOR INVESTIGATION. EXCAVATION WITH A BACKHOE AT CORNER BY ANTHONY B. KIEDROWSKI, ADAMS COUNTY SURVEYOR, YIELDED THE BOTTOM 12" OF A 3" DIAMETER POINTED WOOD POST IN VERY ROTTED CONDITION. POST HAD BEEN SET BY ORIGINAL GOVERNMENT SURVEYOR. REPLACED THE POST WITH A HARRISON MONUMENT ON NOV. 9, 1977 AND TIED OUT.

2018 - PLS 2994 FOUND A HARRISON MONUMENT WITH A BROKEN-TOP 18" BELOW THE ROAD SURFACE. FOUND NO EVIDENCE OF ANY OF THE WITNESSES. ACCEPTED THE HARRISON MONUMENT WITH A BROKEN-TOP AS THE BEST EVIDENCE OF THE CORNER LOCATION. SET 4 NEW TIES AND MEASURED TO THE TIES.



LOCATION
 (INDICATE CORNER BY "X")

SEAL:



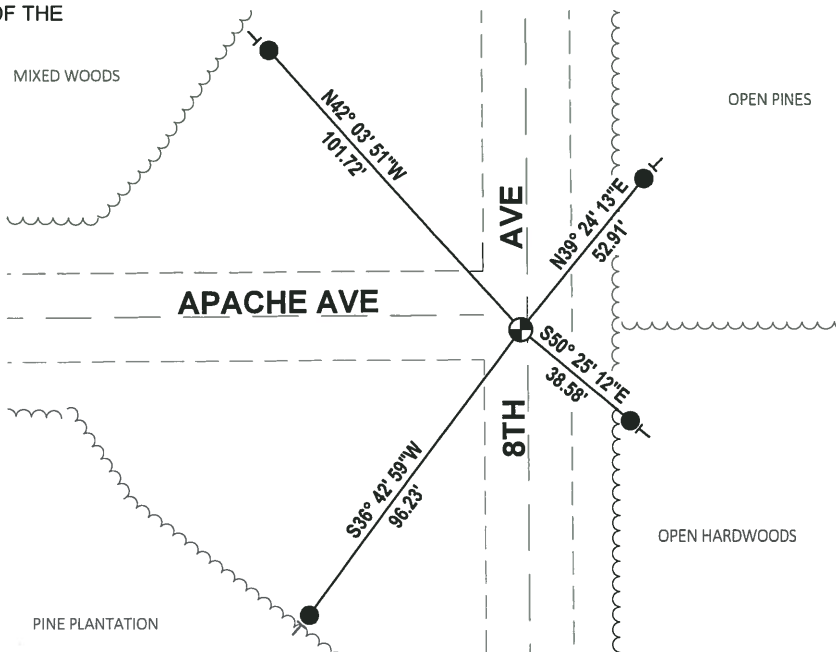
DATA SHOWN HERE ON THIS TIE SHEET IS CORRECT AND COMPLETE TO THE BEST OF MY KNOWLEDGE AND BELIEF.

PROFESSIONAL LAND SURVEYOR

DATE 7-18-18

TIE SKETCH

NOTE: THE CORNER FALLS 3± WEST OF THE CENTERLINE OF 8TH AVE AND 6± SOUTH OF THE CENTERLINE OF APACHE AVE.

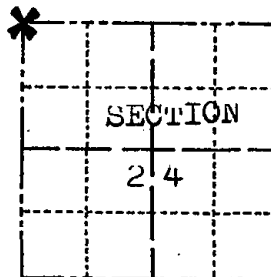


- SET 3/4" x 18" IRON REBAR, 1.50#/FT
- ⊕ FOUND HARRISON MONUMENT
- └ VINYL "T" POST

Government Land Corner Certificate

ADAMS County
 TYPE OF MONUMENT: HARRISON STD.
 STATE PLANE COORDINATES: N _____
 E _____
 ELEVATION — M.S.L. DATUM: _____
 THETA ANGLE: _____
 FIELD BOOK: 57 (101) PAGE 39 (120)
 DRAWN BY: SCOTT SORENSEN

CORNER NO. 71
 SECTION 24
 TOWN 20
 RANGE 6



LOCATION
(Indicated by 'X')

BASIS FOR MONUMENT LOCATION

Show info such as: History of corner, with reference to Vol. and pg., dates, surveyor; exact description of monument replaced; if location computed, by taped or EDM traverse; landowner remarks, etc. (Use reverse side if necessary)

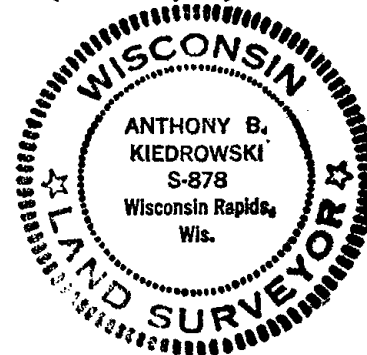
Ran EDM/T2 traverse around Sections 36, 25 and parts of adjoining sections to determine search area for investigation.

Excavation with backhoe by Anthony B. Kiedrowski, Adams County Surveyor, yielded bottom 12" of 3" diameter pointed wood post in very rotted condition. Post had been set by Original Government Surveyor.

Replaced post with Harrison Monument on Nov. 9, 1977.

see the reverse side for the updated map 4-19-84

SEAL:



DATA SHOWN HERE ON
CERTIFIED CORRECT:

Anthony B. Kiedrowski
Registered Land Surveyor

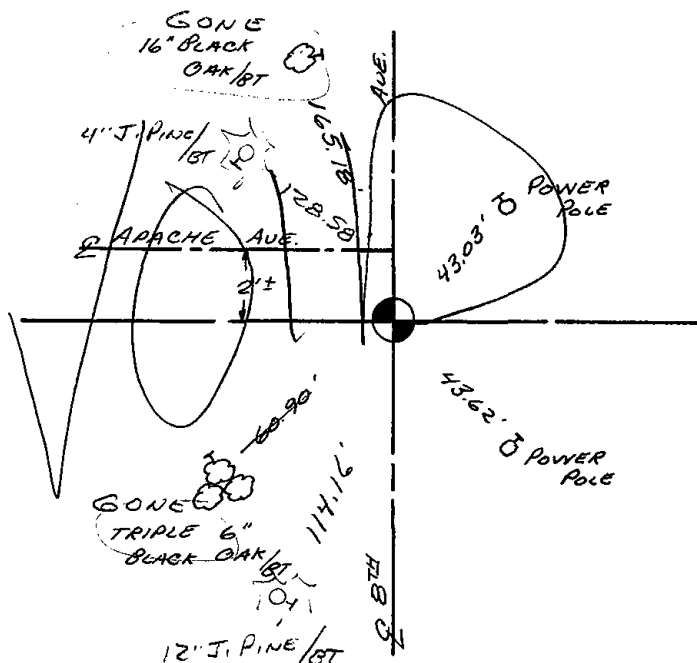
DATE: December 27, 1977

TIE SKETCH

Show at least four ties, also fence lines, roads, topo, size and type of witness trees' and if off road - best way to arrive at corner.

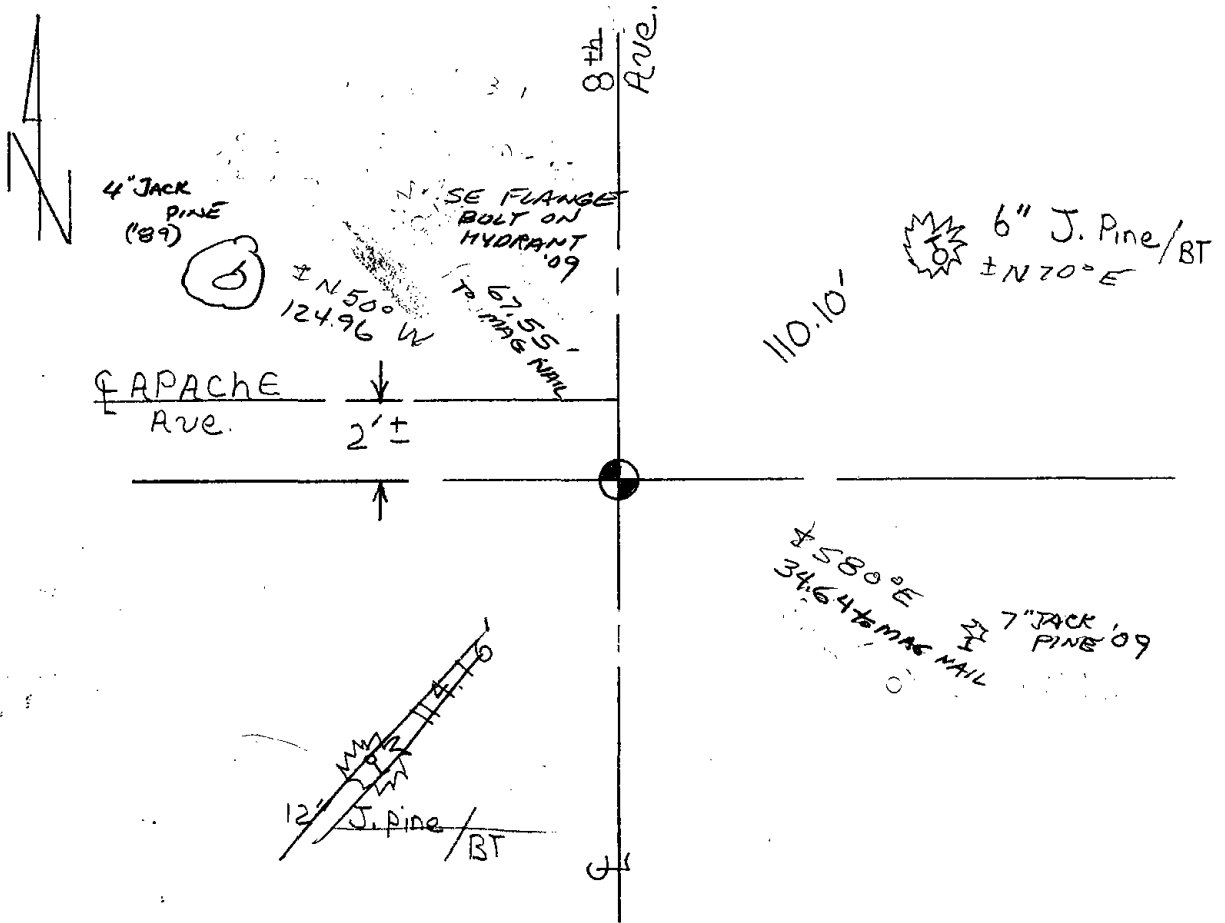
NOTE

Ties in trees to nail in disc.



MAINTENANCE RECORD

| Date | Init. | Remarks |
|----------|--------|----------------------|
| 4-13-79 | JSK-SS | OK |
| 83-07-94 | ALSS | OK |
| 1-11-99 | JG-JF | OK |
| 2-24-04 | JG | OK, MAGNAIL @ CORNER |
| 3-04-09 | SS | 2 NEW TIES TO MAG |



2 new ties were set on 4-19-84 DK-SS