

20
SECTION

20
TOWN

06
RANGE

ADAMS COUNTY

COUNTY CORNER NO: 76

ROMPORTOL ID: 42006202000

PUBLIC LAND SURVEY MONUMENT RECORD

TYPE OF MONUMENT: HARRISON
ADAMS COUNTY COORDINATES, NAD 83 (2007)

N. 300799.313

E. 535883.150

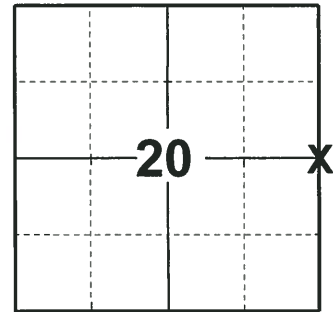
ELEVATION- DATUM

FIELD WORK DATE: 05/17/2018

BASIS FOR MONUMENT LOCATION

1981 - PLS 878 NO RECORD OF ANY RESURVEYS. FOUND NO EVIDENCE OF ANY PREVIOUS MONUMENTATION OR POSSESSION LINES. CALCULATED THE CORNER ON A STRAIGHT LINE EQUIDISTANT BETWEEN SECTION CORNERS. SET HARRISON AND TIED OUT.

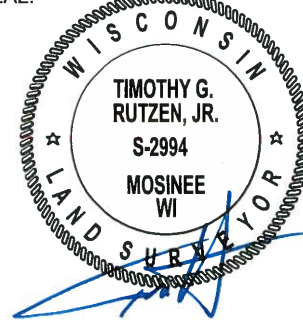
2018 - PLS 2994 FOUND A HARRISON MONUMENT FLUSH WITH THE GROUND SURFACE AND 1 TIE. THE MONUMENT AGREES WITH THE EXISTING TIE. ACCEPTED THE HARRISON MONUMENT AS THE CORNER LOCATION. SET 3 NEW TIES AND MEASURED TO THE TIES.



LOCATION

(INDICATE CORNER BY "X")

SEAL:



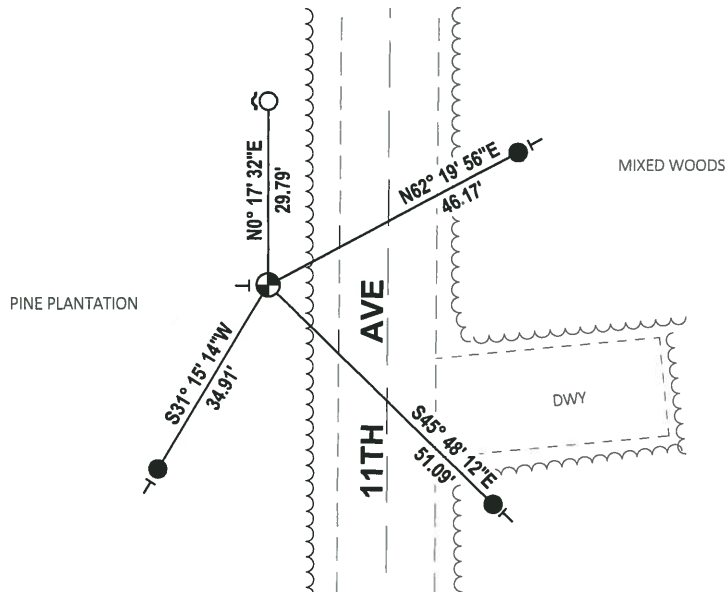
DATA SHOWN HERE ON THIS TIE SHEET IS CORRECT AND COMPLETE TO THE BEST OF MY KNOWLEDGE AND BELIEF.

PROFESSIONAL LAND SURVEYOR

DATE 7-18-18

- TIE SKETCH -

NOTE: THE CORNER FALLS 20'± WEST OF THE CENTERLINE OF 11TH AVE.



- SET 3/4" x 18" IRON REBAR, 1.50#/FT
- FOUND 3/4" IRON ROD
- ⊙ FOUND HARRISON MONUMENT
- ↗ STEEL FENCE POST
- ┊ VINYL "T" POST

Government Land Corner Certificate

ADAMS County

TYPE OF MONUMENT: HARRISON

STATE PLANE COORDINATES: N _____
E _____

ELEVATION — M.S.L. DATUM: _____

THETA ANGLE: _____

FIELD BOOK: 69 PAGE 130

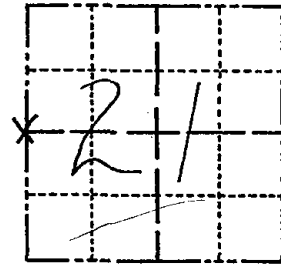
DRAWN BY: L. COOMBS

CORNER NO. 76

SECTION 21

TOWN 20

RANGE 6



LOCATION
(Indicated by 'X')

BASIS FOR MONUMENT LOCATION

Show info such as: History of corner, with reference to Vol. and pg., dates, surveyor; exact description of monument replaced; if location computed, by taped or EDM traverse; landowner remarks, etc. (Use reverse side if necessary)

No record of any resurveys. Could find no evidence of previous monumentation or possession lines. This corner is set on a straight line equidistant between section corners.

Ok 5-7-84 SS-DK

2 NEW TIES 6-13-89 MK-SS

2 " " 3-8-94 SS

1-GONE, 1-NEW, 3-4-99-JG-SS

1-GONE, 4-LEFT, 3-17-04-JG

3 NEW TIES 07-10-09 SS

SEAL:



DATA SHOWN HERE ON
CERTIFIED CORRECT:

Anthony B. Kiedrowski
Registered Land Surveyor

DATE: 8/4/81

TIE SKETCH

Show at least four ties, also fence lines, roads, topo, size and type of witness trees and if off road - best way to arrive at corner.

