

PUBLIC LAND SURVEY MONUMENT RECORD

TYPE OF MONUMENT: HARRISON
 ADAMS COUNTY COORDINATES, NAD 83 (2007)

N. 298151.217

E. 535865.615

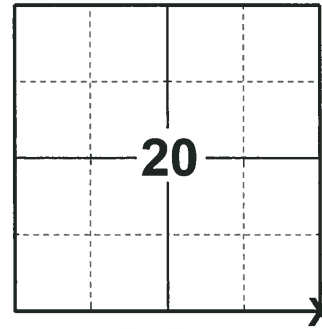
ELEVATION- DATUM

FIELD WORK DATE: 05/10/2018

BASIS FOR MONUMENT LOCATION

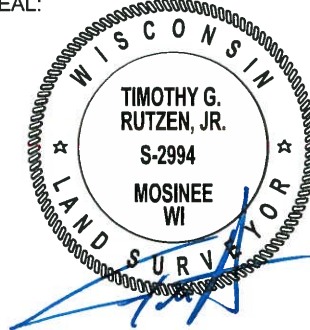
1974 - PLS 1103 FOUND THE STUMP OF A PINE BEARING TREE SET BY COUNTY SURVEYOR M.C. SMITH IN 1912, BEARING S 38° W, 76 LINKS. EXCAVATION WITH A BACKHOE AT THE CORNER LOCATION YIELDED THE REMAINS OF A WOOD STAKE. (VOL. 1, PAGE 160) REPLACED IT WITH A STANDARD HARRISON MONUMENT AND TIED OUT.

2018 - PLS 2994 FOUND A HARRISON MONUMENT 6" BELOW THE ROAD SURFACE. FOUND NO EVIDENCE OF ANY OF THE TIES OR WITNESSES. ACCEPTED THE HARRISON MONUMENT AS THE BEST EVIDENCE OF THE CORNER LOCATION. SET 4 NEW TIES AND MEASURED TO THE TIES.



LOCATION
 (INDICATE CORNER BY "X")

SEAL:



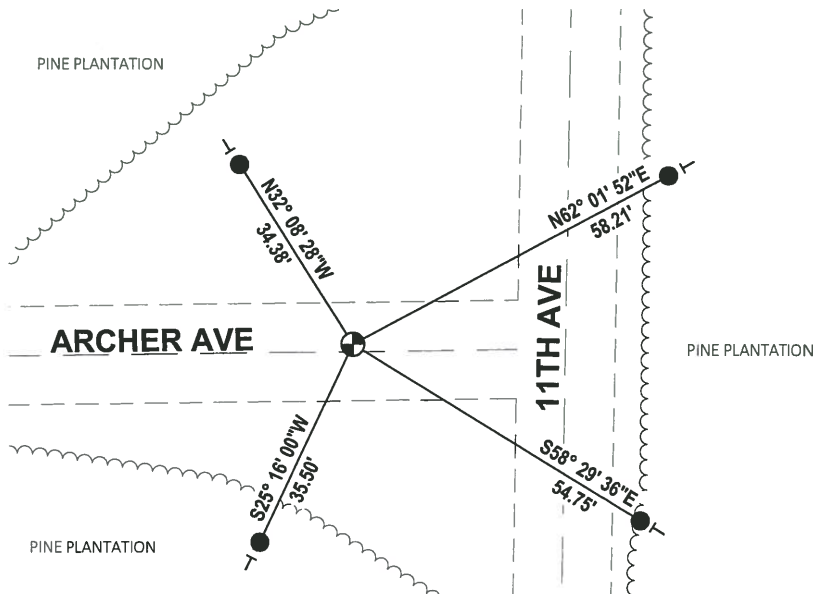
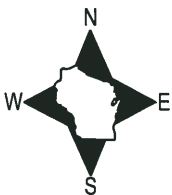
DATA SHOWN HERE ON THIS TIE SHEET IS CORRECT AND COMPLETE TO THE BEST OF MY KNOWLEDGE AND BELIEF.

PROFESSIONAL LAND SURVEYOR

DATE 7-18-18

TIE SKETCH

NOTE: THE CORNER FALLS 1½ NORTH OF THE CENTERLINE OF ARCHER AVE AND 35½ WEST OF THE CENTERLINE OF 11TH AVE.



- SET 3/4" x 18" IRON REBAR, 1.50#/FT
- ⊕ FOUND HARRISON MONUMENT
- ┊ VINYL "T" POST

ADAMS COUNTY

Survey Monument Record

TYPE OF MONUMENT: STANDARD HARRISON

STATE PLANE COORDINATES: N _____ E _____

ELEVATION — M.S.L. DATUM: _____

THETA ANGLE: _____

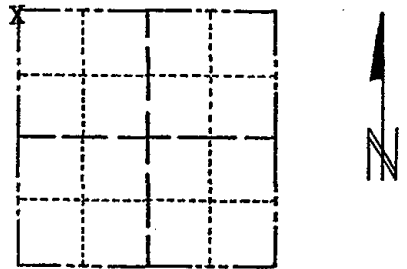
FIELD BOOK 111 PAGE 9

CORNER NO. 376

SECTION 28

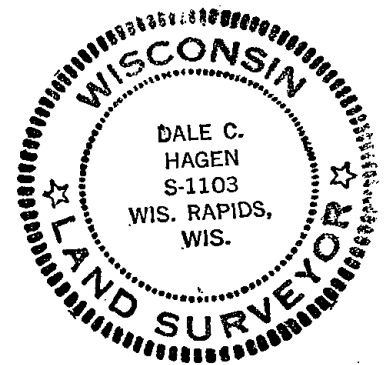
TOWN 20 N

RANGE 6 E



LOCATION (Indicated by 'X')

SEAL:



BASIS FOR MONUMENT LOCATION

(Use reverse side if necessary)

Show info such as: History of corner, with reference to Vol. and pg. dates, surveyor; exact description of monument replaced; if location computed, by taped or EDM traverse; landowner remarks, etc.

Found stump of pine bearing tree set by County Surveyor M.C. Smith in 1912, bearing S 38° W, 76 links. Excavation with backhoe at location indicated yielded the remains of a wood stake. (Vol. 1, Page 160) Replaced with Standard Harrison monument.

7-10-09 4 NEW TIES - ALL SLOPE TAPE

OK 6-7-79 PA-RV

2 new 5-7-84 SS-DK

3 NEW TIES 6-13-89 MK-SS

4 REMAINING TIES

3-8-94 SS

1-GONE, 3 REMAIN

12-29-98-JG

OK, 3-17-04-JG

CERTIFIED CORRECT:

Dale C. Hagen
Registered Land Surveyor

DATE: April 20, 1974

TIE SKETCH

(Show at least four ties)

NOTE: All ties to nail and disc.

