

PUBLIC LAND SURVEY MONUMENT RECORD

TYPE OF MONUMENT: 1-1/4" O.D. IRON PIPE
 ADAMS COUNTY COORDINATES, NAD 83 (2007)

N. 298327.279

E. 557126.832

ELEVATION- --- DATUM ---

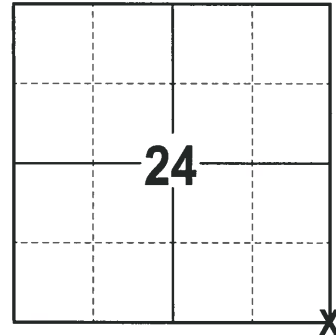
FIELD WORK DATE: 02/05/2018

BASIS FOR MONUMENT LOCATION

1980 - PLS 1478 CALCULATED THE MONUMENT USING SINGLE PROPORTIONATE MEASUREMENT AND ON LINE BETWEEN THE NE CORNER SECTION 13-20-6 AND THE SE CORNER OF 25-20-6. NO EVIDENCE OF ANY PREVIOUS MONUMENTATION WAS FOUND. NO RECORD OF SUBSEQUENT MONUMENTATION TO THE ORIGINAL WAS FOUND. SET A HARRISON AND TIED OUT.

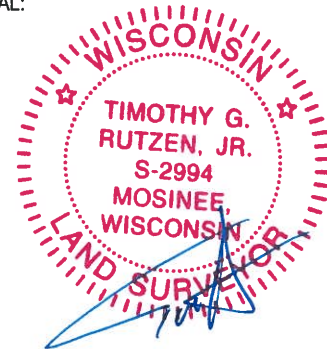
05/09/1980 - PLS UNKNOWN SET 1-1/4" X 72" IRON PIPE AT PREVIOUS HARRISON LOCATION.

2018 - PLS 2994 FOUND A 1-1/4" O.D. IRON PIPE 12" ABOVE THE GROUND SURFACE AND 3 WITNESS TREES. THE MONUMENT AGREES WITH THE EXISTING WITNESS TREES. ACCEPTED THE 1-1/4" O.D. IRON PIPE AS THE CORNER LOCATION. SET 4 NEW TIES AND MEASURED TO THE TIES AND WITNESS TREE.



LOCATION
 (INDICATE CORNER BY "X")

SEAL:

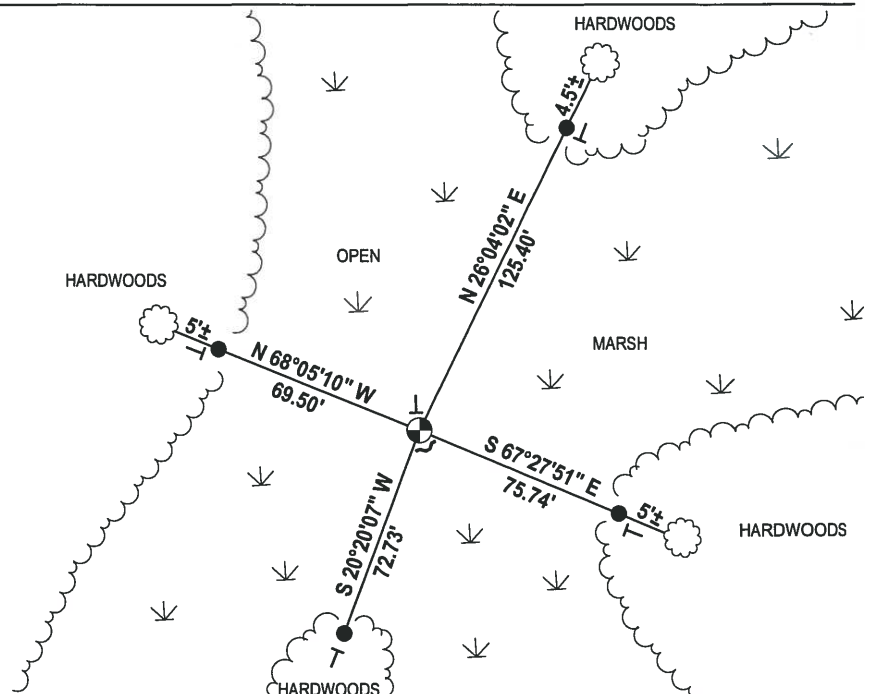
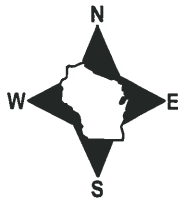


DATA SHOWN HERE ON THIS TIE SHEET IS CORRECT AND COMPLETE TO THE BEST OF MY KNOWLEDGE AND BELIEF.

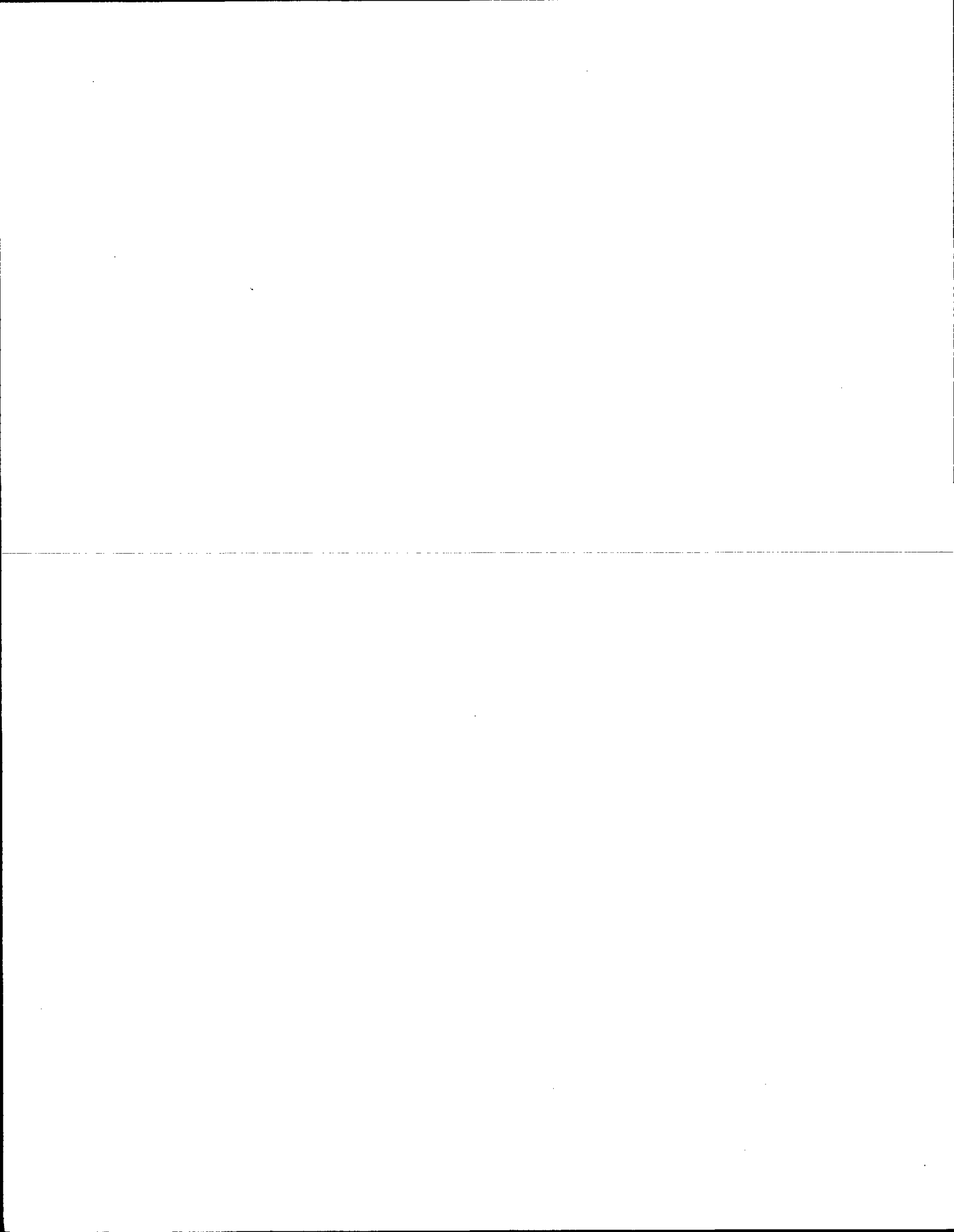
PROFESSIONAL LAND SURVEYOR

DATE 3-1-18

- TIE SKETCH



- 3/4" x 18" IRON REBAR SET, 1.50#/FT
- ⊙ 1-1/4" O.D. IRON PIPE FOUND
- ⊥ VINYL "T" POST
- ~ EXISTING STEEL FENCE POST
- ☉ FOUND WITNESS TREE



1 1/4" x 1/2" IRON PIPE SET 5/19/80

Government Land Corner Certificate

Adams County

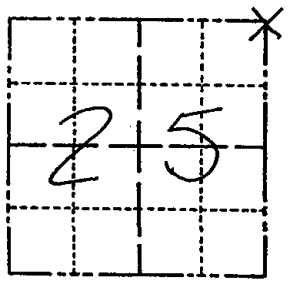
Mon 15 1" IP
5-18-89

CORNER NO. 93
SECTION 25
TOWN 20
RANGE 6

TYPE OF MONUMENT: Harrison standard
STATE PLANE COORDINATES: N _____
E _____

1" IRON PIPE
Harrison to be
placed in Spring
1980

ELEVATION — M.S.L. DATUM: _____
THETA ANGLE: _____
FIELD BOOK: 78 PAGE 104
DRAWN BY: G. Rhinehart



LOCATION
(Indicated by 'X')

BASIS FOR MONUMENT LOCATION

Show info such as: History of corner, with reference to Vol. and pg., dates, surveyor; exact description of monument replaced; if location computed, by taped or EDM traverse; landowner remarks, etc. (Use reverse side if necessary)

Set monument single proportionate and on line between the NE Corner Section 13-20-6 and the SE Corner of 25-20-6. No evidence of any previous monumentation was found. No record of monumentation subsequent to the original was found.

SEAL:



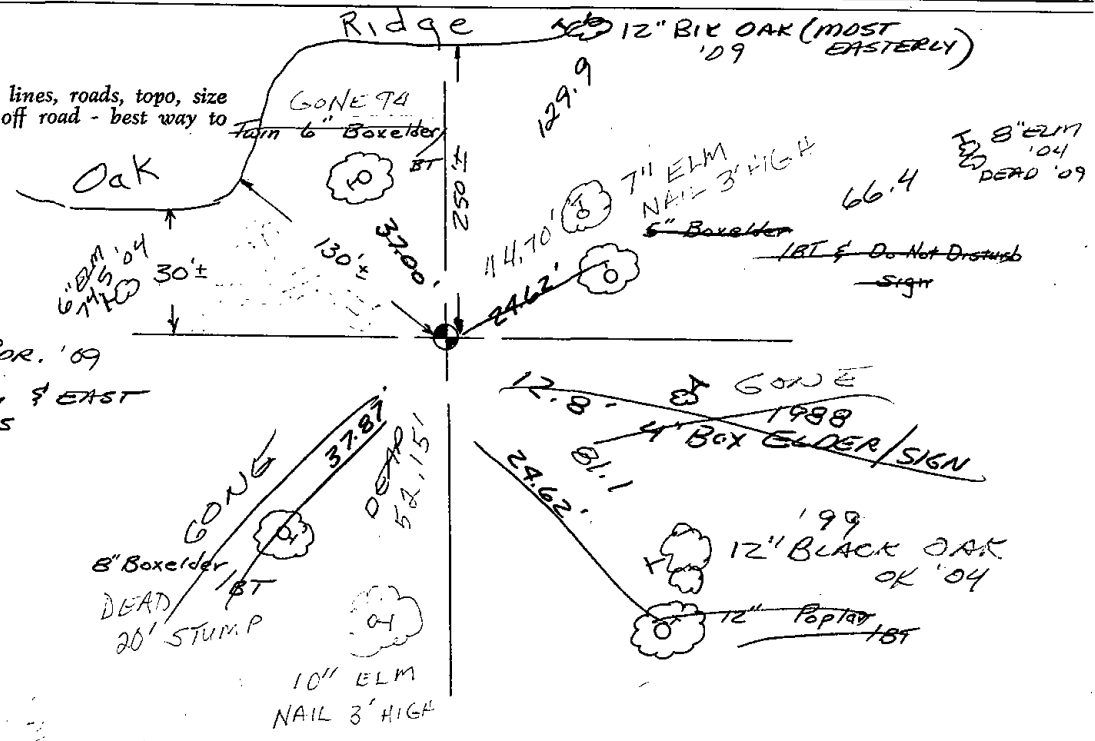
DATA SHOWN HERE ON CERTIFIED CORRECT:

Gregory P. Rhinehart
Registered Land Surveyor

DATE: 1/29/80

TIE SKETCH

Show at least four ties, also fence lines, roads, topo, size and type of witness trees and if off road - best way to arrive at corner.



FOUND
STEEL "T" POST AT COR. '89
AND
LINE MARKED NORTH & EAST
WITH STEEL POSTS

