

PUBLIC LAND SURVEY MONUMENT RECORD

TYPE OF MONUMENT: HARRISON
ADAMS COUNTY COORDINATES, NAD 83 (2007)

N. 295652.765

E. 546492.322

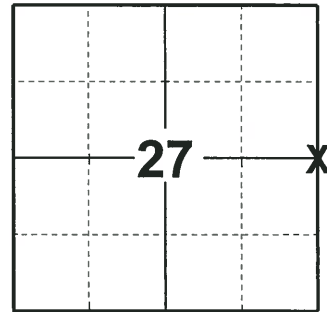
ELEVATION- DATUM

FIELD WORK DATE: 05/24/2018

BASIS FOR MONUMENT LOCATION

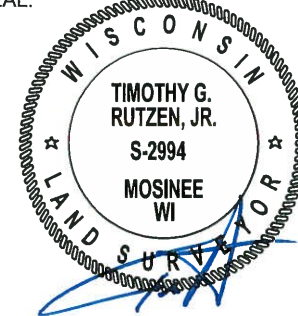
1981 - PLS 878 FOUND NO EVIDENCE OF THE ORIGINAL OR SUBSEQUENT MONUMENT. CALCULATED THE CORNER ON LINE AND EQUIDISTANT BETWEEN SECTION CORNERS AND TIED OUT.

2018 - PLS 2994 FOUND A HARRISON MONUMENT 6" ABOVE THE GROUND SURFACE. FOUND NO EVIDENCE OF ANY OF THE EXISTING WITNESSES. ACCEPTED THE HARRISON MONUMENT AS THE BEST EVIDENCE OF THE CORNER LOCATION. SET 4 NEW TIES AND MEASURED TO THE TIES.



LOCATION
(INDICATE CORNER BY "X")

SEAL:



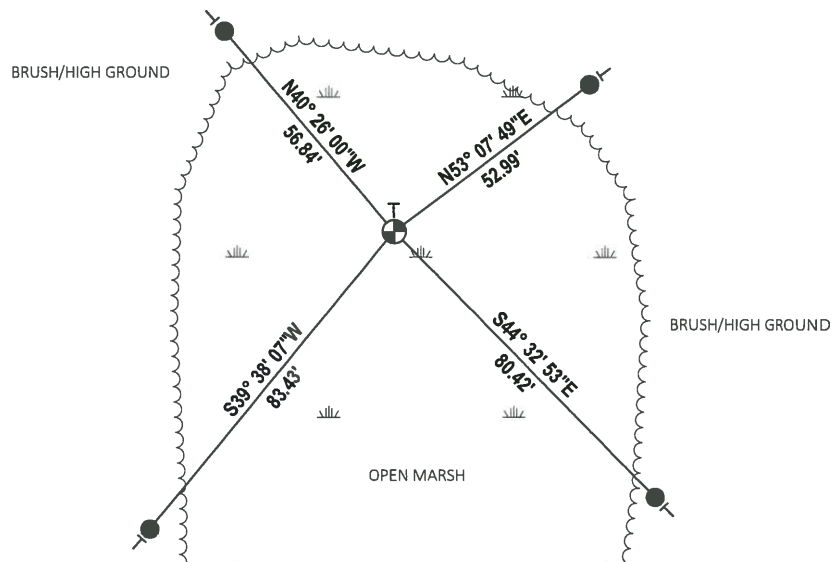
DATA SHOWN HERE ON THIS TIE SHEET IS CORRECT AND COMPLETE TO THE BEST OF MY KNOWLEDGE AND BELIEF.

PROFESSIONAL LAND SURVEYOR

DATE 7-18-18

TIE SKETCH

NOTE: THE CORN FALLS 300'± SOUTH OF THE TRAIL.

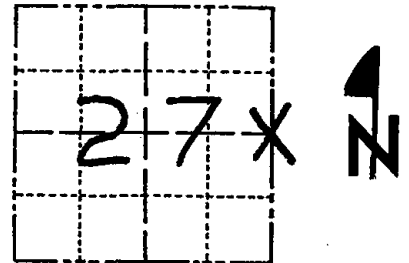


- SET 3/4" x 18" IRON REBAR, 1.50#/FT
- ⊕ FOUND HARRISON MONUMENT
- ⊖ VINYL "T" POST

Government Land Corner Certificate

Adams County
 TYPE OF MONUMENT: Harrison
 STATE PLANE COORDINATES: N _____
 E _____
 ELEVATION — M.S.L. DATUM: _____
 THETA ANGLE: _____
 FIELD BOOK: 86 PAGE 115
 DRAWN BY: T.H.

CORNER NO. 98
 SECTION 27
 TOWN 20
 RANGE 6



LOCATION
 (Indicated by 'X')

BASIS FOR MONUMENT LOCATION

Show info such as: History of corner, with reference to Vol. and pg., dates, surveyor; exact description of monument replaced; if location computed, by taped or EDM traverse; landowner remarks, etc. (Use reverse side if necessary)

SEAL:



No evidence of the original or subsequent monument. Corner set on line and equidistant between section corners. M.C. Smith set a post here in 1915, per 2/17

*No TIES REMAIN (WIND SPANN?) FOUND
 APPROXIMATE - ANGLE IRON POST IS SQUARE
 NEW POST LOCATED - 1000 ESTIMATED
 EAST OF BUILDINGS*

DATA SHOWN HERE ON
 CERTIFIED CORRECT:

Anthony B. Kiedrowski
 Registered Land Surveyor

DATE: 1/2/81

TIE SKETCH

Show at least four ties, also fence lines, roads, topo, size and type of witness trees' and if off road - best way to arrive at corner.

*Nail & Disk in Trees
 DND sign on post
 next to Harrison*

*5' TALL ANGLE
 IRON POST FOUND
 3-14-94*

