

## PUBLIC LAND SURVEY MONUMENT RECORD

TYPE OF MONUMENT: HARRISON (BROKEN-TOP)  
ADAMS COUNTY COORDINATES, NAD 83 (2007)

N. 295672.515

E. 551831.669

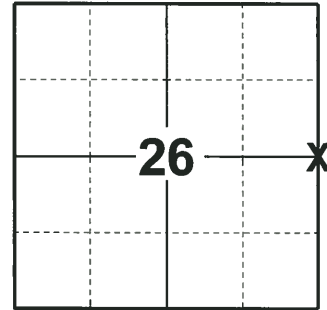
ELEVATION-          DATUM         

FIELD WORK DATE: 05/23/2018

### BASIS FOR MONUMENT LOCATION

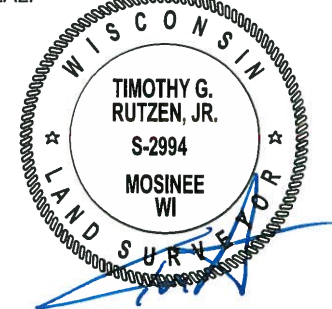
1978 - PLS 1103 RAN E.D.M./T2 TRAVERSE AROUND SECTION 25 AND PARTS OF ADJOINING SECTIONS TO DETERMINE THE SEARCH AREA FOR INVESTIGATION. EXCAVATION WITH A BACKHOE BY ANTHONY B. KIEDROWSKI, ADAMS COUNTY SURVEYOR, YIELDED NO EVIDENCE OF THE ORIGINAL CORNER OR ANY REMONUMENTATION. FOUND NO EVIDENCE OF THE BEARING TREES. RELOCATED THE CORNER BY SINGLE PROPORTIONATE MEASUREMENT ON LINE BETWEEN ADJACENT SECTION CORNERS. SET A HARRISON MONUMENT AND TIED OUT ON 11-9-1977.

2018 - PLS 2994 FOUND A HARRISON MONUMENT WITH A BROKEN-TOP 4" BELOW THE ROAD SURFACE AND 1 TIE. THE MONUMENT AGREES WITH THE EXISTING TIE. ACCEPTED THE HARRISON MONUMENT WITH A BROKEN-TOP AS THE CORNER LOCATION. SET 3 NEW TIES AND MEASURED TO THE TIES.



**LOCATION**  
(INDICATE CORNER BY "X")

SEAL:



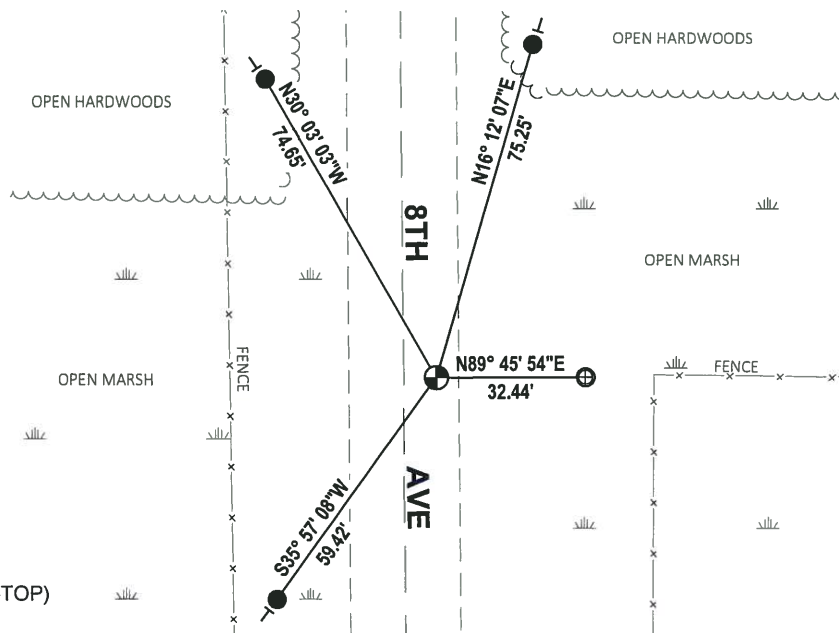
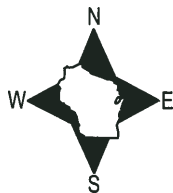
DATA SHOWN HERE ON THIS TIE SHEET IS CORRECT AND COMPLETE TO THE BEST OF MY KNOWLEDGE AND BELIEF.

PROFESSIONAL LAND SURVEYOR

DATE 7-18-18

### - TIE SKETCH

NOTE: THE CORNER FALLS 7'± EAST OF THE CENTERLINE OF 8TH AVE.

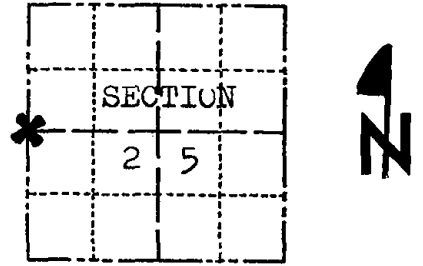


- SET 3/4" x 18" IRON REBAR, 1.50#/FT
- ⊕ FOUND 1" O.D. IRON PIPE
- ⊕ FOUND HARRISON MONUMENT (BROKEN-TOP)
- VINYL "T" POST

# Government Land Corner Certificate

ADAMS County  
 TYPE OF MONUMENT: HARRISON STD.  
 STATE PLANE COORDINATES: N \_\_\_\_\_  
 E \_\_\_\_\_  
 ELEVATION — M.S.L. DATUM: \_\_\_\_\_  
 THETA ANGLE: \_\_\_\_\_  
 FIELD BOOK: 57 PAGE 41  
 DRAWN BY: SCOTT SORENSEN

CORNER NO. 99  
 SECTION 25  
 TOWN 20  
 RANGE 6



LOCATION  
(Indicated by 'X')

## BASIS FOR MONUMENT LOCATION

Show info such as: History of corner, with reference to Vol. and pg., dates, surveyor; exact description of monument replaced; if location computed, by taped or EDM traverse; landowner remarks, etc. (Use reverse side if necessary)

Ran EDM/T2 traverse around Section 25 and parts of adjoining sections to determine search area for investigation.

Excavation with backhoe by Anthony B. Kiedrowski, Adams County Surveyor, yielded no evidence of the original corner or any remonumentation. Could find no evidence of bearing trees.

Relocated corner by single proportionate measure on line between adjacent section corners.

Set Harrison on 11-9-77.

All ok 7-17-84 MK-DK

SEAL:



DATA SHOWN HERE ON  
CERTIFIED CORRECT:

*Dale C. Hagen*  
Registered Land Surveyor

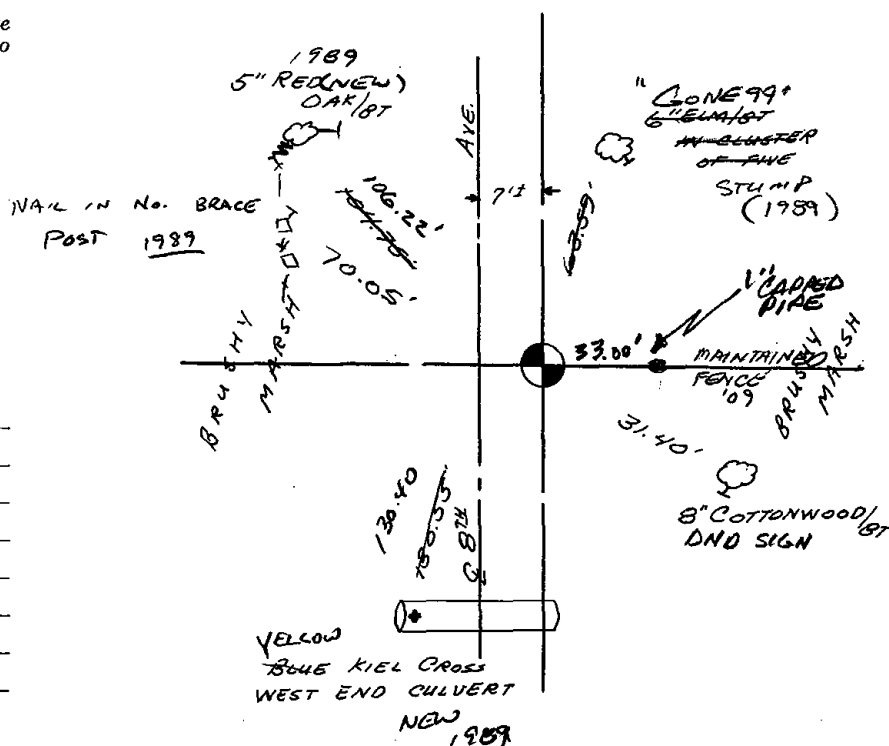
DATE: January 2, 1978

## TIE SKETCH

Show at least four ties, also fence lines, roads, topo, size and type of witness trees' and if off road - best way to arrive at corner.

### NOTE

Ties in trees to nail in disc.



## MAINTENANCE RECORD

Date	Init.	Remarks
4-13-79	JK-SS	OK
3-08-89	GL-SS	3 NEW TIES
3-01-94	GL-SS	OK
2-16-99	JG-SS	1 CONE, 4-LEFT
2-24-04	JG	1-NEW
3-04-09	SS	OK