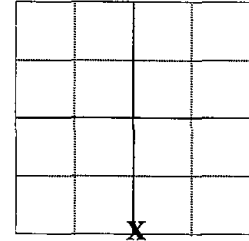


ADAMS COUNTY

Survey Monument Record

TYPE OF MONUMENT: Berntsen Nail
 STATE PLANE COORDINATES: N _____
 E _____
 ELEVATION — M.S.L. DATUM: _____
 THETA ANGLE: _____
 FIELD BOOK: _____ PAGE _____
 DRAWN BY: D. Christie

CORNER NO.	104
SECTION	29
TOWN	20 N
RANGE	6 E



LOCATION
(Indicated by 'X')

BASIS FOR MONUMENT LOCATION

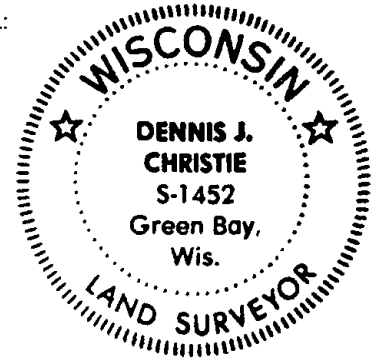
(Use reverse side if necessary)

Show info such as: History of corner, with reference to Vol. and pg. dates, surveyor; exact description of monument replaced; if location computed, by taped or EDM traverse; landowner remarks, etc.

Found Berntsen Monument on 9-8-2008, prior to 2008 Resurfacing Project. Set new reference monuments (4" Alum. Disks set in concrete) on 10-2-2008. Re-set section corner on 11-3-2008 and measured Ties.

SEE DALE HAGEN TIE SHEET 06-01-76

SEAL:



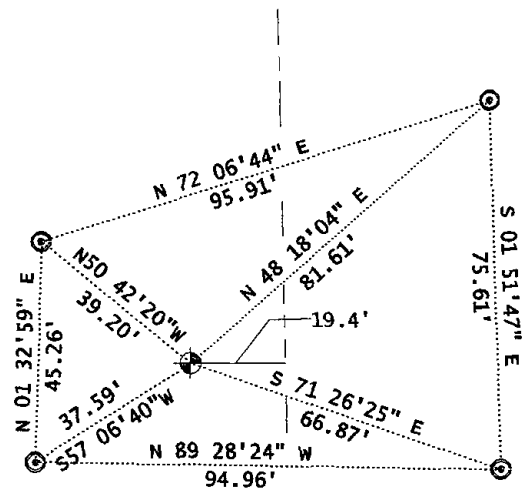
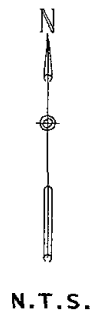
CERTIFIED CORRECT.

Dennis J. Christie
 Registered Land Surveyor

Date: 12-12-2008

TIE SKETCH

(Show at least four ties)



- 4" BERNTSEN MONUMENT
- 4" ALUM DISK IN CONCRETE

S T H 13

29
SECTION

20
TOWN

06
RANGE

ADAMS COUNTY

COUNTY CORNER NO: 104

ROMPORTOL ID: 42006290020

PUBLIC LAND SURVEY MONUMENT RECORD

TYPE OF MONUMENT: HARRISON
ADAMS COUNTY COORDINATES, NAD 83 (2007)

N. 292862.541

E. 533358.381

ELEVATION- - - - DATUM - - - -

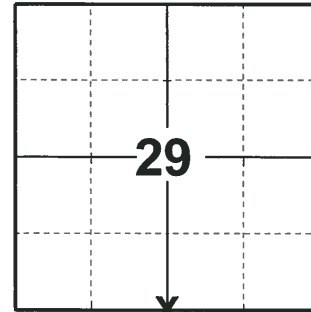
FIELD WORK DATE: 05/29/2018

BASIS FOR MONUMENT LOCATION

1976 - PLS 1103 RAN E.D.M./TRANSIT TRAVERSE AROUND SECTIONS 29 AND 32 TO DETERMINE SEARCH AREAS. DID NOT EXCAVATE BECAUSE THE SEARCH AREA FELL IN THE DITCH LINE OF STATE TRUNK HIGHWAY 13. FOUND NO EVIDENCE OF THE ORIGINAL CORNER OR ANY REMONUMENTATION. CALCULATED THE CORNER ON LINE BETWEEN ADJACENT SECTION CORNERS AND PROPORTIONAL TO THE ORIGINAL GOVERNMENT SURVEY DISTANCE. SET HARRISON AND TIED OUT.

2008 - PLS 1452 FOUND A BERNTSEN MONUMENT ON 9-8-2008, PRIOR TO 2008 RESURFACING PROJECT. SET NEW REFERENCE MONUMENTS (4" ALUMINUM DISKS IN CONCRETE) ON 10-2-2008. RE-SET THE SECTION CORNER ON 11-3-2008 AND MEASURED TIES.

2018 - PLS 2994 FOUND A HARRISON MONUMENT 10" BELOW THE GROUND SURFACE AND 4 TIES. THE MONUMENT AGREES WITH THE EXISTING TIES. ACCEPTED THE HARRISON MONUMENT AS THE CORNER LOCATION AND RE-MEASURED TO THE EXISTING TIES.



LOCATION
(INDICATE CORNER BY "X")

SEAL:



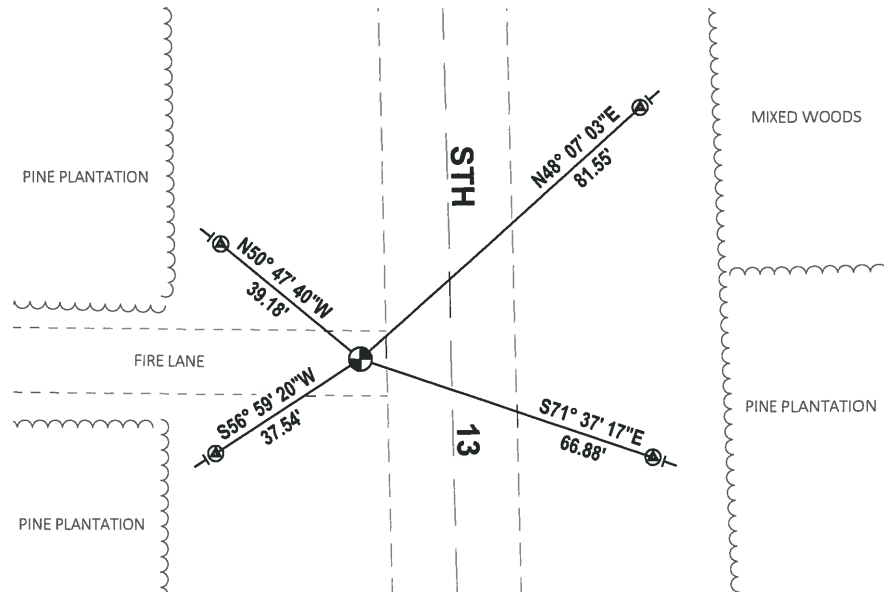
DATA SHOWN HERE ON THIS TIE SHEET IS CORRECT AND COMPLETE TO THE BEST OF MY KNOWLEDGE AND BELIEF.

PROFESSIONAL LAND SURVEYOR

DATE 7-18-18

- TIE SKETCH

NOTE: THE CORNER FALLS 20'± WEST OF THE CENTERLINE OF STH 13.



- ⊕ WISDOT ALUMINUM CAP IN CONCRETE
- ⊙ FOUND HARRISON MONUMENT
- ⊖ VINYL "T" POST

ADAMS COUNTY

Survey Monument Record

TYPE OF MONUMENT: Harrison

STATE PLANE COORDINATES: N _____

E _____

ELEVATION — M.S.L. DATUM: _____

THETA ANGLE: _____

FIELD BOOK: 37 PAGE 27

CORNER NO. 978 ¹⁰⁴

SECTION 29

TOWN 20

RANGE 6



LOCATION
(Indicated by 'X')

SEAL:



BASIS FOR MONUMENT LOCATION

(Use reverse side if necessary)

Show info such as: History of corner, with reference to Vol. and pg, dates, surveyor; exact description of monument replaced; if location computed, by taped or EDM traverse; landowner remarks, etc.

Ran EDM/transit traverse around Sections 29 and 32 to determine search areas.

Did not excavate because search area fell in the ditch line of State Trunk Highway 13.

Could find no evidence of the original corner or any remonumentation.

Set corner on line between adjacent section corners and proportional to the original government survey distances.

Set 4-15-1976

- OK 3 MARCH 94 CR-JG
- OK 7-13-79 RN-RW
- " 5-7-84 DK-SS

CERTIFIED CORRECT:

Dale C. Hagen

Registered Land Surveyor

DATE: 6-1-1976

TIE SKETCH OK 12-29-78 -JG

(Show at least four ties)

O.K. 4-11-89 MK-GR

SEE UPDATE

12-12-08

DENNIS CHRISTIE

