

PUBLIC LAND SURVEY MONUMENT RECORD

TYPE OF MONUMENT: HARRISON (BROKEN-TOP)
ADAMS COUNTY COORDINATES, NAD 83 (2007)

N. 287761.978

E. 546650.397

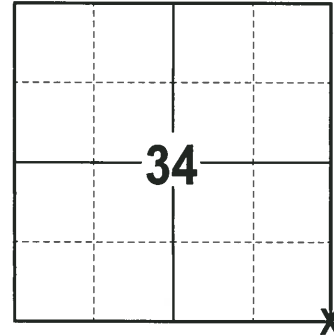
ELEVATION- DATUM

FIELD WORK DATE: 02/07/2018

BASIS FOR MONUMENT LOCATION

2013 - PLS 1478 RE-DRAFTED HIS OWN PRIOR TIESHEET FROM 1979. RHINEHART FOUND EXISTING 1" IRON BAR DURING TRAVERSE OF SECTION 35 AND ACCEPTED AS THE CORNER. EXCAVATION OF THIS AREA WITH THE BACKHOE YIELDED NO OTHER EVIDENCE OF MONUMENTATION AT THIS CORNER. SET HARRISON AND TIED OUT.

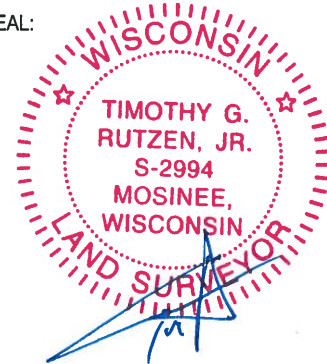
2018 - PLS 2994 FOUND HARRISON BROKEN-TOP, 8" BELOW THE ROAD SURFACE AND DID NOT RECOVER ANY WITNESSES. ACCEPTED THE HARRISON WITH BROKEN-TOP AS THE CORNER, SET AND MEASURED TO 4 NEW TIES.



LOCATION

(INDICATE CORNER BY "X")

SEAL:



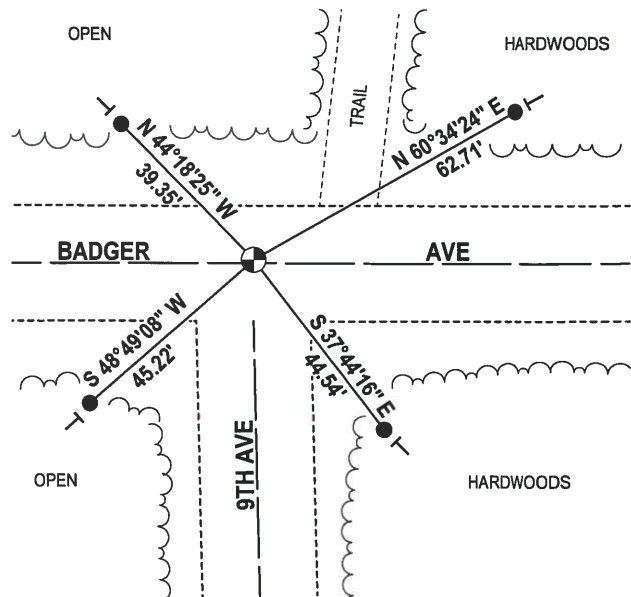
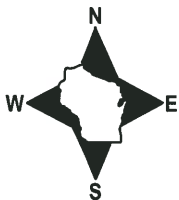
DATA SHOWN HERE ON THIS TIE SHEET IS CORRECT AND COMPLETE TO THE BEST OF MY KNOWLEDGE AND BELIEF.

PROFESSIONAL LAND SURVEYOR

DATE 3-1-18

- TIE SKETCH -

NOTE: THE CORNER FALLS 1½ NORTH OF THE CENTERLINE OF BADGER AVE.



- 3/4" x 18" IRON REBAR SET, 1.50#/FT
- ⊕ HARRISON (BROKEN-TOP) FOUND
- ┆ VINYL "T" POST

