

PUBLIC LAND SURVEY MONUMENT RECORD

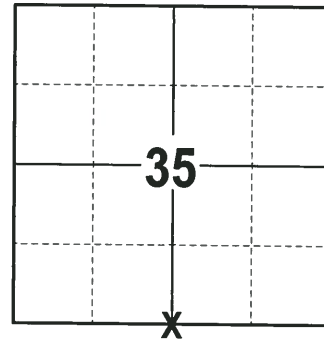
TYPE OF MONUMENT: HARRISON (BROKEN-TOP)
 ADAMS COUNTY COORDINATES, NAD 83 (2007)

N. 287744.783

E. 549290.234

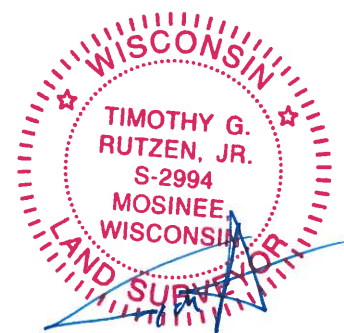
ELEVATION- DATUM

FIELD WORK DATE: 02/07/2018



LOCATION
 (INDICATE CORNER BY "X")

SEAL:



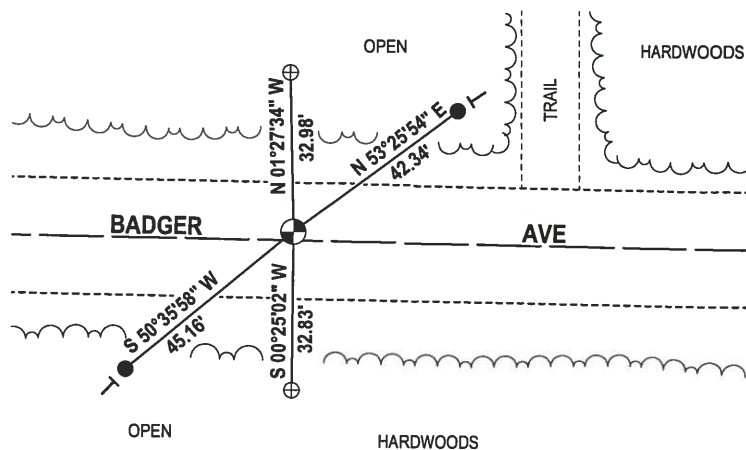
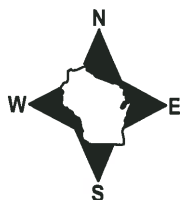
DATA SHOWN HERE ON THIS TIE SHEET IS CORRECT AND COMPLETE TO THE BEST OF MY KNOWLEDGE AND BELIEF.

PROFESSIONAL LAND SURVEYOR

DATE 3-1-18

TIE SKETCH

NOTE: THE CORNER FALLS 2± NORTH OF THE CENTERLINE OF BADGER AVE.

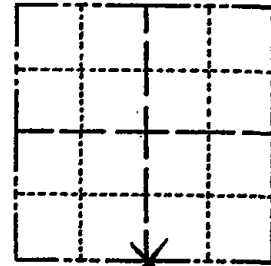


- ⊕ 1.0" O.D. IRON PIPE FOUND
- 3/4" x 18" IRON REBAR SET, 1.50#/FT
- ⊕ HARRISON (BROKEN-TOP) FOUND
- VINYL "T" POST
- ~ EXISTING STEEL FENCE POST

Government Land Corner Certificate

ADAMS County
 TYPE OF MONUMENT: HARRISON STD.
 STATE PLANE COORDINATES: N _____
 E _____
 ELEVATION — M.S.L. DATUM: _____
 THETA ANGLE: _____
 FIELD BOOK: 76 PAGE 4
 DRAWN BY: ROGER NUBER

CORNER NO. 130
 SECTION 35
 TOWN 20
 RANGE 6



LOCATION
(Indicated by 'X')

SEAL:



DATA SHOWN HERE ON
CERTIFIED CORRECT:

Gregory P. Rhinehart
Registered Land Surveyor

DATE: 6/4/79

BASIS FOR MONUMENT LOCATION

Show info such as: History of corner, with reference to Vol. and pg., dates, surveyor; exact description of monument replaced; if location computed, by taped or EDM traverse; landowner remarks, etc. (Use reverse side if necessary)

Set Monument equidistant and on line between adjacent section corners.

No evidence of any previous monumentation was found.

No record of any monumentation subsequent to the original was found.

Ok 4-27-84 SS-DK

TIE SKETCH

Show at least four ties, also fence lines, roads, topo, size and type of witness trees and if off road - best way to arrive at corner.

