

## PUBLIC LAND SURVEY MONUMENT RECORD

TYPE OF MONUMENT: HARRISON (BROKEN-TOP)  
 ADAMS COUNTY COORDINATES, NAD 83 (2007)

N. 287728.030

E. 551929.795

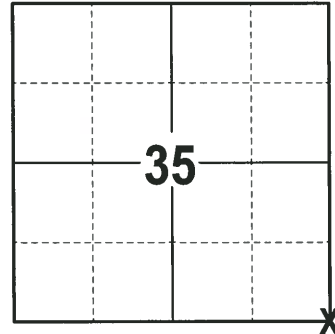
ELEVATION-      DATUM     

FIELD WORK DATE: 02/07/2018

### BASIS FOR MONUMENT LOCATION

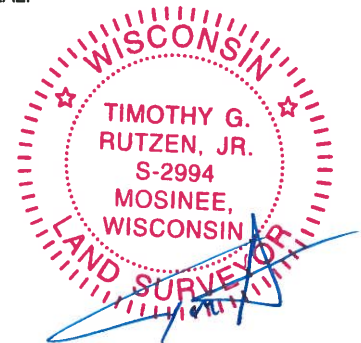
2013 - PLS 1478 RE-DRAFTED HIS OWN TIE SHEET FROM 1979. RHINEHART ACCEPTED THE 1/2" IRON BAR AS THE CORNER. A 1" IRON PIPE WAS ALSO FOUND IN THE INTERSECTION, BUT THE IRON BAR FIT ADJACENT CORNERS BETTER. EXCAVATION WITH A BACKHOE YIELDED NO OTHER EVIDENCE OF ANY MONUMENTATION AT THIS LOCATION. ACCEPTED OLD IRON LOCATION AND RE-SET A HARRISON MONUMENT AND TIED OUT.

2018 - PLS 2994 FOUND A HARRISON MONUMENT WITH A BROKEN-TOP 6" BELOW THE ROAD SURFACE AND 2 TIES. THE MONUMENT AGREES WITH THE EXISTING TIES. ACCEPTED THE HARRISON MONUMENT WITH A BROKEN-TOP AS THE CORNER LOCATION. SET 2 NEW TIES AND MEASURED TO THE TIES.



**LOCATION**  
 (INDICATE CORNER BY "X")

SEAL:



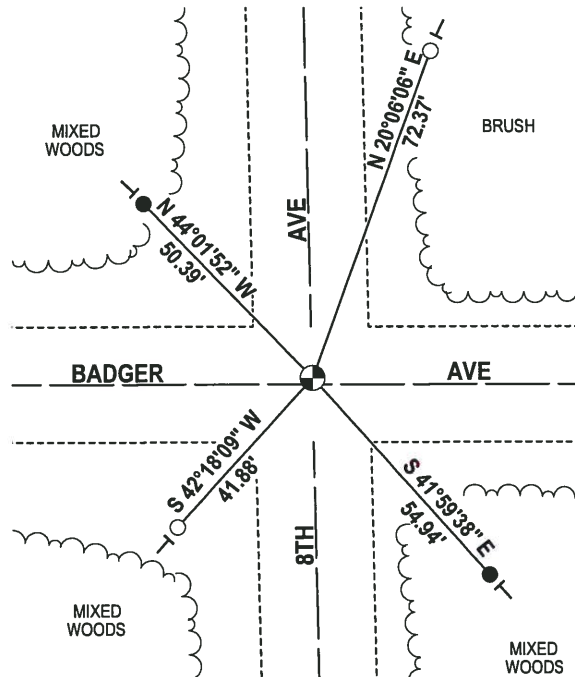
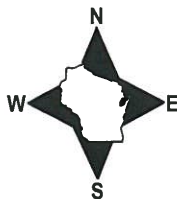
DATA SHOWN HERE ON THIS TIE SHEET IS CORRECT AND COMPLETE TO THE BEST OF MY KNOWLEDGE AND BELIEF.

PROFESSIONAL LAND SURVEYOR

DATE 3-1-18

### - TIE SKETCH -

NOTE: THE CORNER FALLS 1± NORTH OF THE CENTERLINE OF BADGER AVE.



- 3/4" IRON REBAR FOUND
- 3/4" x 18" IRON REBAR SET, 1.50#/FT
- ⊙ HARRISON (BROKEN-TOP) FOUND
- | VINYL "T" POST

