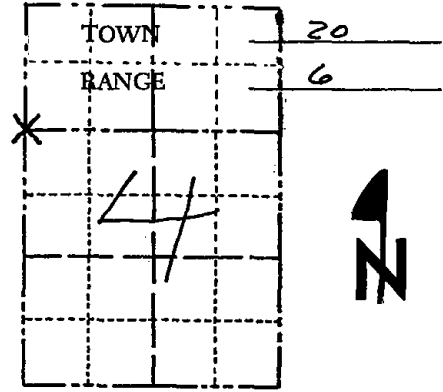


Government Land Corner Certificate

ADAMS County
 TYPE OF MONUMENT: HARRISON MONUMENT
 STATE PLANE COORDINATES: N _____
 E _____
 ELEVATION — M.S.L. DATUM: _____
 THETA ANGLE: _____
 FIELD BOOK: SECT. FILE PAGE _____
 DRAWN BY: G. RHINENART

CORNER NO. 136
 SECTION 4
 TOWN 20
 RANGE 6



LOCATION
 (Indicated by 'X')

SEAL:



BASIS FOR MONUMENT LOCATION

Show info such as: History of corner, with reference to Vol. and pg., dates, surveyor; exact description of monument replaced; if location computed, by taped or EDM traverse; landowner remarks, etc. (Use reverse side if necessary)

Excavated with bache. Found sandstone believed set by M.C. Smith in a resurvey of part of Sec. 4. Lowered stone and set Harrison on top. Location verified by EDM/t-2 traverse.

Stone found when doing the survey for Evelyn Salinger.

See the reverse side for updated map 5-11-84

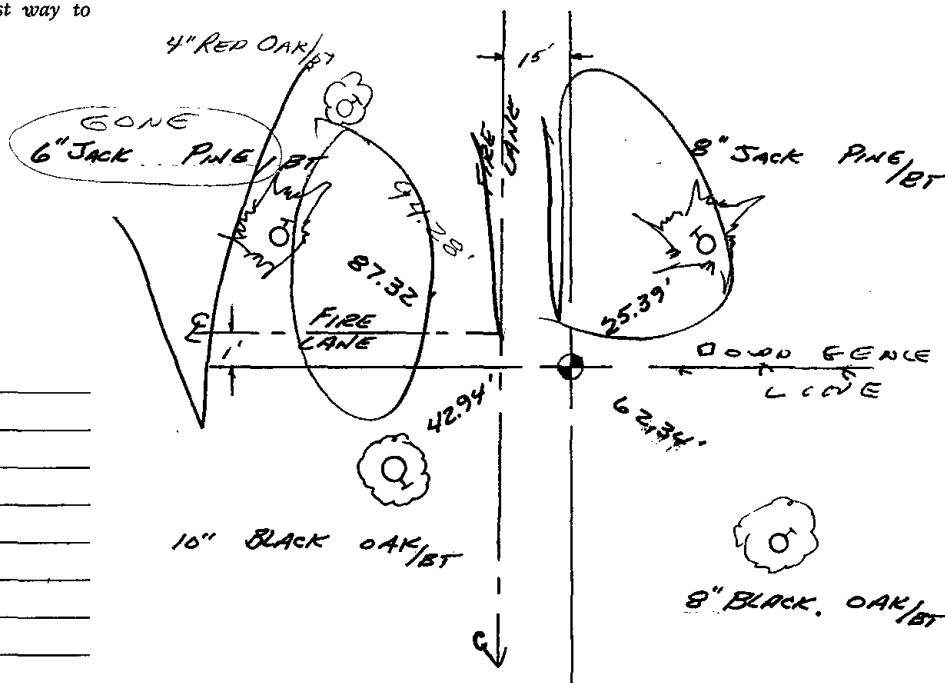
DATA SHOWN HERE ON
 CERTIFIED CORRECT:

Anthony B. Kiedrowski
 Registered Land Surveyor

DATE: 7/5/77

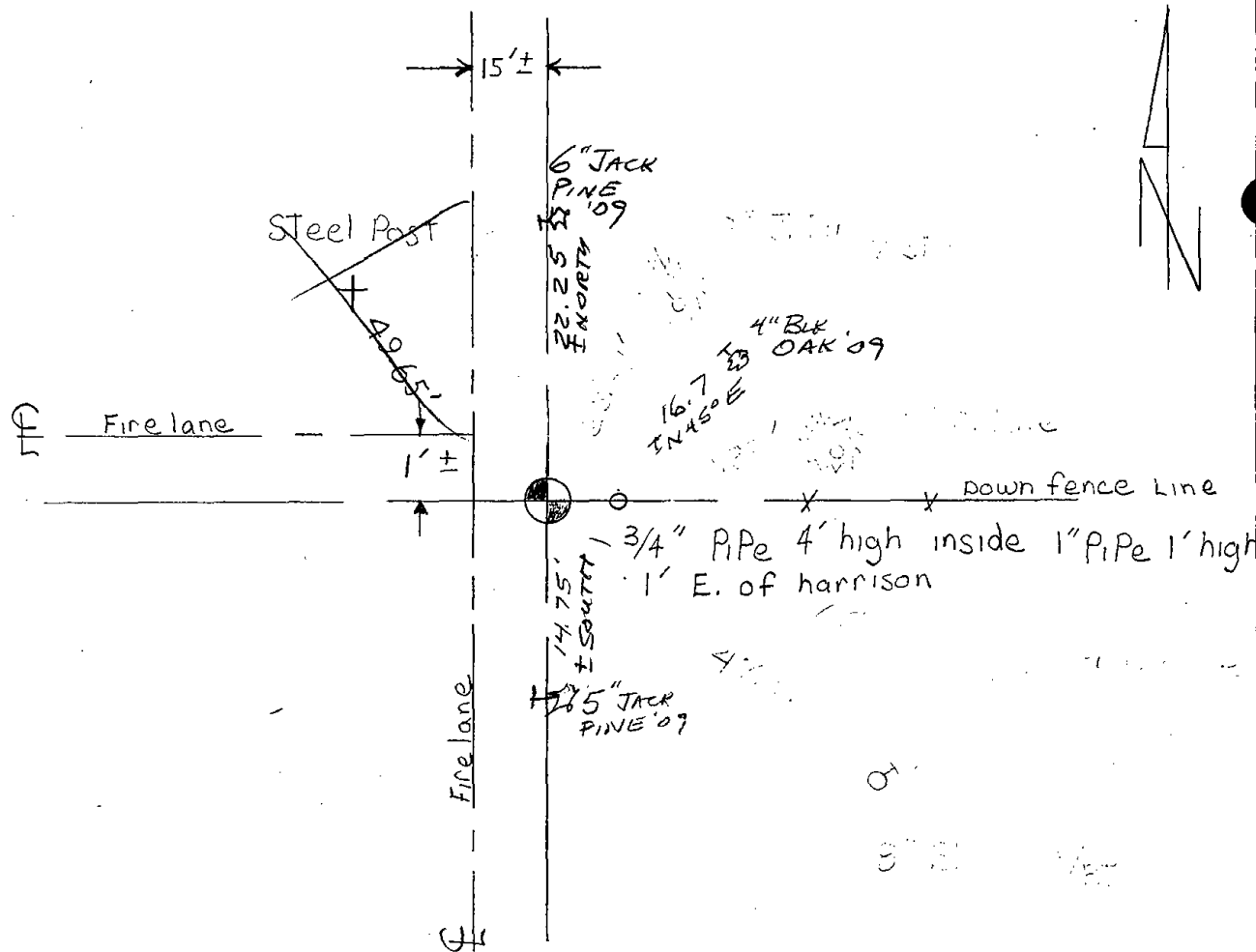
TIE SKETCH

Show at least four ties, also fence lines, roads, topo, size and type of witness trees' and if off road - best way to arrive at corner.



MAINTENANCE RECORD

| Date | Init. | Remarks |
|---------|-------|--------------------|
| 8-15-79 | RN-RK | Mon. O.K. - RETIED |
| | | |
| | | |
| | | |
| | | |

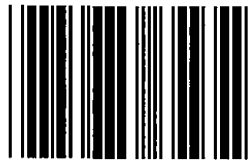


Map was updated on 5-11-84 2 new ties were set SS-DK

OK 3-7-94 JG-GR

2-NEW TIES, MON. OK 3-1-99-JG

3 NEW TIES 3-13-09 SS



* 1 3 7 *

137

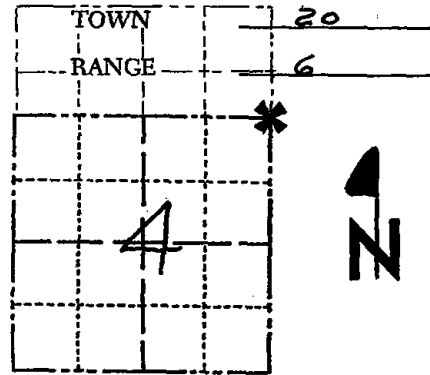
ADAMS COUNTY

CORNER NO. 574

Survey Monument Record

SECTION 4

TYPE OF MONUMENT: Harrison standard



STATE PLANE COORDINATES: N _____

E _____

ELEVATION — M.S.L. DATUM: _____

THETA ANGLE: _____

FIELD BOOK: _____ PAGE _____

BASIS FOR MONUMENT LOCATION

(Use reverse side if necessary)

Show info such as: History of corner, with reference to Vol. and pg, dates, surveyor; exact description of monument replaced; if location computed, by taped or EDM traverse; landowner remarks, etc.

SEAL:

Set Corner proportionately and on line from adjacent corners. Excavation and extensive search yielded no conclusive evidence.



Mon. O.K. - 1' BELOW SURFACE 3-23-79 R.N.-OW

see the reverse side for updated map 5-11-84

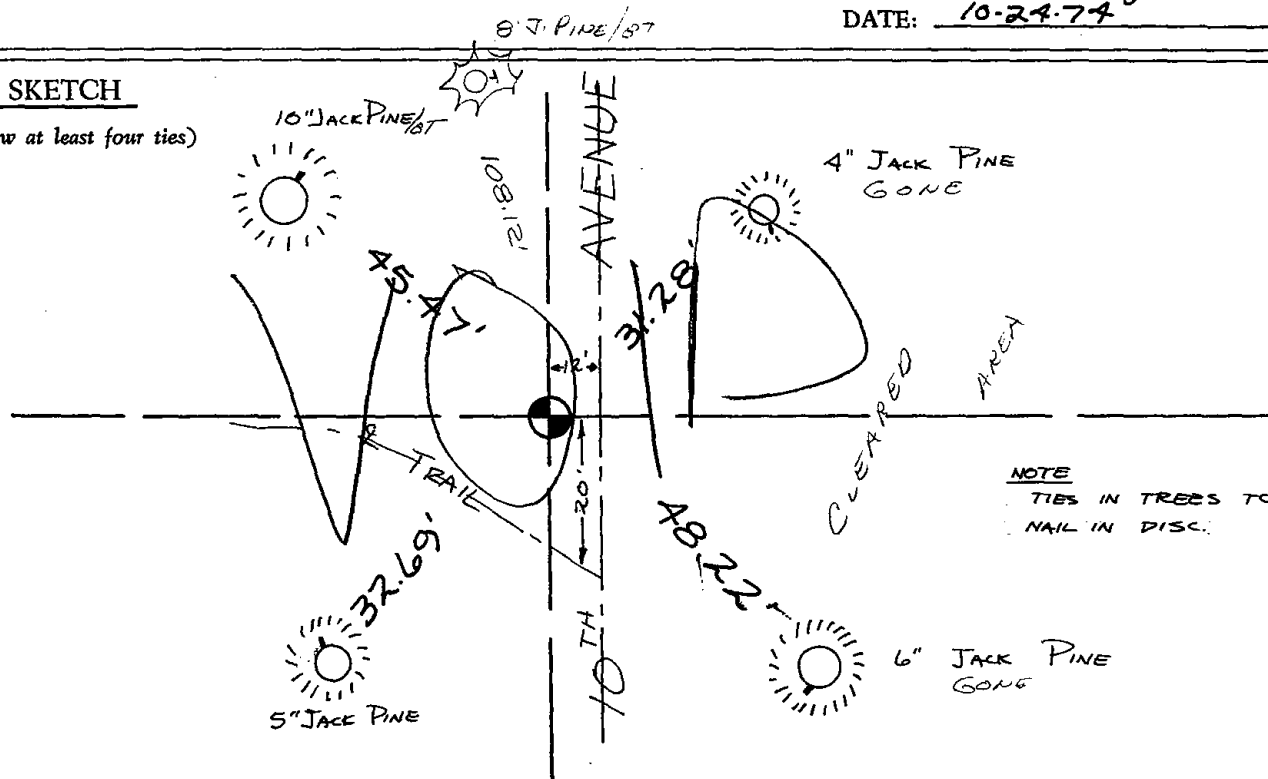
CERTIFIED CORRECT:

Dale C. Hagen
Registered Land Surveyor

DATE: 10-24-74

TIE SKETCH

(Show at least four ties)



6" WHITE PINE '09
NOT BLAZED - GONE
W. PINE IN VICINITY

15" J. Pine/
DND SIGN BT

DND SIGN
10" J. Pine/BT

45.47'
DND

108.12'

10TH AVE.

PINE PLANTATION

Cleared Area

32.05' Steel Post DISTURBED

E TRAIL

20'

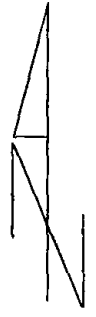
56.9
56" J. PINE
24 '09
5" J. Pine
GONE 99

12'±

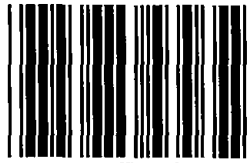
64.8

Cleared Area

26'± 5" JACK PINE '09



- Map updated 5-11-84 SS-DK
- OK. 2-23-89 SS
- 1-GONE 3-7-99 JG-GR
- OK 2-16-99-JG-SS
- OK, 2-27-04-JG
- 3 NEW TREES 3-13-09 SS



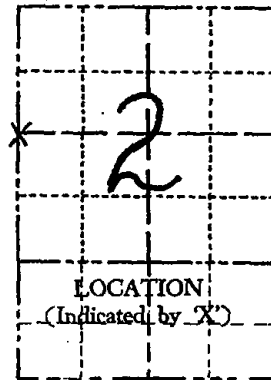
* 1 3 8 *

138

Government Land Corner Certificate

ADAMS County
 TYPE OF MONUMENT: HARRISON
 STATE PLANE COORDINATES: N _____
 E _____
 ELEVATION — M.S.L. DATUM: _____
 THETA ANGLE: _____
 FIELD BOOK: 69 (102) PAGE 112 (109)
 DRAWN BY: L. COOMBS

CORNER NO. 138
 SECTION 2
 TOWN 20
 RANGE 6



BASIS FOR MONUMENT LOCATION

Show info such as: History of corner, with reference to Vol. and pg., dates, surveyor; exact description of monument replaced; if location computed, by taped or EDM traverse; landowner remarks, etc. (Use reverse side if necessary)

Scraped area with front end bucket. Found 6x6x18" squared sandstone next to remains of 6" dia completely rotted fence post. Accepted the stone as the corner and replaced it with a Harrison monument. Placed the stone in the ground immediately north of the Harrison. Can find no record of stone. Location verified by EDM T-2 traverse of the area.

SEAL:



DATA SHOWN HERE ON CERTIFIED CORRECT:

Anthony B. Kiedrowski
 Registered Land Surveyor

DATE: 8/4/81

Found stone needs a Harrison ties are ok 7-9-84 GR-DK

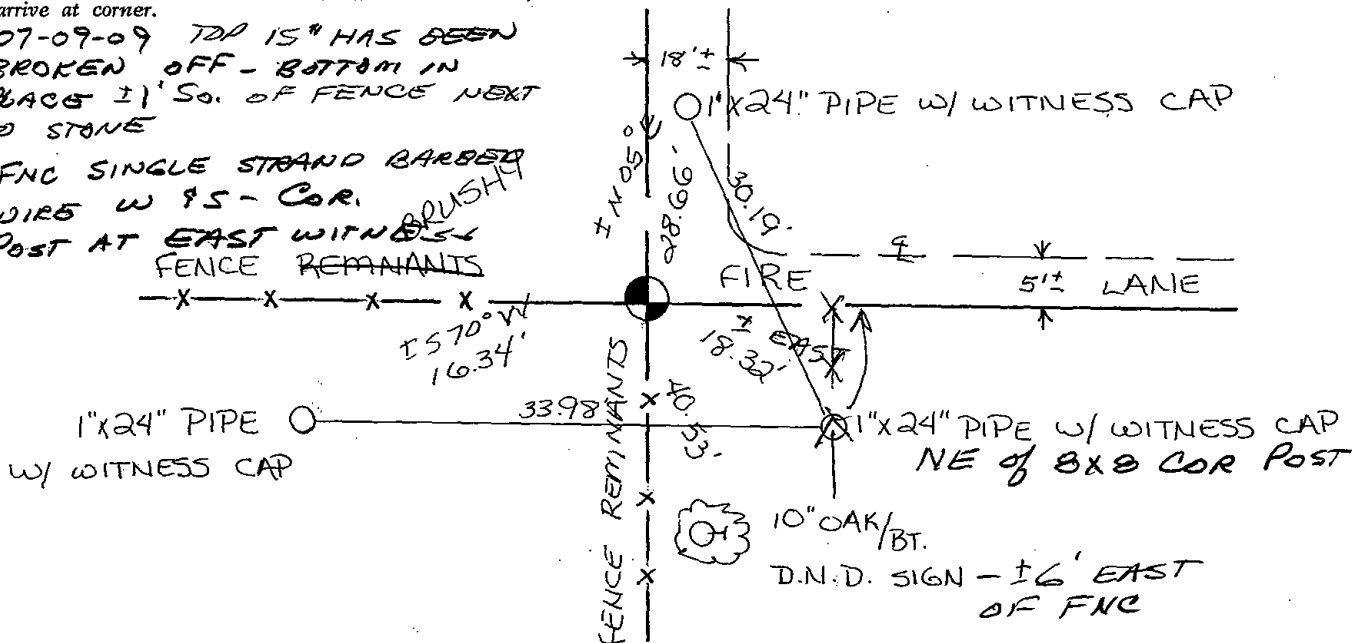
Harrison set on 7-16-84 using existing ties Mk-DK

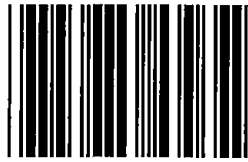
TIE SKETCH

Show at least four ties, also fence lines, roads, topo, size and type of witness trees and if off road - best way to arrive at corner.

07-09-09 TDP 15" HAS BEEN BROKEN OFF - BOTTOM IN PLACE 21' So. OF FENCE NEXT TO STONE

FNC SINGLE STRAND BARBED WIRE W 95 - COR. POST AT EAST WITNESS BRUSH FENCE REMNANTS





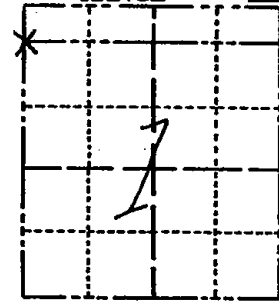
* 1 3 9 *

139

Government Land Corner Certificate

ADAMS County
 TYPE OF MONUMENT: HARRISON
 STATE PLANE COORDINATES: N _____
 E _____
 ELEVATION — M.S.L. DATUM: _____
 THETA ANGLE: _____
 FIELD BOOK: 86 PAGE 97
 DRAWN BY: NJ

CORNER NO. 139
 SECTION 1
 TOWN 20
 RANGE 6



LOCATION
 (Indicated by 'X')

BASIS FOR MONUMENT LOCATION

Show info such as: History of corner, with reference to Vol. and pg., dates, surveyor; exact description of monument replaced; if location computed, by taped or EDM traverse; landowner remarks, etc. (Use reverse side if necessary)

No record of a-y resurveys. Could find no evidence of the original or subsequent monument. This corner is set on a straight line between the west 1/4 corner and the NW corner of this section and in proportion to the original notes.

Ok 7-9-84 GR-DK

SEAL:



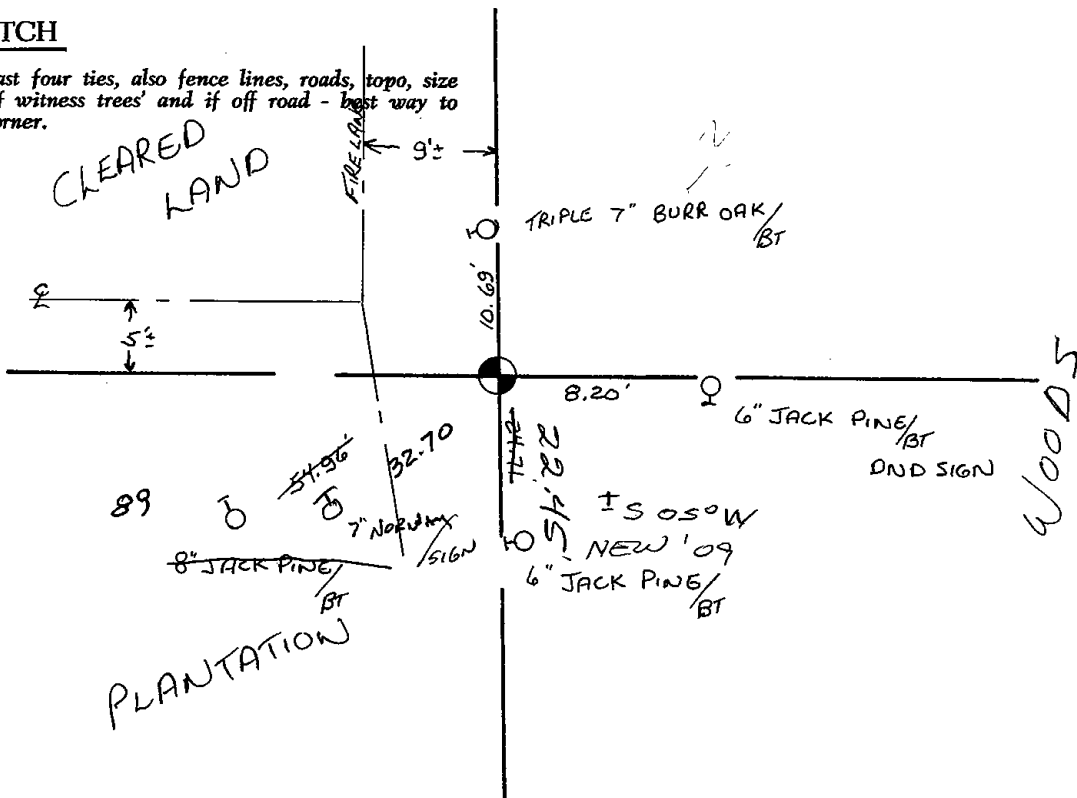
DATA SHOWN HERE ON
 CERTIFIED CORRECT:

Anthony B. Kiedrowski
 Registered Land Surveyor

DATE: 1/5/81

TIE SKETCH

Show at least four ties, also fence lines, roads, topo, size and type of witness trees and if off road - best way to arrive at corner.





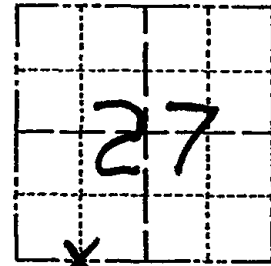
* 1 4 1 *

141

Government Land Corner Certificate

Adams County
 TYPE OF MONUMENT: 2" x 24" I. P.
 STATE PLANE COORDINATES: N _____
 E _____
 ELEVATION — M.S.L. DATUM: _____
 THETA ANGLE: _____
 FIELD BOOK: 86 PAGE 109
 DRAWN BY: T.H.

CORNER NO. SW140 Cor.
 SECTION 27
 TOWN 20
 RANGE 6



LOCATION
(Indicated by 'X')

SEAL:

BASIS FOR MONUMENT LOCATION

Show info such as: History of corner, with reference to Vol. and pg., dates, surveyor; exact description of monument replaced; if location computed, by taped or EDM traverse; landowner remarks, etc. (Use reverse side if necessary)

Set on line half way between section and quarter corner.



DATA SHOWN HERE ON
CERTIFIED CORRECT:

AB Kiedrowski
Registered Land Surveyor
1/2/81

DATE: _____

TIE SKETCH

Show at least four ties, also fence lines, roads, topo, size and type of witness trees and if off road - best way to arrive at corner.

