

02 SECTION 20 TOWN 07 RANGE

ADAMS COUNTY

COUNTY CORNER NO: 11

ROMPORTOL ID: 42007029000

PUBLIC LAND SURVEY MONUMENT RECORD

TYPE OF MONUMENT: HARRISON
ADAMS COUNTY COORDINATES, NAD 83 (2007)

N. 320761.021

E. 583080.839

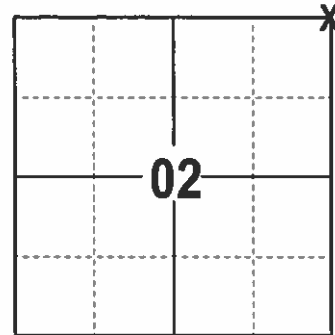
ELEVATION- DATUM

FIELD WORK DATE: 12/29/2016

BASIS FOR MONUMENT LOCATION

1978 - PLS 878 NO EVIDENCE OF PREVIOUS MONUMENTATION OR RECORDS OF ANY RESURVEYS.
SET A HARRISON AT RECORD DISTANCE (2167.44') WEST OF THE SW CORNER SECTION 36-21-7, AND ON LINE BETWEEN THE SW AND S1/4 CORNERS OF SECTION 36-21-7.

2017 - PLS 2994 FOUND EXISTING HARRISON 12"± BELOW THE SURFACE, FOUND NO TIES OR EXISTING WITNESSES. ACCEPTED HARRISON AND SET 4 NEW TIES.



LOCATION
(INDICATE CORNER BY "X")

SEAL:



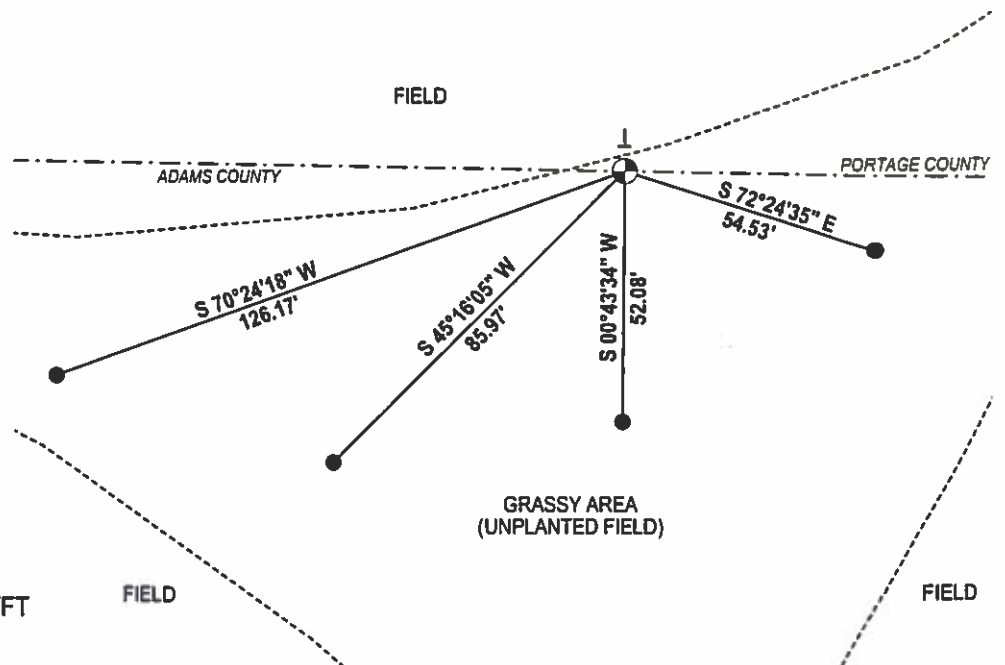
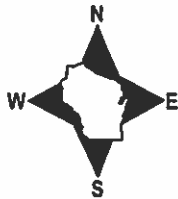
DATA SHOWN HERE ON THIS TIE SHEET IS CORRECT AND COMPLETE TO THE BEST OF MY KNOWLEDGE AND BELIEF.

PROFESSIONAL LAND SURVEYOR

DATE 3/7/17

TIE SKETCH

NOTE: ALL TIES ARE SET 18"± BELOW THE SURFACE

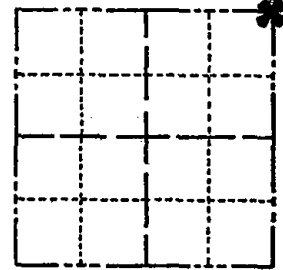


- 3/4" X 18" IRON REBAR SET, 1.50#/FT
- ⊕ HARRISON FOUND
- VINYL "T" POST

Government Land Corner Certificate

ADAMS County
 TYPE OF MONUMENT: HARRISON STD.
 STATE PLANE COORDINATES: N _____
 E _____
 ELEVATION — M.S.L. DATUM: _____
 THETA ANGLE: _____
 FIELD BOOK: 60 PAGE 52
 DRAWN BY: SCOTT SORENSEN

CORNER NO. 11
 SECTION 2
 TOWN 20
 RANGE 7



LOCATION
(Indicated by 'X')

BASIS FOR MONUMENT LOCATION

Show info such as: History of corner, with reference to Vol. and pg., dates, surveyor; exact description of monument replaced; if location computed, by taped or EDM traverse; landowner remarks, etc. (Use reverse side if necessary)

Set at record distance (2167.44') West of SW corner of Section 36-21-7 and on line between SW corner of Section 36-21-7 and $\frac{3}{4}$ corner of Section 36-21-7.

No evidence of any previous monumentation found, no record of any resurveys.

SEAL:



1 new 5-2-84 SS-DK

1-GONE, 1-NEW TIE 3-28-94 JG-GR

1-GONE, 1-NEW, 3-2-99 JG-SS

DATA SHOWN HERE ON
CERTIFIED CORRECT:

Anthony B. Kiedrowski
Registered Land Surveyor

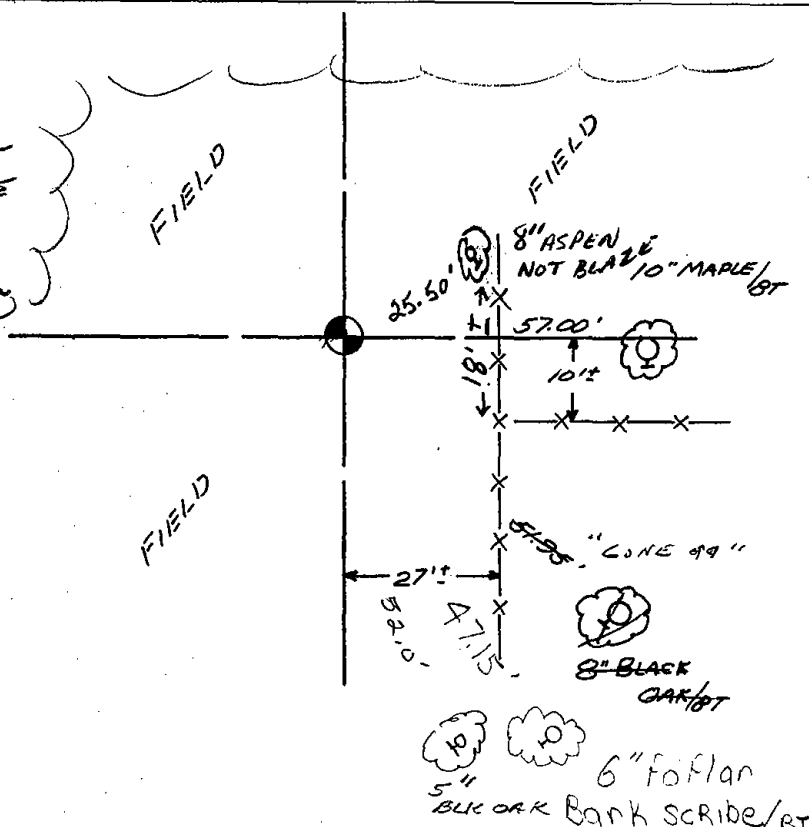
DATE: 6/8/78

TIE SKETCH

Show at least four ties, also fence lines, roads, topo, size and type of witness trees and if off road - best way to arrive at corner.

No TIES REMAIN - FO. 2"X2" ANGLE IRON 1MM. E. of MON. NOTHING ELSE AVAILABLE 9-1-04 SS

" 4-13-09 SS - LANDOWNER AWARE AND PRESERVES LOCATION - PORTISSE Co. Mon. TO EAST MAY HAVE BEEN DISTURBED "



MAINTENANCE RECORD

Date	Init.	Remarks