

06  
SECTION

20  
TOWN

07  
RANGE

# ADAMS COUNTY

COUNTY CORNER NO: 15

ROMPORTOL ID: 42007062000

## PUBLIC LAND SURVEY MONUMENT RECORD

TYPE OF MONUMENT: HARRISON  
ADAMS COUNTY COORDINATES, NAD 83 (2007)

N. 316878.429

E. 561998.739

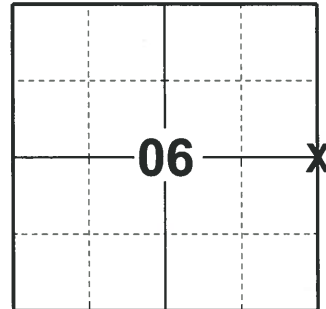
ELEVATION-      DATUM     

FIELD WORK DATE: 02/12/2020

### BASIS FOR MONUMENT LOCATION

1983 - PLS 1444 THIS CORNER WAS SET ON LINE AND BY SINGLE PROPORTIONATE DISTANCE BETWEEN ADJACENT SECTION CORNERS. DID NOT EXCAVATE AT THIS LOCATION BECAUSE DITCHING WOULD HAVE DESTROYED ANY EVIDENCE.

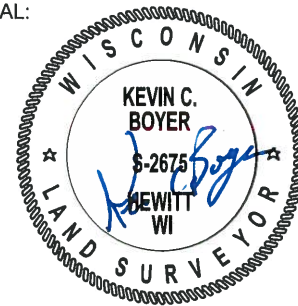
2020 - PLS 2675 FOUND HARRISON MONUMENT 6"± BELOW THE GROUND AND 1 TIE THAT HAD BEEN TIPPED. THE MONUMENT AGREES WITH THE TIE. ACCEPTED THE HARRISON MONUMENT AS THE CORNER LOCATION. SET 3 NEW TIES AND MEASURED TO THE EXISTING TIE.



### LOCATION

(INDICATE CORNER BY "X")

SEAL:



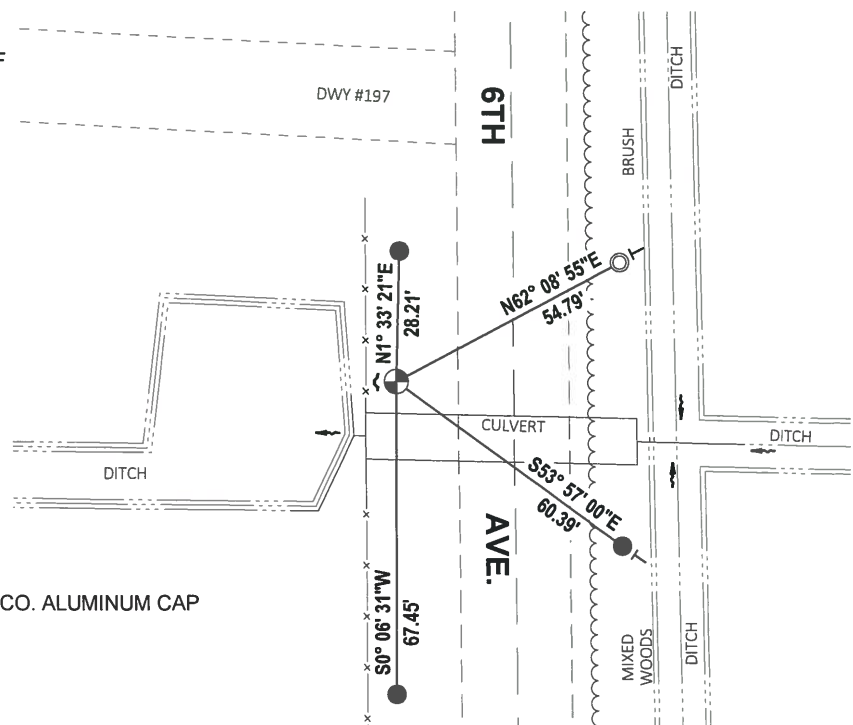
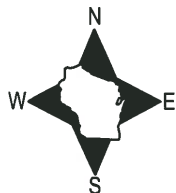
DATA SHOWN HERE ON THIS TIE SHEET IS CORRECT AND COMPLETE TO THE BEST OF MY KNOWLEDGE AND BELIEF.

PROFESSIONAL LAND SURVEYOR

DATE 3/9/2020

### - TIE SKETCH

NOTE1: THE CORNER LANDS 25'± WEST OF THE CENTERLINE OF 6TH AVE.  
NOTE2: TIES ALONG FENCE ARE 1'± EAST OF THE 8' TALL FENCE.



- SET 3/4" x 18" IRON REBAR, 1.50#/FT
- FOUND 1-1/4" O.D. IRON PIPE W/ADAMS CO. ALUMINUM CAP
- ⊕ FOUND HARRISON MONUMENT
- ✓ FIBERGLASS POST
- VINYL "T" POST

# Government Land Corner Certificate

ADAMS County

TYPE OF MONUMENT: Harrison

STATE PLANE COORDINATES: N \_\_\_\_\_  
E \_\_\_\_\_

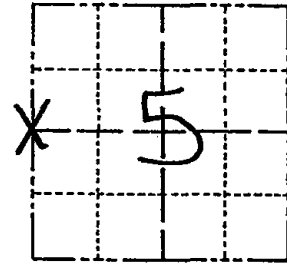
ELEVATION — M.S.L. DATUM: \_\_\_\_\_

THETA ANGLE: \_\_\_\_\_

FIELD BOOK: 91 PAGE 73

DRAWN BY: SSH

CORNER NO. 15  
SECTION 5  
TOWN 20  
RANGE 7



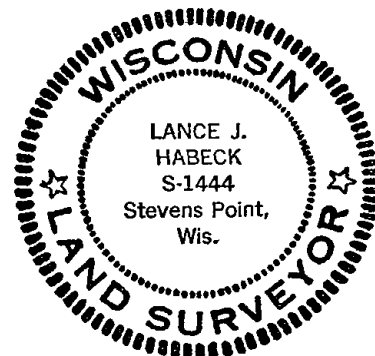
LOCATION  
(Indicated by 'X')

## BASIS FOR MONUMENT LOCATION

Show info such as: History of corner, with reference to Vol. and pg., dates, surveyor; exact description of monument replaced; if location computed, by taped or EDM traverse; landowner remarks, etc. (Use reverse side if necessary)

This corner was set on line and by single proportionate distance between adjacent Section corners. Did not excavate at this location because ditching would have destroyed any evidence.

SEAL:



DATA SHOWN HERE ON  
CERTIFIED CORRECT:

*Lance J. Habek*  
Registered Land Surveyor

DATE: 4/29/83

## TIE SKETCH

Show at least four ties, also fence lines, roads, topo, size and type of witness trees and if off road - best way to arrive at corner.

