

## PUBLIC LAND SURVEY MONUMENT RECORD

TYPE OF MONUMENT: HARRISON  
ADAMS COUNTY COORDINATES, NAD 83 (2007)

N. 316949.855

E. 572650.691

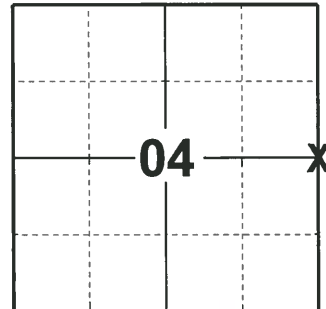
ELEVATION- - - - DATUM - - - -

FIELD WORK DATE: 02/11/2020

### BASIS FOR MONUMENT LOCATION

1973 - PLS 878 LOCATION WAS DETERMINED BY TRAVERSING THE SOUTH HALF OF SECTION. NO EXCAVATION DONE BECAUSE OF NEW ROAD CONSTRUCTION AND ANY MARK APPARENTLY DESTROYED.

2020 - PLS 2675 FOUND HARRISON MONUMENT 6"± BELOW THE ROAD SURFACE, 1 TIE, AND 1 WITNESS. THE MONUMENT AGREES WITH BOTH THE TIE AND WITNESS. ACCEPTED THE HARRISON MONUMENT AS THE CORNER LOCATION. SET 3 NEW TIES AND MEASURED TO THE EXISTING TIE AND WITNESS.



LOCATION  
(INDICATE CORNER BY "X")

SEAL:



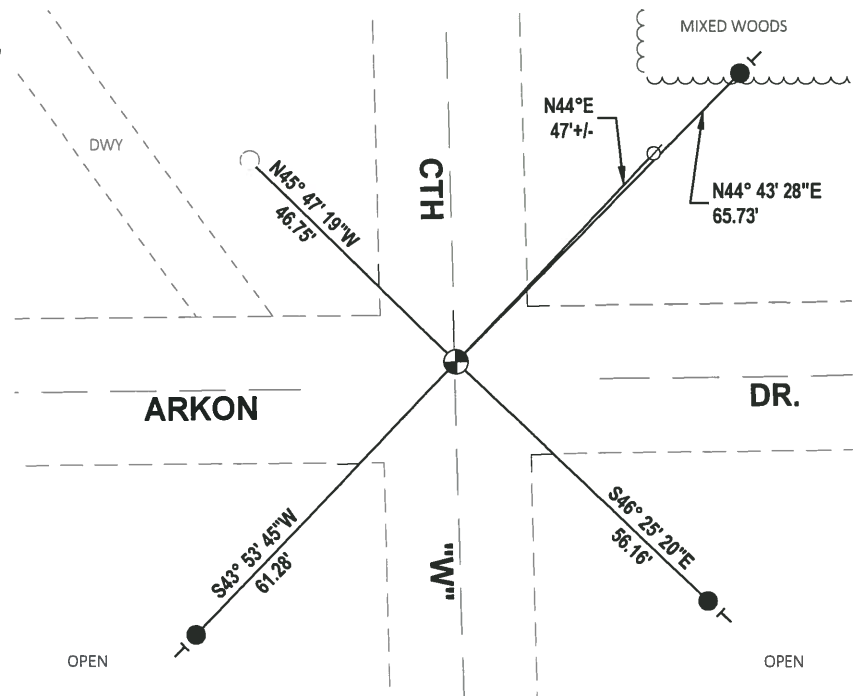
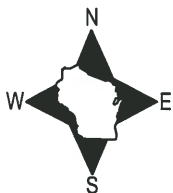
DATA SHOWN HERE ON THIS TIE SHEET IS CORRECT AND COMPLETE TO THE BEST OF MY KNOWLEDGE AND BELIEF.

PROFESSIONAL LAND SURVEYOR

DATE 3/9/2020

### - TIE SKETCH

NOTE: THE CORNER LANDS 3.5'± NORTH OF THE INTERSECTION OF CTH "W" AND ARKON DR.



- SET 3/4" x 18" IRON REBAR, 1.50#/FT
- FOUND 3/4" IRON ROD
- FOUND HARRISON MONUMENT
- ⊘ WITNESS POWER POLE
- VINYL "T" POST

ADAMS COUNTY

Survey Monument Record

TYPE OF MONUMENT: 30" HARRISON

STATE PLANE COORDINATES: N \_\_\_\_\_  
E \_\_\_\_\_

ELEVATION — M.S.L. DATUM: \_\_\_\_\_

THETA ANGLE: \_\_\_\_\_

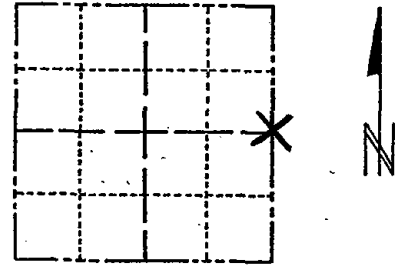
FIELD BOOK: 107 PAGE 32

CORNER NO. 143 (17)

SECTION 4

TOWN 20

RANGE 7



LOCATION  
(Indicated by 'X')

SEAL:



BASIS FOR MONUMENT LOCATION

(Use reverse side if necessary)

Show info such as: History of corner, with reference to Vol. and pg, dates, surveyor; exact description of monument replaced; if location computed, by taped or EDM traverse; landowner remarks, etc.

Location was determined by traversing the south half of section. No excavating done because of new road construction and any mark apparently destroyed.

2-GONE, 2-NEW TIES 3-28-94 JG-GR  
1-GONE, 4-LEFT 2-22-99 - JG  
2 NEW TIES 12-10-09 SS  
FD MAG-4-18-09 SS

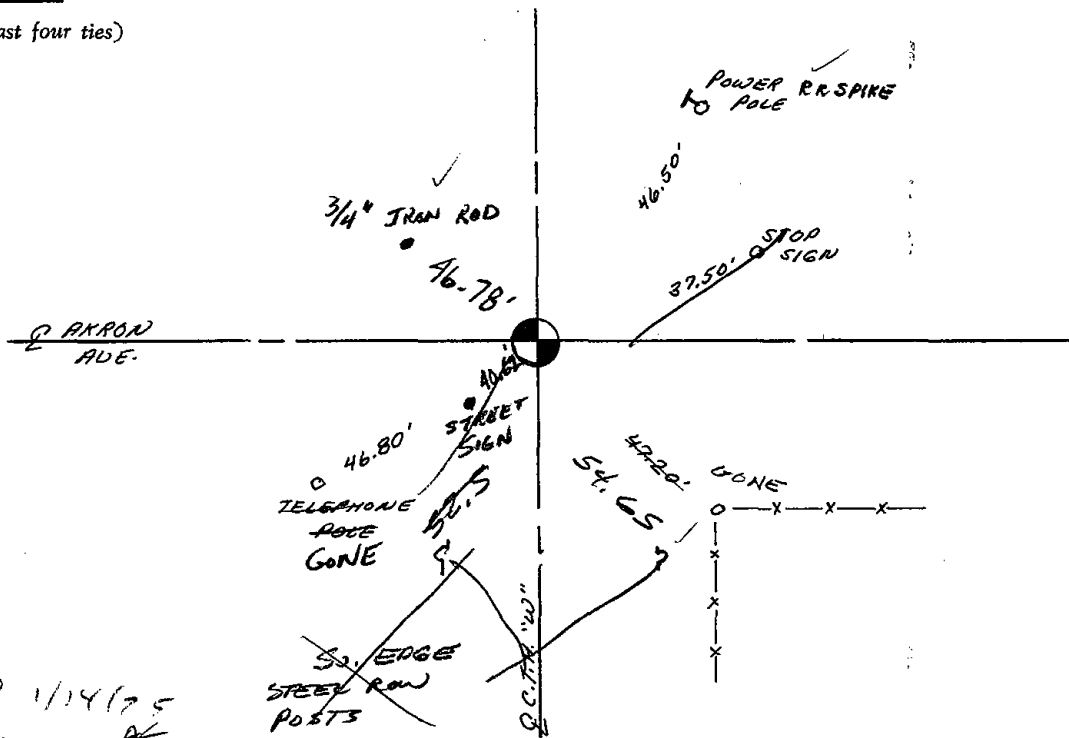
CERTIFIED CORRECT:

*Anthony B. Kiedrowski*  
Registered Land Surveyor

DATE: 1-27-73

TIE SKETCH

(Show at least four ties)



REvised 1/14/75  
AK