

03
SECTION

20
TOWN

07
RANGE

ADAMS COUNTY

COUNTY CORNER NO.: 18

ROMPORTOL ID: 42007032000

PUBLIC LAND SURVEY MONUMENT RECORD

TYPE OF MONUMENT: HARRISON
ADAMS COUNTY COORDINATES, NAD 83 (2007)

N. 316893.336

E. 577885.997

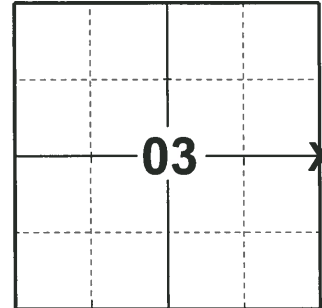
ELEVATION- - - - - DATUM - - - - -

FIELD WORK DATE: 12/09/19

BASIS FOR MONUMENT LOCATION

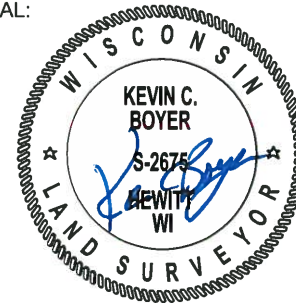
1979 - PLS 1478 SET CORNER AT THE INTERSECTION OF CENTERLINES IN EXCAVATION BY SURVEYOR BASLER (PLS-1167) THIS LOCATION BEST "FITS" WITH COLLATERAL EVIDENCE IN THE AREA. EXCAVATION WITH BACKHOE BY SURVEYOR BASLER YIELDED NEITHER THE ORIGINAL MONUMENT NOR ANY SUBSEQUENT REMONUMENTATION.

2019 - PLS 2675 FOUND HARRISON MONUMENT 4"± BELOW THE ROAD SURFACE AND 1 TIE. THE MONUMENT AGREES WITH THE TIE. ACCEPTED THE HARRISON MONUMENT AS THE CORNER LOCATION. SET 4 NEW TIES AND MEASURED TO THE EXISTING TIE.



LOCATION
(INDICATE CORNER BY "X")

SEAL:



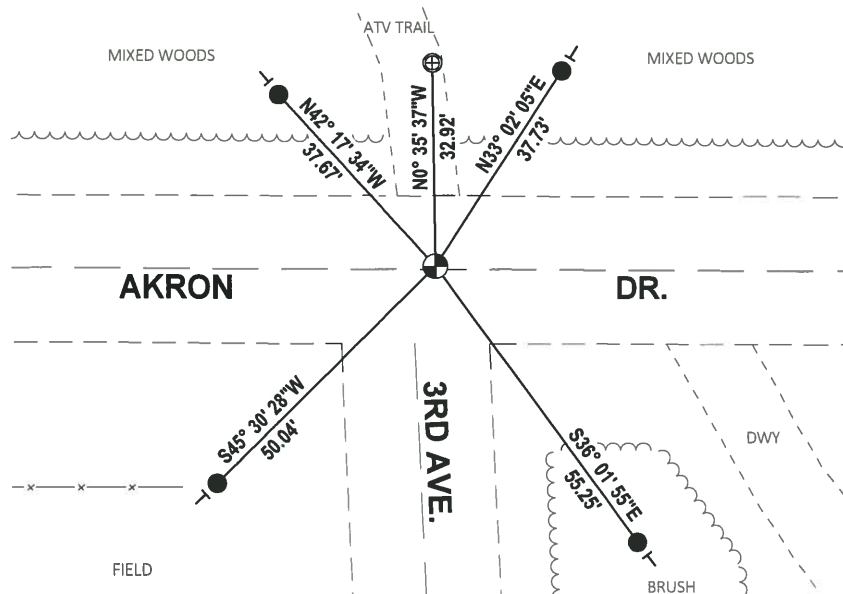
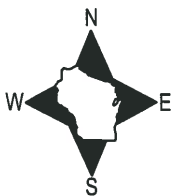
DATA SHOWN HERE ON THIS TIE SHEET IS CORRECT AND COMPLETE TO THE BEST OF MY KNOWLEDGE AND BELIEF.

PROFESSIONAL LAND SURVEYOR

DATE 3/9/2020

- TIE SKETCH

NOTE: THE CORNER LANDS 0.5'± NORTH AND 4'± EAST OF THE INTERSECTION OF AKRON DR. AND 3RD AVE.

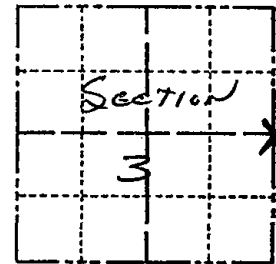


- SET 3/4" x 18" IRON REBAR, 1.50#/FT
- ⊕ FOUND 1" O.D. IRON PIPE
- ⊙ FOUND HARRISON MONUMENT
- VINYL "T" POST

Government Land Corner Certificate

ADAMS County
 TYPE OF MONUMENT: HARRISON
 STATE PLANE COORDINATES: N _____
 E _____
 ELEVATION — M.S.L. DATUM: _____
 THETA ANGLE: _____
 FIELD BOOK: 60 PAGE 137
 DRAWN BY: D. WALLOCH

CORNER NO. 18¹⁸
 SECTION 3
 TOWN 20
 RANGE 7



LOCATION
(Indicated by 'X')

BASIS FOR MONUMENT LOCATION

Show info such as: History of corner, with reference to Vol. and pg., dates, surveyor; exact description of monument replaced; if location computed, by taped or EDM traverse; landowner remarks, etc. (Use reverse side if necessary)

Set Corner at the intersection of centerlines in excavation by Surveyor Basler (RLS-1167).

This location best "fits" with collateral evidence in the area.

Excavation with backhoe by Surveyor Basler yielded neither the original monument nor any subsequent remonumentation.

1 gone 1 new 4-30-84 SS-DK

SEAL:



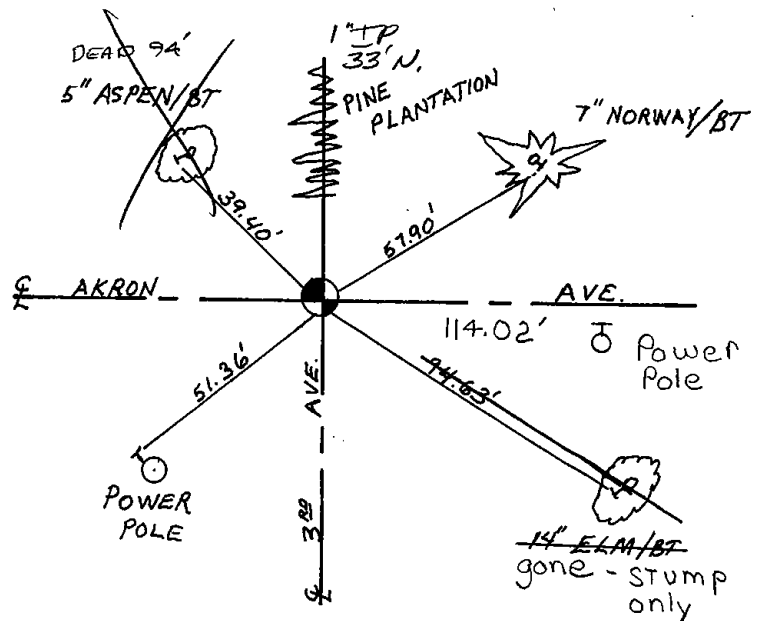
DATA SHOWN HERE ON
CERTIFIED CORRECT:

Gregory P. Rhinehart
Registered Land Surveyor

DATE: 4-30-79

TIE SKETCH

Show at least four ties, also fence lines, roads, topo, size and type of witness trees' and if off road - best way to arrive at corner.



MAINTENANCE RECORD

Date	Init.	Remarks
19 Jun 94	JG-CR	OK
2-22-99	JG	OK
9-1-04	SS	OK
4-13-09	SS	OK

NOTE: TIES TO NAIL & DISC.