

06
SECTION

20
TOWN

07
RANGE

ADAMS COUNTY

COUNTY CORNER NO: 22

ROMPORTOL ID: 42007060020

PUBLIC LAND SURVEY MONUMENT RECORD

TYPE OF MONUMENT: HARRISON (BROKEN-TOP)

ADAMS COUNTY COORDINATES, NAD 83 (2007)

N. 314181.415

E. 559373.223

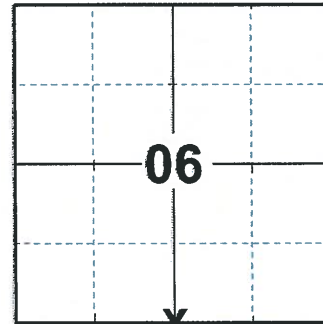
ELEVATION- _____ DATUM _____

FIELD WORK DATE: 03/04/2020

BASIS FOR MONUMENT LOCATION

1983 - PLS 1444 THIS CORNER WAS SET BY SINGLE PROPORTIONATE MEASURE BETWEEN ADJACENT SECTION CORNERS. NO EVIDENCE OF PREVIOUS CORNERS WAS FOUND.

2020 - PLS 2675 FOUND A HARRISON (BROKEN-TOP) MONUMENT FLUSH WITH THE GROUND SURFACE AND 1 TIE. THE MONUMENT AGREES WITH THE TIE. ACCEPTED THE HARRISON (BROKEN-TOP) MONUMENT AS THE CORNER LOCATION. SET 3 NEW TIES AND MEASURED TO THE EXISTING TIE.



LOCATION

(INDICATE CORNER BY "X")

SEAL:



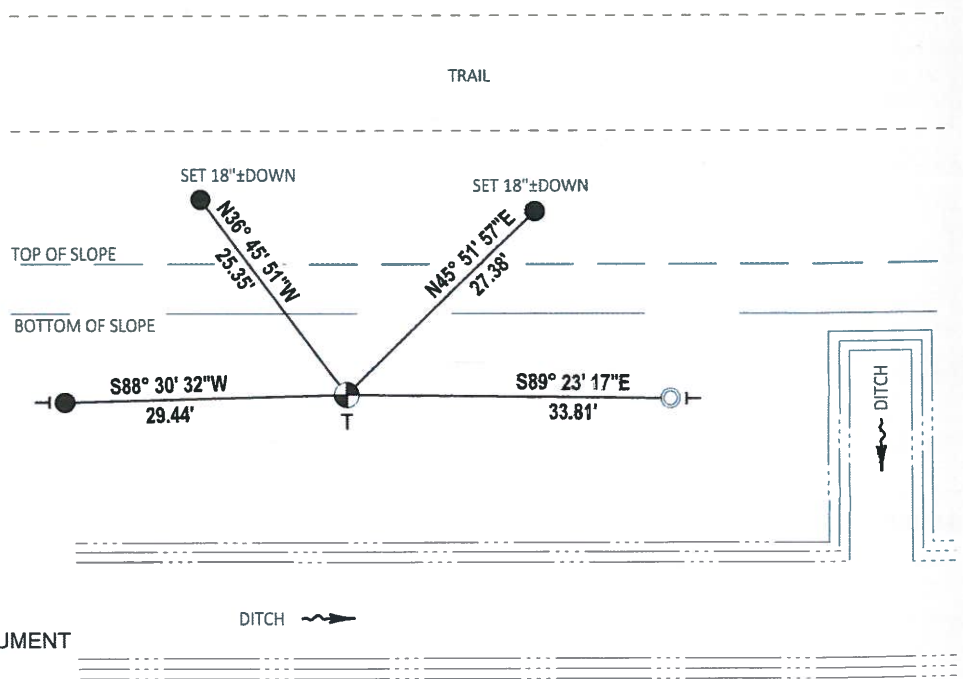
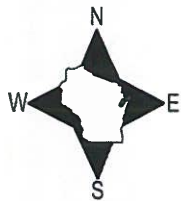
DATA SHOWN HERE ON THIS TIE SHEET IS CORRECT AND COMPLETE TO THE BEST OF MY KNOWLEDGE AND BELIEF.

PROFESSIONAL LAND SURVEYOR

DATE 3/25/2020

TIE SKETCH

NOTE: THE CORNER LANDS 175± WEST OF THE CENTERLINE OF THE DITCH GOING NORTH-SOUTH.



- SET 3/4" x 18" IRON REBAR, 1.50#/FT
- FOUND 1-1/4" O.D. IRON PIPE
- ⊙ FOUND HARRISON (BROKEN-TOP) MONUMENT
- VINYL "T" POST

Government Land Corner Certificate

ADAMS County

TYPE OF MONUMENT: HARRISON

STATE PLANE COORDINATES: N _____
E _____

ELEVATION — M.S.L. DATUM: _____

THETA ANGLE: _____

FIELD BOOK: 91 PAGE 80

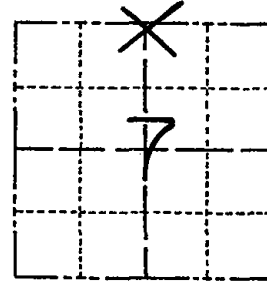
DRAWN BY: S.J.H.

CORNER NO. 22

SECTION 7

TOWN 20

RANGE 7



LOCATION
(Indicated by 'X')

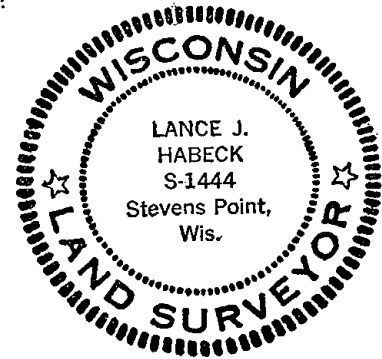
BASIS FOR MONUMENT LOCATION

Show info such as: History of corner, with reference to Vol. and pg., dates, surveyor; exact description of monument replaced; if location computed, by taped or EDM traverse; landowner remarks, etc. (Use reverse side if necessary)

This corner was set by single proportionate measure between adjacent Section corners. No evidence of previous corners was found.

ALL OK 3-28-94, JG-6R
OK 2-22-99 - JG

SEAL:



DATA SHOWN HERE ON
CERTIFIED CORRECT:

Lance J. Habeck
Registered Land Surveyor

DATE: 5/18/83

filed for record this 8th
day of JUNE 1983
per 59.60 Wisconsin Statutes.
D. Rhinehart
ADAMS COUNTY SURVEYOR

TIE SKETCH

Show at least four ties, also fence lines, roads, topo, size and type of witness trees and if off road - best way to arrive at corner.

