

06  
SECTION

20  
TOWN

07  
RANGE

# ADAMS COUNTY

COUNTY CORNER NO.: 23

ROMPORTOL ID: 42007060000

## PUBLIC LAND SURVEY MONUMENT RECORD

TYPE OF MONUMENT: HARRISON  
ADAMS COUNTY COORDINATES, NAD 83 (2007)

N. 314232.685

E. 562025.166

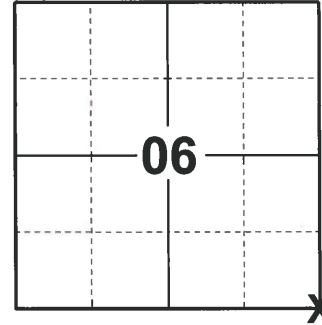
ELEVATION- - - - - DATUM - - - - -

FIELD WORK DATE: 02/12/2020

### BASIS FOR MONUMENT LOCATION

1983 - PLS 1444 THIS CORNER WAS SET BY DOUBLE PROPORTIONATE MEASURE. 10'X10' EXCAVATION WAS DONE AT THIS LOCATION AND NOTHING WAS FOUND.

2020 - PLS 2675 FOUND HARRISON MONUMENT 6"± BELOW THE GROUND SURFACE, 2 TIES, AND 2 WITNESSES. THE MONUMENT AGREES WITH THE WESTERLY TIE AND BOTH WITNESSES. ACCEPTED THE HARRISON MONUMENT AS THE CORNER LOCATION. SET 3 NEW TIES AND MEASURED TO THE EXISTING TIES AND WITNESSES.



LOCATION  
(INDICATE CORNER BY "X")

SEAL:



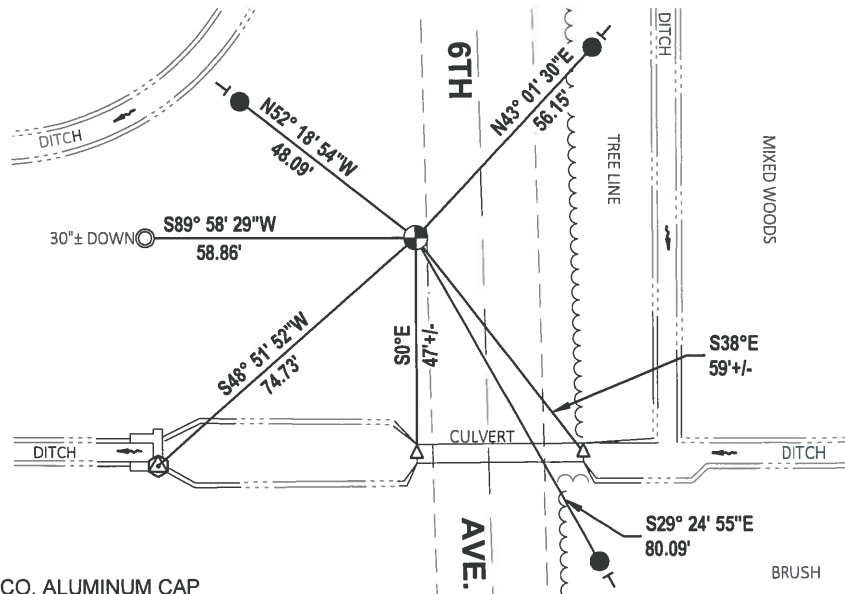
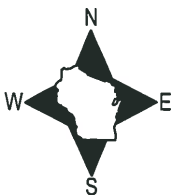
DATA SHOWN HERE ON THIS TIE SHEET IS CORRECT AND COMPLETE TO THE BEST OF MY KNOWLEDGE AND BELIEF.

PROFESSIONAL LAND SURVEYOR

DATE 3/9/2020

### - TIE SKETCH

NOTE: THE CORNER LANDS 14'± WEST OF THE CENTERLINE OF 6TH AVE.



- SET 3/4" x 18" IRON REBAR, 1.50#/FT
- ⊕ BRASS DISK ON DAM
- ⊙ FOUND HARRISON MONUMENT
- VINYL "T" POST
- △ HOLE IN TOP OF CULVERT
- ⊙ FOUND 1-1/4" O.D. IRON PIPE W/ADAMS CO. ALUMINUM CAP

# Government Land Corner Certificate

**ADAMS**

County

TYPE OF MONUMENT: HARRISON

STATE PLANE COORDINATES: N \_\_\_\_\_  
E \_\_\_\_\_

ELEVATION — M.S.L. DATUM: \_\_\_\_\_

THETA ANGLE: \_\_\_\_\_

FIELD BOOK: 91 PAGE 71

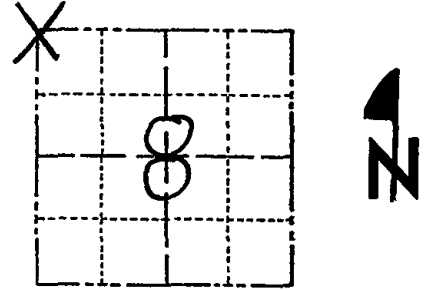
DRAWN BY: STH

CORNER NO. 23

SECTION 8

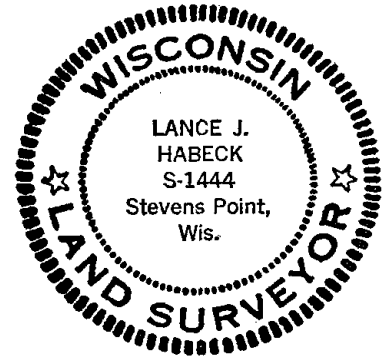
TOWN 20

RANGE 7



LOCATION  
(Indicated by 'X')

SEAL:



DATA SHOWN HERE ON  
CERTIFIED CORRECT:

*Lance J. Habeck*  
Registered Land Surveyor

DATE: 4/29/83

## BASIS FOR MONUMENT LOCATION

Show info such as: History of corner, with reference to Vol. and pg., dates, surveyor; exact description of monument replaced; if location computed, by taped or EDM traverse; landowner remarks, etc. (Use reverse side if necessary)

This corner was set by double proportionate measure. 10'x10' excavation was done at this location and nothing was found.

3-28-94, ALL OK, JG-GR  
2-22-99 - JG - OK  
OK 8-26-04 SS  
HAR - 2 GOOD TIES OK 7-7-09

## TIE SKETCH

Show at least four ties, also fence lines, roads, topo, size and type of witness trees and if off road - best way to arrive at corner.

