

05  
SECTION

20  
TOWN

07  
RANGE

# ADAMS COUNTY

COUNTY CORNER NO.: 24

ROMPORTOL ID: 42007050020

## PUBLIC LAND SURVEY MONUMENT RECORD

TYPE OF MONUMENT: HARRISON  
ADAMS COUNTY COORDINATES, NAD 83 (2007)

N. 314241.928

E. 564720.657

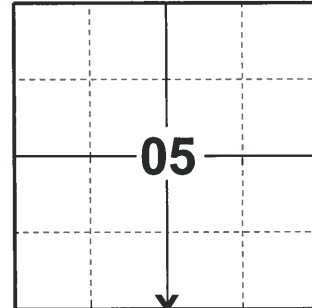
ELEVATION-      DATUM     

FIELD WORK DATE: 02/12/2020

### BASIS FOR MONUMENT LOCATION

1983 - PLS 1444 THIS CORNER WAS SET EQUIDISTANT AND ON LINE BETWEEN ADJACENT SECTION CORNERS. NO EVIDENCE OF ANY OTHER CORNERS WAS FOUND.

2020 - PLS 2675 FOUND HARRISON MONUMENT FLUSH WITH THE GROUND SURFACE. FOUND ALL THE TIES AND WITNESSES DISTURBED. THE HARRISON MONUMENT LANDS ON LINE AND EQUIDISTANT BETWEEN THE SE OF SECTION 5, AND SE OF SECTION 6. ACCEPTED HARRISON MONUMENT AS BEST EVIDENCE OF CORNER LOCATION. SET 4 NEW TIES.



**LOCATION**

(INDICATE CORNER BY "X")

SEAL:



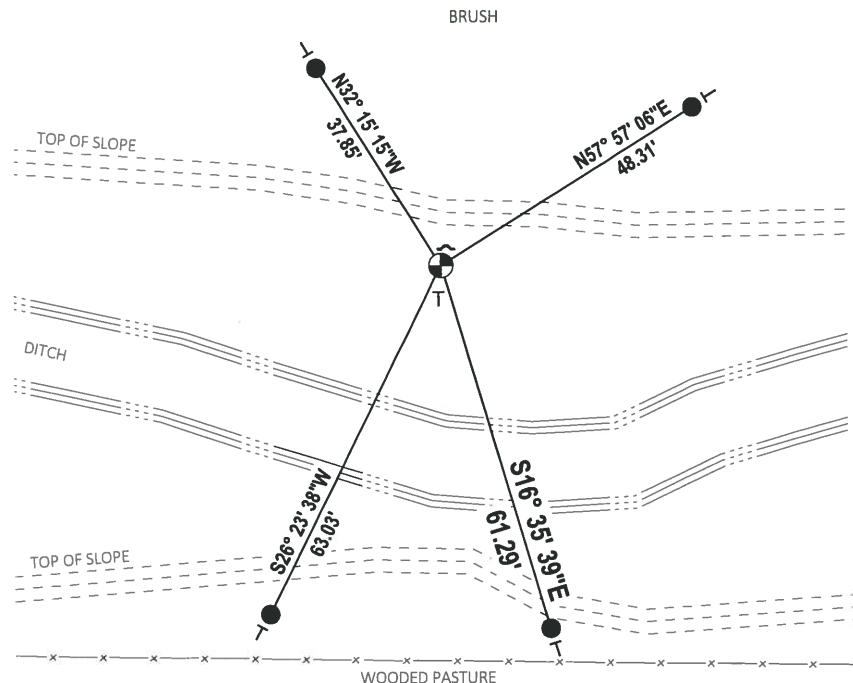
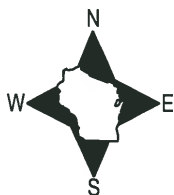
DATA SHOWN HERE ON THIS TIE SHEET IS CORRECT AND COMPLETE TO THE BEST OF MY KNOWLEDGE AND BELIEF.

PROFESSIONAL LAND SURVEYOR

DATE 3/1/2020

### - TIE SKETCH

NOTE: THE CORNER LANDS 59'± NORTH OF THE FENCE.



- SET 3/4" x 18" IRON REBAR, 1.50#/FT
- ⊕ FOUND HARRISON MONUMENT
- ┘ STEEL FENCE POST
- ┘ VINYL "T" POST

# Government Land Corner Certificate

**ADAMS** County

TYPE OF MONUMENT: HARRISON

STATE PLANE COORDINATES: N \_\_\_\_\_  
E \_\_\_\_\_

ELEVATION — M.S.L. DATUM: \_\_\_\_\_

THETA ANGLE: \_\_\_\_\_

FIELD BOOK: 91 PAGE 81

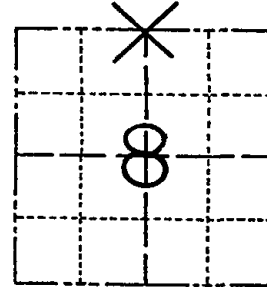
DRAWN BY: S.J.H.

CORNER NO. 24

SECTION 8

TOWN 20

RANGE 7

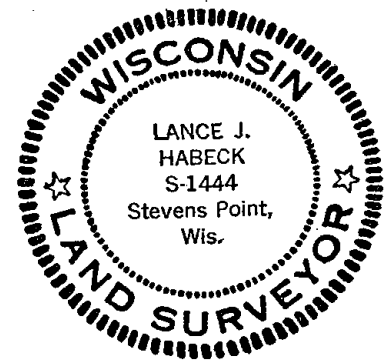


LOCATION  
(Indicated by 'X')

## BASIS FOR MONUMENT LOCATION

Show info such as: History of corner, with reference to Vol. and pg., dates, surveyor; exact description of monument replaced; if location computed, by taped or EDM traverse; landowner remarks, etc. (Use reverse side if necessary)

SEAL:



DATA SHOWN HERE ON  
CERTIFIED CORRECT:

*Lance J. Habeck*  
Registered Land Surveyor

DATE: 5/18/83

This corner was set equidistant and on line between adjacent Section corners. No evidence of any other corners was found.

filed for record this 8th  
day of JUNE, 1983  
per 59.60 Wisconsin Statutes.  
*S. Rheinhardt*  
ADAMS COUNTY SURVEYOR

## TIE SKETCH

Show at least four ties, also fence lines, roads, topo, size and type of witness trees and if off road - best way to arrive at corner.

