

04
SECTION

20
TOWN

07
RANGE

ADAMS COUNTY

COUNTY CORNER NO.: 27

ROMPORTOL ID: 42007040000

PUBLIC LAND SURVEY MONUMENT RECORD

TYPE OF MONUMENT: HARRISON
ADAMS COUNTY COORDINATES, NAD 83 (2007)

N. 314297.591

E. 572722.239

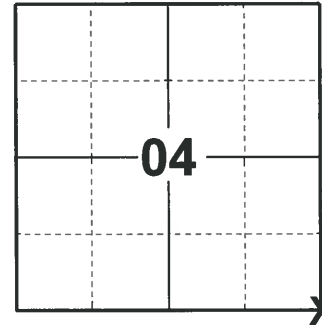
ELEVATION- - - - DATUM - - - -

FIELD WORK DATE: 02/11/2020

BASIS FOR MONUMENT LOCATION

1973 - PLS 878 LOCATION WAS DETERMINED FROM TRAVERSE OF THE SOUTH HALF OF SECTION. NO EXCAVATION DONE BECAUSE OF NEW ROAD CONSTRUCTION AND ANY MARK APPARENTLY DESTROYED.

2020 - PLS 2675 FOUND HARRISON MONUMENT 6"± BELOW THE ROAD SURFACE, 2 TIES, AND 1 WITNESS. THE MONUMENT AGREES WITH THE TIES AND WITNESS. ACCEPTED THE HARRISON MONUMENT AS THE CORNER LOCATION. SET 3 NEW TIES AND MEASURED TO THE EXISTING TIES AND WITNESS.



LOCATION

(INDICATE CORNER BY "X")

SEAL:



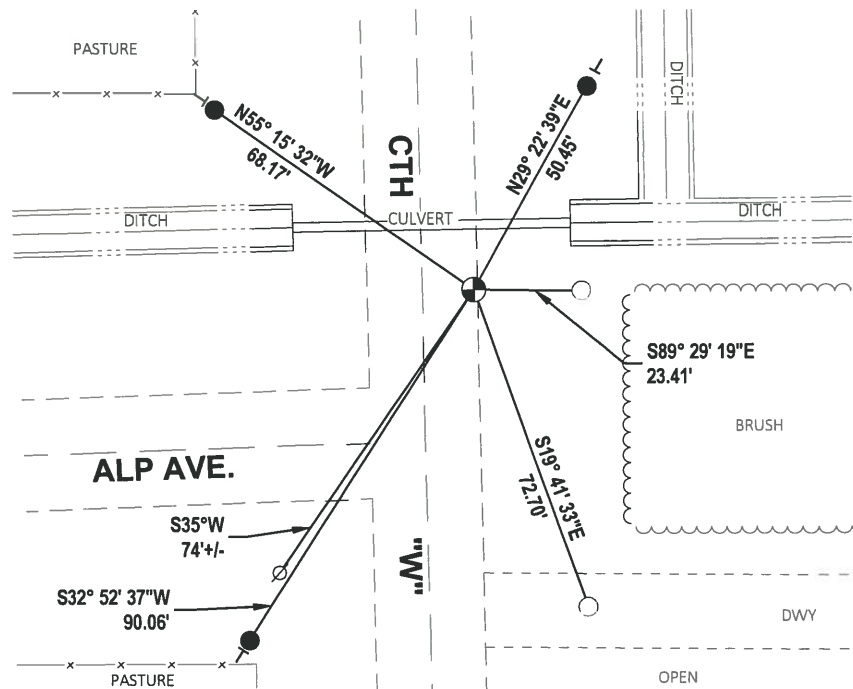
DATA SHOWN HERE ON THIS TIE SHEET IS CORRECT AND COMPLETE TO THE BEST OF MY KNOWLEDGE AND BELIEF.

PROFESSIONAL LAND SURVEYOR

DATE 3/9/2020

- TIE SKETCH

NOTE: THE CORNER LANDS 11'± EAST OF CENTERLINE OF CTH "W".



- SET 3/4" x 18" IRON REBAR, 1.50#/FT
- FOUND 3/4" IRON ROD
- ⊕ FOUND HARRISON MONUMENT
- ∅ WITNESS POWER POLE
- VINYL "T" POST

ADAMS COUNTY

Survey Monument Record

TYPE OF MONUMENT: 30" HARRISON

STATE PLANE COORDINATES: N _____

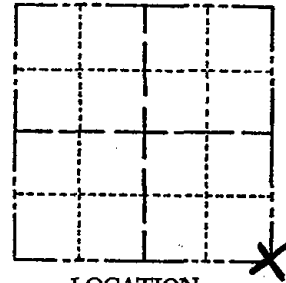
E _____

ELEVATION — M.S.L. DATUM: _____

THETA ANGLE: _____

FIELD BOOK: 107 PAGE 33

CORNER NO. 142 (27)
SECTION 4
TOWN 20
RANGE 7



LOCATION
(Indicated by 'X')

SEAL:



BASIS FOR MONUMENT LOCATION

(Use reverse side if necessary)

Show info such as: History of corner, with reference to Vol. and pg, dates, surveyor; exact description of monument replaced; if location computed, by taped or EDM traverse; landowner remarks, etc.

Location was determined from traverse of the south half of section. No excavation done because of new road construction and any mark apparently destroyed.

See the reverse side for the updated map of 5-4-84

Acc O.K. 3-23-79 DW - RN

CERTIFIED CORRECT:

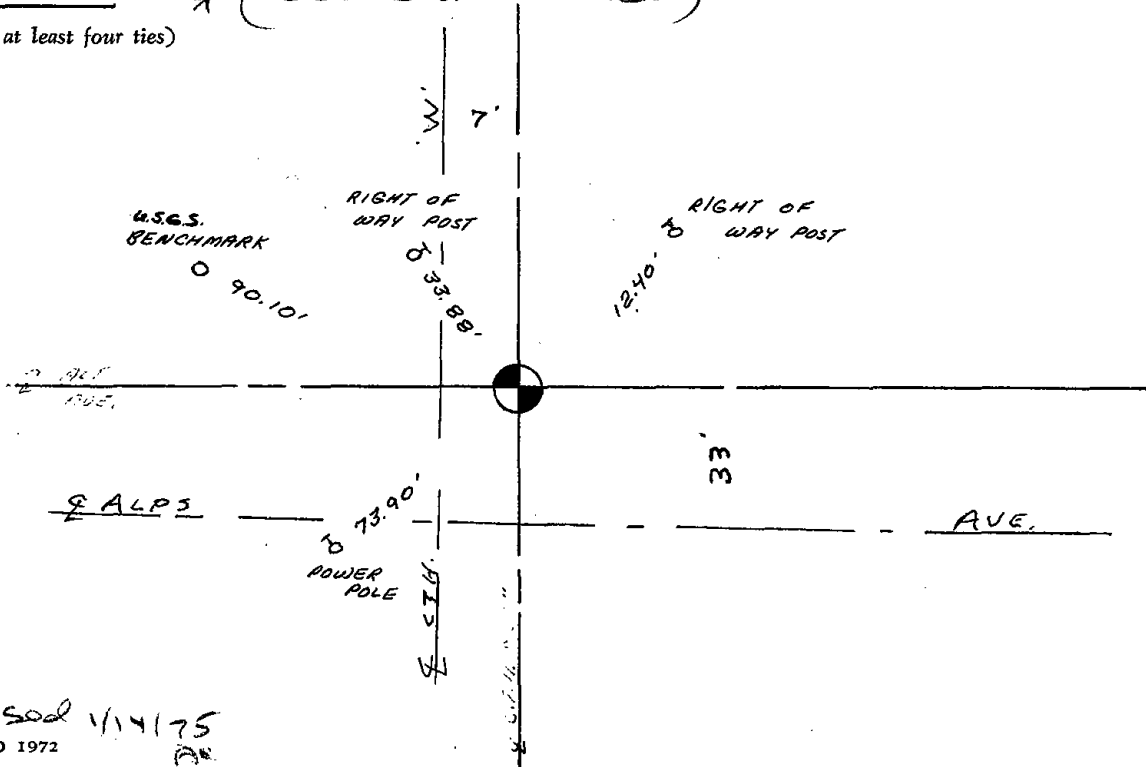
Anthony B. Kiedrowski
Registered Land Surveyor

DATE: 1-27-73

TIE SKETCH

* (SEE BACK OF PAGE)

(Show at least four ties)



Revised 1/14/75
REVISED 1972
AK

Seam on Top of
W. edge of culvert

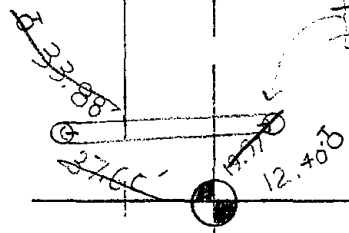
~~GONE~~
~~Right of way~~
~~Post~~

'09.
FOUND LAMPERT/LEE
3/4" ROD 23.25' EAST

~~Seam on Top Center of E.
End of culvert~~

USGS
Bench mark 90.10'

~~GONE~~
~~Right of way Post~~



33' ±

ALPS
Ave.

73.90'
Power
Pole
RR SPIKE

CTH

3/4" Rod SET @ E of
TRAIL EAST @ E. EDGE
OF BITUMINOUS APRON
± 33' E. of E of "W"

41.7' NW - SLOPE TAPE
W. END CULVERT AT S.
EDGE OF EXISTING CUT

Two new ties were set on 5-4-84 SS-DK

ALL OK 3-28-94 SG-GR

OK 2-22-99-JG 2 GONE, 4 LEFT

2 NEW TIES 12-10-04 SS
1 " " 10-07-09 SS (DID NOT LOCATE USGS)