

03
SECTION

20
TOWN

07
RANGE

ADAMS COUNTY

COUNTY CORNER NO: 28

ROMPORTOL ID: 42007030020

PUBLIC LAND SURVEY MONUMENT RECORD

TYPE OF MONUMENT: HARRISON

ADAMS COUNTY COORDINATES, NAD 83 (2007)

N. 314273.546

E. 575337.968

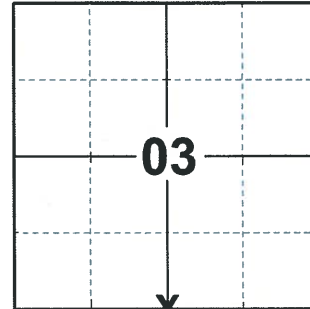
ELEVATION- DATUM

FIELD WORK DATE: 03/10/2020

BASIS FOR MONUMENT LOCATION

1982 - PLS 878 SET CORNER EQUIDISTANT AND ON LINE BETWEEN THE SE CORNER OF SECTION 3 AND THE SW CORNER OF SECTION 3. NO RESURVEYS OF RECORD. ALL EVIDENCE OF THIS CORNER DESTROYED BY DITCHING.

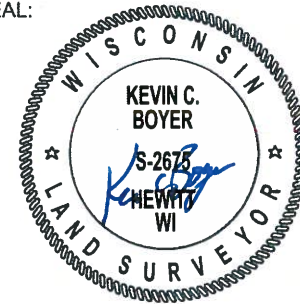
2020 - PLS 2675 FOUND HARRISON MONUMENT 4"± ABOVE THE GROUND, DID NOT FIND ANY TIES OR WITNESSES. THE MONUMENT WAS VERIFIED TO BE ON A NEAR STRAIGHT LINE AND EQUIDISTANT BETWEEN THE SE AND SW CORNERS OF SECTION 3. ACCEPTED THE HARRISON MONUMENT AS THE BEST EVIDENCE OF THE CORNER LOCATION. SET 4 NEW TIES.



LOCATION

(INDICATE CORNER BY "X")

SEAL:

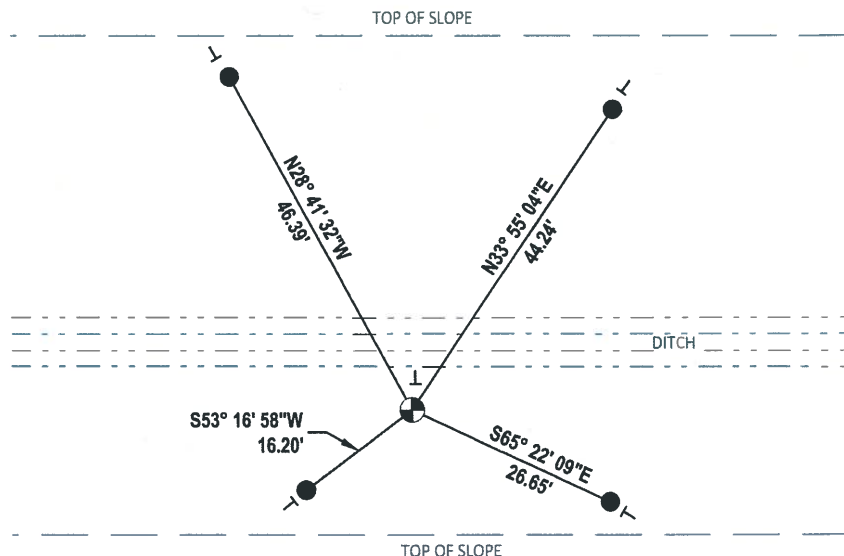
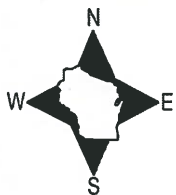


DATA SHOWN HERE ON THIS TIE SHEET IS CORRECT AND COMPLETE TO THE BEST OF MY KNOWLEDGE AND BELIEF.

PROFESSIONAL LAND SURVEYOR

DATE 3/25/2020

TIE SKETCH

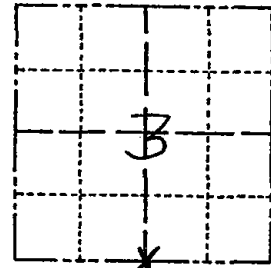


- SET 3/4" x 18" IRON REBAR, 1.50#/FT
- ⊕ FOUND HARRISON MONUMENT
- VINYL "T" POST

Government Land Corner Certificate

ADAMS County
 TYPE OF MONUMENT: HARRISON
 STATE PLANE COORDINATES: N _____
 E _____
 ELEVATION — M.S.L. DATUM: _____
 THETA ANGLE: _____
 FIELD BOOK: 88 PAGE 134
 DRAWN BY: S.J.H.

CORNER NO. 28
 SECTION 3
 TOWN 20
 RANGE 7



LOCATION
(Indicated by 'X')

BASIS FOR MONUMENT LOCATION

Show info such as: History of corner, with reference to Vol. and pg., dates, surveyor; exact description of monument replaced; if location computed, by taped or EDM traverse; landowner remarks, etc. (Use reverse side if necessary)

Set corner equidistant and on line between the SE corner of Section 3 and the SW corner of Section 3. No resurveys of record. All evidence of this corner destroyed by ditching.

SEAL:



DATA SHOWN HERE ON
CERTIFIED CORRECT:

Anthony B. Kiedrowski
Registered Land Surveyor

DATE: 5-25-82

TIE SKETCH

Show at least four ties, also fence lines, roads, topo, size and type of witness trees and if off road - best way to arrive at corner.

