

02  
SECTION

20  
TOWN

07  
RANGE

# ADAMS COUNTY

COUNTY CORNER NO: 30

ROMPORTOL ID: 42007020020

## PUBLIC LAND SURVEY MONUMENT RECORD

TYPE OF MONUMENT: HARRISON (BROKEN-TOP)

ADAMS COUNTY COORDINATES, NAD 83 (2007)

N. 314290.895

E. 580575.836

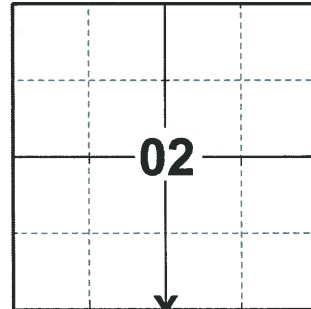
ELEVATION- - - - DATUM - - - -

FIELD WORK DATE: 03/10/2020

### BASIS FOR MONUMENT LOCATION

1982 - PLS 878 SET CORNER EQUIDISTANT AND ON LINE BETWEEN THE SW CORNER OF SECTION 2 AND THE SE CORNER OF SECTION 2. SEARCHED FOR BEARING TREES, NONE REMAIN. ALL EVIDENCE OF CORNER DESTROYED BY DITCH. NO RESURVEYS OF RECORD.

2020 - PLS 2675 FOUND HARRISON (BROKEN-TOP) 4"± BELOW THE GROUND AND 1 WITNESS. THE MONUMENT AGREES WITH THE WITNESS AND WAS VERIFIED TO BE ON A NEAR STRAIGHT LINE AND EQUIDISTANT BETWEEN THE SE AND SW CORNERS OF SECTION 2. ACCEPTED THE HARRISON (BROKEN-TOP) MONUMENT AT THE CORNER LOCATIONS. SET 4 NEW TIES AND MEASURED TO THE EXISTING WITNESS.



LOCATION

(INDICATE CORNER BY "X")

SEAL:

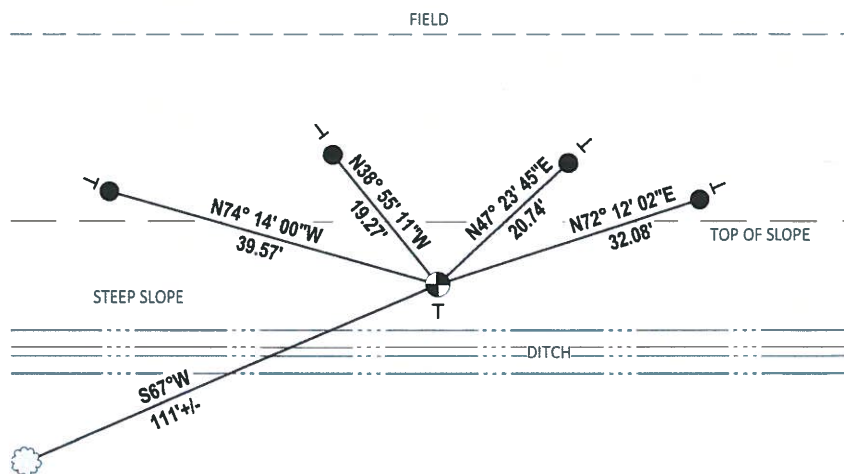
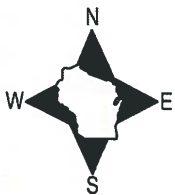


DATA SHOWN HERE ON THIS TIE SHEET IS CORRECT AND COMPLETE TO THE BEST OF MY KNOWLEDGE AND BELIEF.

PROFESSIONAL LAND SURVEYOR

DATE 3/25/2020

### TIE SKETCH

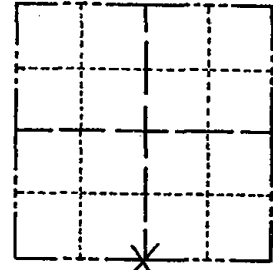


- SET 3/4" x 18" IRON REBAR, 1.50#/FT
- ⊕ FOUND HARRISON (BROKEN-TOP) MONUMENT
- └ VINYL "T" POST
- ☉ WITNESS TREE

# Government Land Corner Certificate

ADAMS County  
 TYPE OF MONUMENT: HARRISON  
 STATE PLANE COORDINATES: N \_\_\_\_\_  
 E \_\_\_\_\_  
 ELEVATION — M.S.L. DATUM: \_\_\_\_\_  
 THETA ANGLE: \_\_\_\_\_  
 FIELD BOOK: 88 PAGE 123  
 DRAWN BY: S.J.H.

CORNER NO. 30  
 SECTION 2  
 TOWN 20  
 RANGE 7



LOCATION  
(Indicated by 'X')

## BASIS FOR MONUMENT LOCATION

Show info such as: History of corner, with reference to Vol. and pg., dates, surveyor; exact description of monument replaced; if location computed, by taped or EDM traverse; landowner remarks, etc. (Use reverse side if necessary)

Set corner equidistant and on line between the SW corner of Section 2 and the SE corner of Section 2. Searched for bearing trees, none remain. All evidence of corner destroyed by ditch. No resurveys of record.

SEAL:



DATA SHOWN HERE ON CERTIFIED CORRECT:

*Anthony B. Kiedrowski*  
 Registered Land Surveyor

DATE: 5-4-82

OK 5-2-84 SS-DK  
 OK 03-22-99 JG-JF

## TIE SKETCH

Show at least four ties, also fence lines, roads, topo, size and type of witness trees and if off road - best way to arrive at corner.

