

PUBLIC LAND SURVEY MONUMENT RECORD

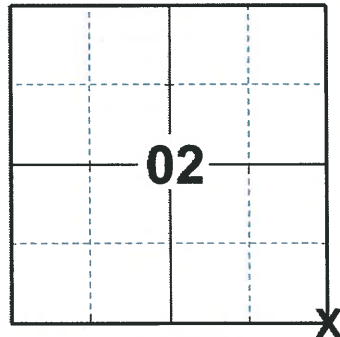
TYPE OF MONUMENT: HARRISON
ADAMS COUNTY COORDINATES, NAD 83 (2007)

N. 314338.033

E. 583196.595

ELEVATION- _____ DATUM _____

FIELD WORK DATE: 03/03/2020



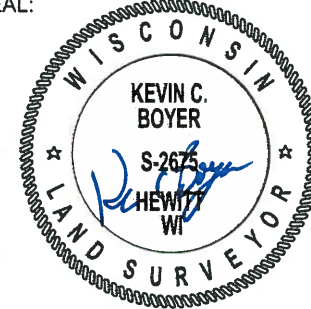
LOCATION
(INDICATE CORNER BY "X")

BASIS FOR MONUMENT LOCATION

1982 - PLS 878 SET CORNER AT PRORATED DISTANCE BETWEEN THE W1/4 CORNER OF SECTION 1 AND THE SW CORNER OF SECTION 12 FOR NORTH - SOUTH LOCATION. FOR EAST - WEST LOCATION, EXTENDED LINE FROM THE NW CORNER OF SECTION 1, SOUTH THROUGH THE W1/4 CORNER OF SECTION 1. NO RESURVEYS OF RECORD. NO OTHER EVIDENCE OF CORNER. SEARCHED FOR BEARING TREES, NONE REMAIN.

2020 - PLS 2675 FOUND A HARRISON MONUMENT 6"± ABOVE THE GROUND SURFACE AND 2 WITNESS TREES. THE MONUMENT AGREES WITH THE WITNESS TREES. ACCEPTED THE HARRISON MONUMENT AS THE CORNER LOCATION. SET 4 NEW TIES AND MEASURED TO THE EXISTING WITNESS TREES.

SEAL:

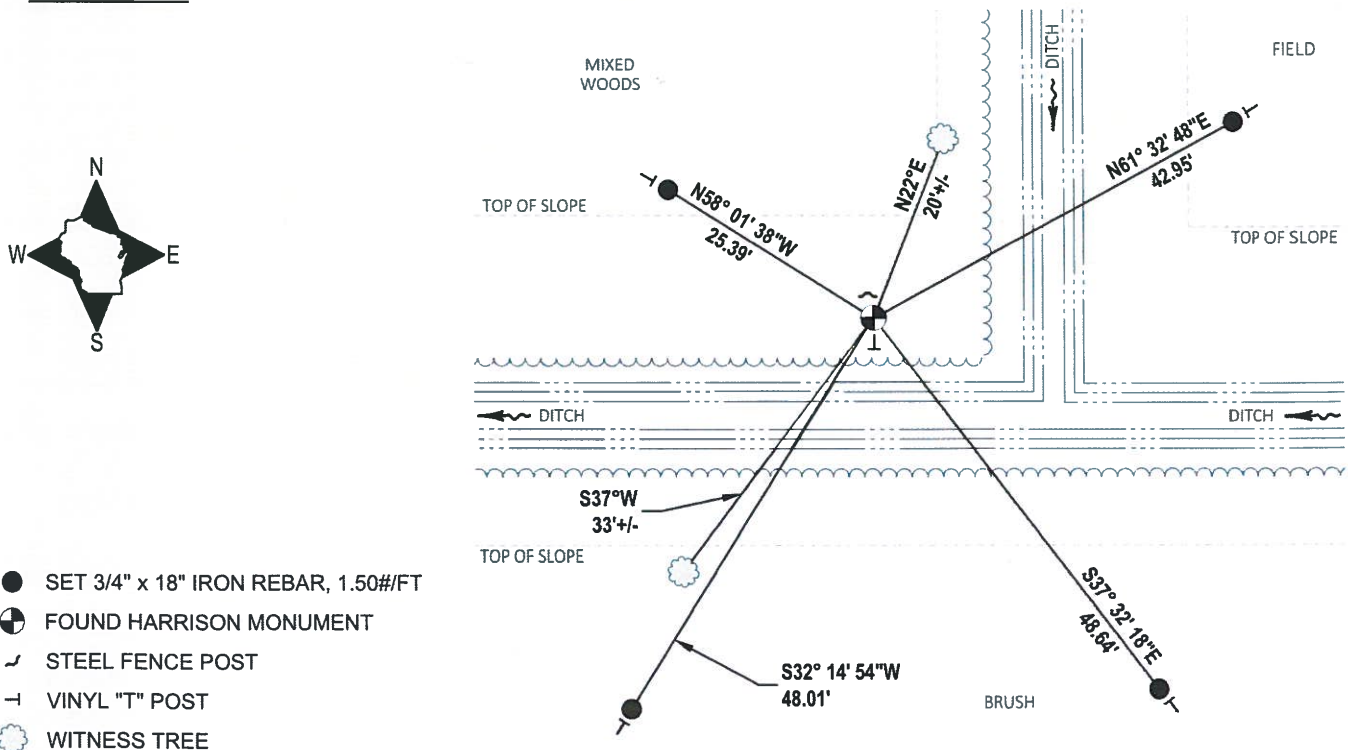


DATA SHOWN HERE ON THIS TIE SHEET IS CORRECT AND COMPLETE TO THE BEST OF MY KNOWLEDGE AND BELIEF.

PROFESSIONAL LAND SURVEYOR

DATE 3/25/2020

- TIE SKETCH

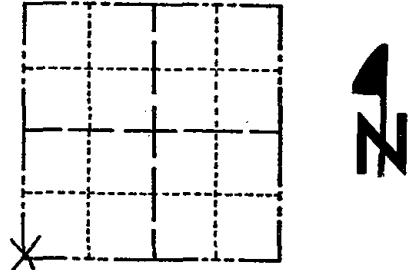


- SET 3/4" x 18" IRON REBAR, 1.50#/FT
- ⊙ FOUND HARRISON MONUMENT
- ┌ STEEL FENCE POST
- └ VINYL "T" POST
- ⊙ WITNESS TREE

Government Land Corner Certificate

ADAMS County
 TYPE OF MONUMENT: HARRISON
 STATE PLANE COORDINATES: N _____
 E _____
 ELEVATION — M.S.L. DATUM: _____
 THETA ANGLE: _____
 FIELD BOOK: 88 PAGE 122
 DRAWN BY: S.J.M.

CORNER NO. 31
 SECTION 1
 TOWN 20
 RANGE 7



BASIS FOR MONUMENT LOCATION

Show info such as: History of corner, with reference to Vol. and pg., dates, surveyor; exact description of monument replaced; if location computed, by taped or EDM traverse; landowner remarks, etc. (Use reverse side if necessary)

Set corner at prorated distance between the $W\frac{1}{2}$ corner of Section 1 and the SW corner of Section 12 for North - South location. For East - West location, extended line from the NW corner of Section 1, South through the $W\frac{1}{2}$ corner of Section 1. No resurveys of record. No other evidence of corner. Searched for bearing trees, none remain.

Ok 5-2-84 SS-DK

I-NEW TIE, MON. OK 6-14-94 CR-JG
 OK-03-22-99 JG-JP
 OK 9-01-04
 " 4-13-09 SS

SEAL:



DATA SHOWN HERE ON CERTIFIED CORRECT:

Anthony B. Kiedrowski
 Registered Land Surveyor

DATE: 5-7-82

TIE SKETCH

Show at least four ties, also fence lines, roads, topo, size and type of witness trees and if off road - best way to arrive at corner.

Fo. Steel Post @ Cor.

