

10
SECTION

20
TOWN

07
RANGE

ADAMS COUNTY

COUNTY CORNER NO: 38
ROMPORTOL ID: 42007102000

PUBLIC LAND SURVEY MONUMENT RECORD

TYPE OF MONUMENT: HARRISON
ADAMS COUNTY COORDINATES, NAD 83 (2007)

N. 311605.182

E. 578004.895

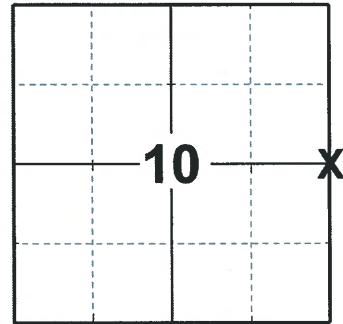
ELEVATION- _____ DATUM _____

FIELD WORK DATE: 12/09/19

BASIS FOR MONUMENT LOCATION

1982 - PLS 878 EXCAVATION WITH BACKHOE YIELDED NO EVIDENCE OF ORIGINAL MONUMENT OR ANY REMONUMENTATION. NO RESURVEYS OF RECORD. SEARCHED FOR BEARING TREES, NONE REMAIN. HELD THE FENCE TO THE WEST AS BEST AVAILABLE EVIDENCE FOR NORTH-SOUTH LOCATION. FOR EAST-WEST LOCATION, PUT ON LINE BETWEEN THE NW CORNER OF SECTION 11 AND THE SW CORNER OF SECTION 11.

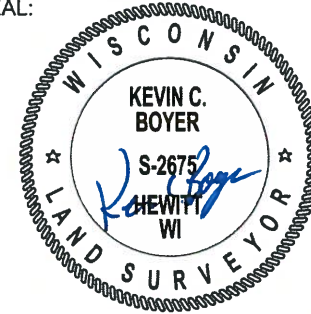
2020 - PLS 2675 FOUND A HARRISON MONUMENT 12"± BELOW THE ROAD SURFACE AND 3 TIES. ALL 3 TIES HAVE BEEN DAMAGED. STRAIGHTENED UP ALL THE EXISTING TIES AND THEY AGREE WITH THE MONUMENT. ACCEPTED THE HARRISON MONUMENT AS THE CORNER LOCATION. SET 3 NEW TIES AND MEASURED TO THE EXISTING TIES.



LOCATION

(INDICATE CORNER BY "X")

SEAL:

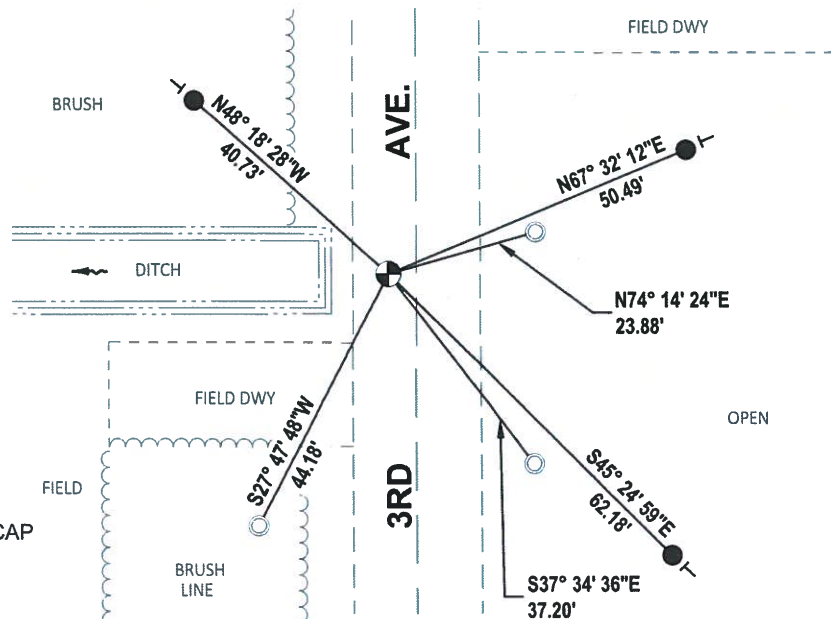
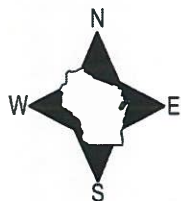


DATA SHOWN HERE ON THIS TIE SHEET IS CORRECT AND COMPLETE TO THE BEST OF MY KNOWLEDGE AND BELIEF.

PROFESSIONAL LAND SURVEYOR

DATE 3/25/2020

- TIE SKETCH

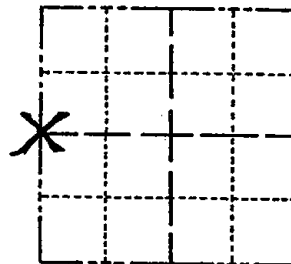


- SET 3/4" x 18" IRON REBAR, 1.50#/FT
- FOUND 1-1/4" O.D. IRON PIPE W/ALUMINUM CAP
- FOUND HARRISON MONUMENT
- └ VINYL "T" POST

Government Land Corner Certificate

ADAMS County
 TYPE OF MONUMENT: HARRISON
 STATE PLANE COORDINATES: N _____
 E _____
 ELEVATION — M.S.L. DATUM: _____
 THETA ANGLE: _____
 FIELD BOOK: 88 PAGE 126
 DRAWN BY: ROBERT T. WELCH

CORNER NO. 38
 SECTION 11
 TOWN 20
 RANGE 7



LOCATION
(Indicated by 'X')

BASIS FOR MONUMENT LOCATION

Show info such as: History of corner, with reference to Vol. and pg., dates, surveyor; exact description of monument replaced; if location computed, by taped or EDM traverse; landowner remarks, etc. (Use reverse side if necessary)

Excavation with backhoe yielded no evidence of original monument or any remonumentation. No resurveys of record. Searched for bearing trees, none remain. Held the fence to the West as best available evidence for North-South location. For East-West location, put on line between the NW corner of Section 11 and the SW corner of Section 11.

SEAL:



DATA SHOWN HERE ON
CERTIFIED CORRECT:

Anthony B. Kiedrowski
Registered Land Surveyor

DATE: 5-25-82

OK 4-30-84 SS-DK

TIE SKETCH

Show at least four ties, also fence lines, roads, topo, size and type of witness trees and if off road - best way to arrive at corner.

