

11
SECTION

20
TOWN

07
RANGE

ADAMS COUNTY

COUNTY CORNER NO: 39

ROMPORTOL ID: 42007112000

PUBLIC LAND SURVEY MONUMENT RECORD

TYPE OF MONUMENT: SURVEY NAIL
ADAMS COUNTY COORDINATES, NAD 83 (2007)

N. 311689.743

E. 583265.994

ELEVATION- - - - DATUM - - - -

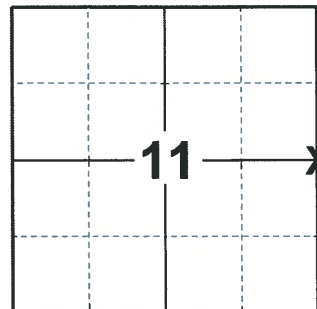
FIELD WORK DATE: 02/17/2020

BASIS FOR MONUMENT LOCATION

1982 - PLS 878 CORNER SET EQUIDISTANT AND ON LINE BETWEEN THE NW CORNER OF SECTION 12 AND THE SW CORNER OF SECTION 12. NO RESURVEYS OF RECORD. SEARCHED FOR BEARING TREES, NONE REMAIN. ANY OTHER EVIDENCE OF THIS CORNER DESTROYED BY DITCHING.

2013 - PLS 1478 FOUND HARRISON IN PLACE 8-16-13 AND REMOVED BECAUSE OF ROAD CONSTRUCTION AND SET IRON RODS FOR NEW TIES. SET MAG NAIL IN PLACE OF HARRISON ON 10-24-13 AFTER ROAD CONSTRUCTION COMPLETED.

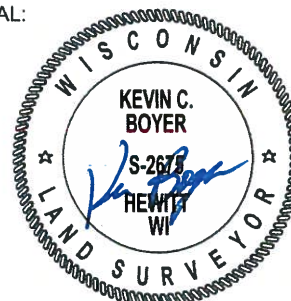
2020 - PLS 2675 FOUND SURVEY NAIL IN THE ROAD SURFACE AND 4 TIES. DID NOT LOOK FOR ANY ADDITIONAL MONUMENTS BELOW SINCE THE HARRISON WAS REMOVED IN 2013 FOR ROAD CONSTRUCTION. THE MONUMENT AGREES WITH ALL 4 TIES. ACCEPTED THE SURVEY NAIL AS THE CORNER LOCATION AND MEASURED TO THE EXISTING TIES.



LOCATION

(INDICATE CORNER BY "X")

SEAL:



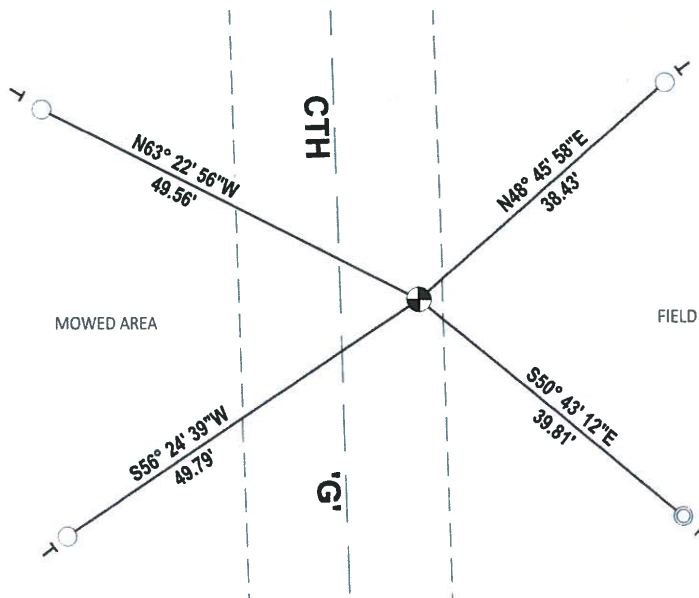
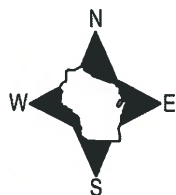
DATA SHOWN HERE ON THIS TIE SHEET IS CORRECT AND COMPLETE TO THE BEST OF MY KNOWLEDGE AND BELIEF.

PROFESSIONAL LAND SURVEYOR

DATE 3/25/2020

TIE SKETCH

NOTE: THE CORNER LANDS 9.4± EAST OF CTH 'G' CENTERLINE.



- FOUND 3/4" IRON ROD
- FOUND 1-1/4" O.D. IRON PIPE
- FOUND SURVEY NAIL MONUMENT
- ⊥ VINYL "T" POST

