

07
SECTION

20
TOWN

07
RANGE

ADAMS COUNTY

COUNTY CORNER NO: 42

ROMPORTOL ID: 42007070020

PUBLIC LAND SURVEY MONUMENT RECORD

TYPE OF MONUMENT: CALCULATED POSITION
ADAMS COUNTY COORDINATES, NAD 83 (2007)

N. 308906.460

E. 559408.750

ELEVATION- - - - DATUM - - - -

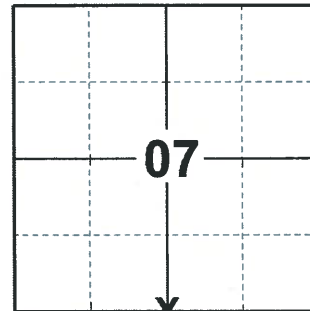
FIELD WORK DATE: 02/15/2020

BASIS FOR MONUMENT LOCATION

1979 - PLS 1478 SET EQUIDISTANT AND ON LINE BETWEEN ADJACENT SECTION CORNERS. NO EVIDENCE OF ANY PREVIOUS MONUMENTATION WAS FOUND.

1983 - PLS 1551 1-1/2" PIPE SET BY RHINEHART IN 1979 WAS FOUND TO BE DISTURBED AND LYING ON IT'S SIDE. TIE TO BRIDGE TO THE NORTH HAS BEEN DESTROYED. RESET PIPE PROPORTIONALLY FROM TRAVERSE AND MADE TIES AS SHOWN.

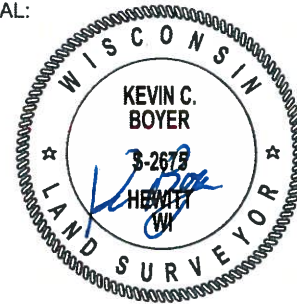
2020 - PLS 2675 FOUND 2 TIES AND 2 WITNESSES. CALCULATED THE CORNER POSITION BY HOLDING A RECORDED DISTANCE FROM THE SW CORNER OF SECTION 9 AND A STRAIGHT LINE BETWEEN THE SW AND SE CORNERS OF SECTION 9. THIS POSITION AGREES WITH ALL EXISTING TIES AND WITNESSES. ACCEPTED THIS AS THE BEST EVIDENCE FOR THE CORNER POSITION AS IT ALSO AGREES WITH EXISTING SURVEYS IN THE SECTION AS WELL. SET 3 NEW TIES AND MEASURED TO THE EXISTING TIES AND WITNESSES.



LOCATION

(INDICATE CORNER BY "X")

SEAL:



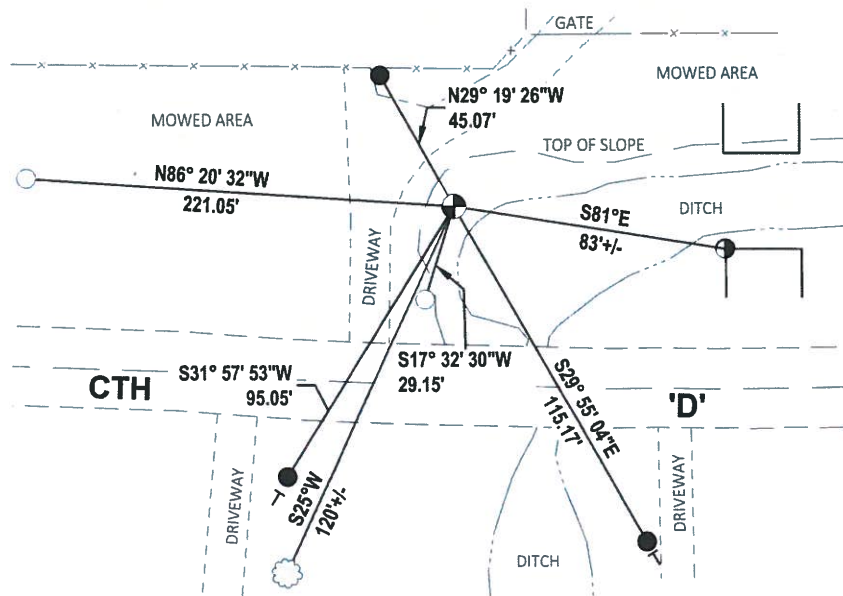
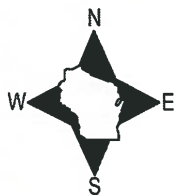
DATA SHOWN HERE ON THIS TIE SHEET IS CORRECT AND COMPLETE TO THE BEST OF MY KNOWLEDGE AND BELIEF.

PROFESSIONAL LAND SURVEYOR

DATE 3/25/2020

- TIE SKETCH

NOTE: THE CALCULATED CORNER LOCATION LANDS 53'± NORTH OF CTH 'D' CENTERLINE.



- SET 3/4" x 18" IRON REBAR, 1.50#/FT
- FOUND 3/4" IRON ROD
- NW CORNER OF OLD BRIDGE
- CALCULATED POSITION
- VINYL "T" POST
- WITNESS TREE

U.S. PUBLIC LAND SURVEY MONUMENT RECORD

ADAMS COUNTY

TYPE OF MONUMENT: 1 1/2" x 36" pipe

STATE PLANE COORDINATES: N _____
E _____

ELEVATION — M.S.L. DATUM: _____

THETA ANGLE: _____

FIELD BOOK: Adams County PAGE 75

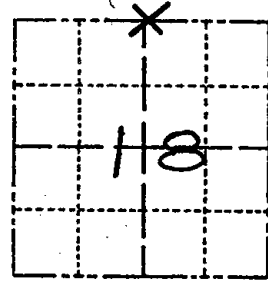
DRAWN BY: D. Riesop

CORNER NO. 42

SECTION 18

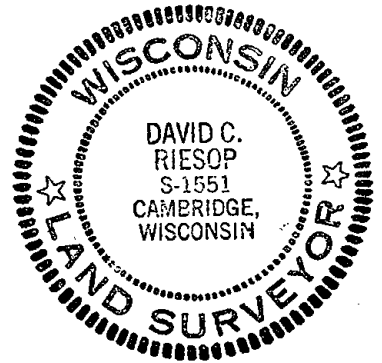
TOWN 20N

RANGE 7E



LOCATION
(Indicated by 'X')

SEAL:



DATA SHOWN HERE ON
CERTIFIED CORRECT:

David C. Riesop
Registered Land Surveyor

DATE: 11/28/83

BASIS FOR MONUMENT LOCATION

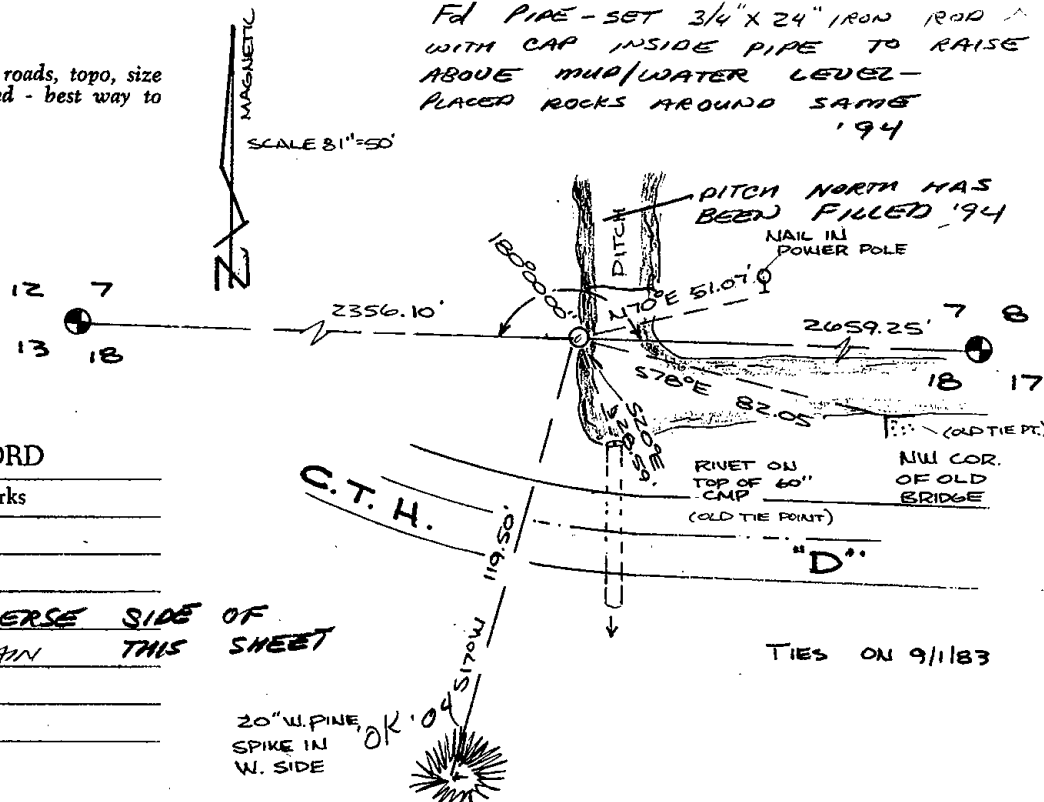
Show info such as: History of corner, with reference to Vol. and pg., dates, surveyor; exact description of monument replaced; if location computed, by taped or EDM traverse; landowner remarks, etc. (Use reverse side if necessary)
(in conformance with Section A-E 502 of the Wisconsin Administrative Code)

1 1/2" pipe set by Rhinehart in 1979 was found to be disturbed and lying on it's side. Tie to bridge to the North has been destroyed.

Reset pipe proportionally from traverse and made ties as shown.

TIE SKETCH

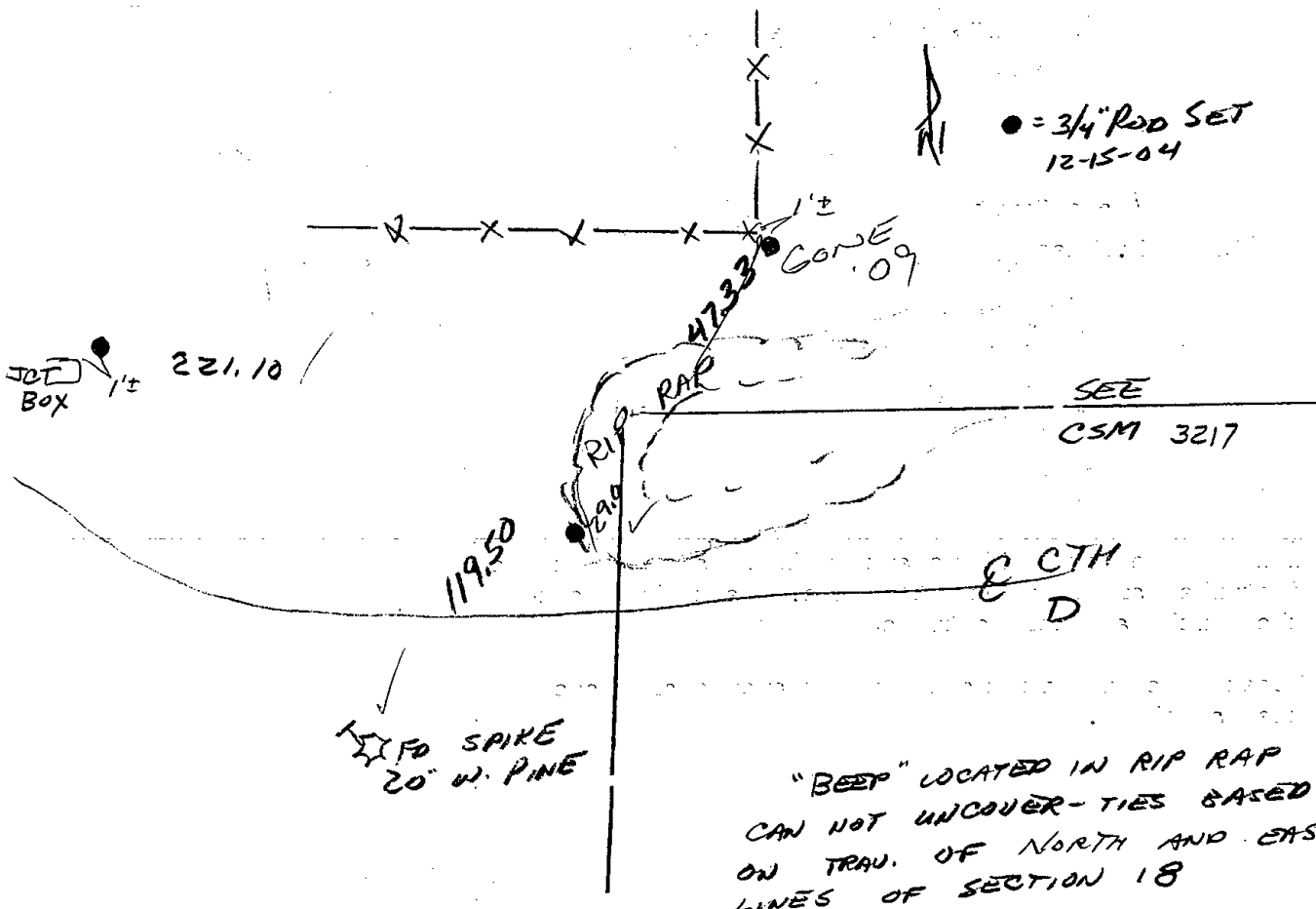
Show at least four ties, also fence lines, roads, topo, size and type of witness trees and if off road - best way to arrive at corner.



MAINTENANCE RECORD

Date	Init.	Remarks
4-21-94	JG-SS	OK
2-22-99	JG	OK
12-14-04	JS-SS	SEE REVERSE SIDE OF
10-8-09	SS	3 TIES REMAIN THIS SHEET

● = 3/4" ROD SET
12-15-04



JCT Box 221.10

4233

SEE CSM 3217

E CTH D

WOOD SPIKE
20' W. PINE

"BEEP" LOCATED IN RIP RAP
CAN NOT UNCOVER-TIES BASED
ON TRAV. OF NORTH AND EAST
LINES OF SECTION 18

U.S. PUBLIC LAND SURVEY MONUMENT RECORD

ADAMS COUNTY

TYPE OF MONUMENT: 1 1/2" x 36" pipe

STATE PLANE COORDINATES: N _____
E _____

ELEVATION — M.S.L. DATUM: _____

THETA ANGLE: _____

FIELD BOOK: Adams County PAGE 75

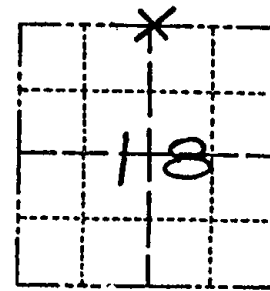
DRAWN BY: D. Riesop

CORNER NO. 42

SECTION 18

TOWN 20N

RANGE 7E



LOCATION
(Indicated by 'X')

SEAL:



DATA SHOWN HERE ON
CERTIFIED CORRECT:

David C. Riesop
Registered Land Surveyor

DATE: 11/28/83

BASIS FOR MONUMENT LOCATION

Show info such as: History of corner, with reference to Vol. and pg., dates, surveyor; exact description of monument replaced; if location computed, by taped or EDM traverse; landowner remarks, etc. (Use reverse side if necessary)
(in conformance with Section A-E 502 of the Wisconsin Administrative Code)

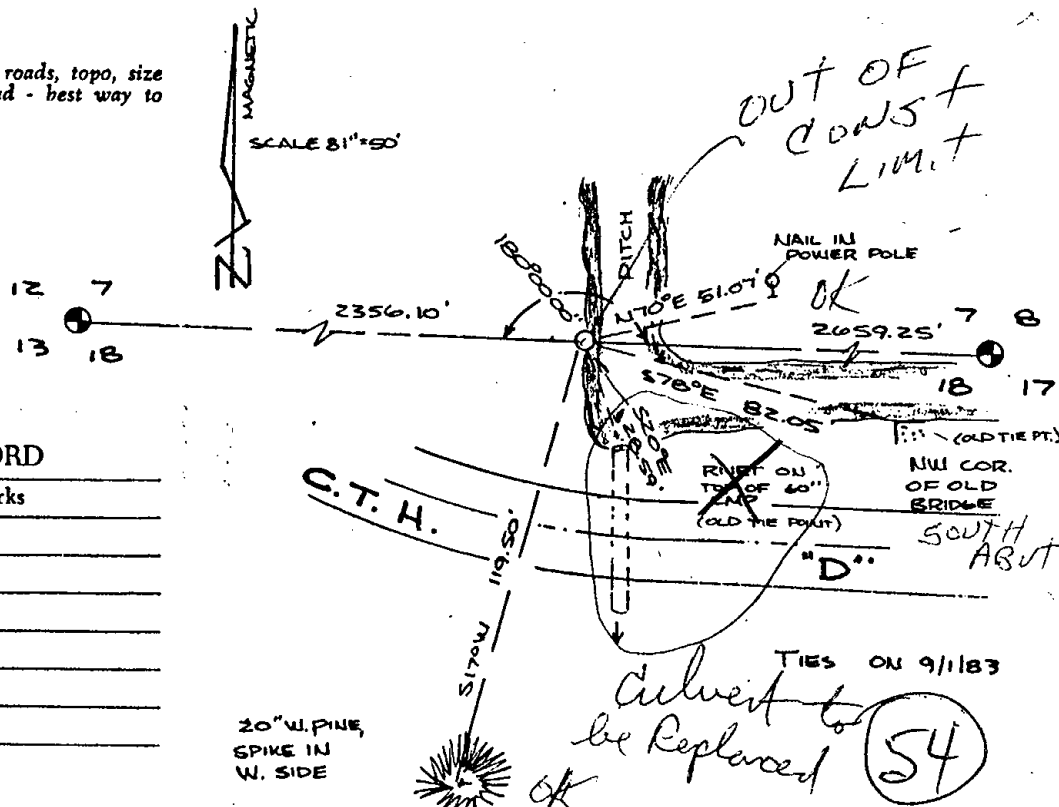
1 1/2" pipe set by Rhinehart in 1979 was found to be disturbed and lying on it's side. Tie to bridge to the North has been destroyed.

Reset pipe proportionally from traverse and made ties as shown.

9-25-85 note
DID NOT FIND

TIE SKETCH

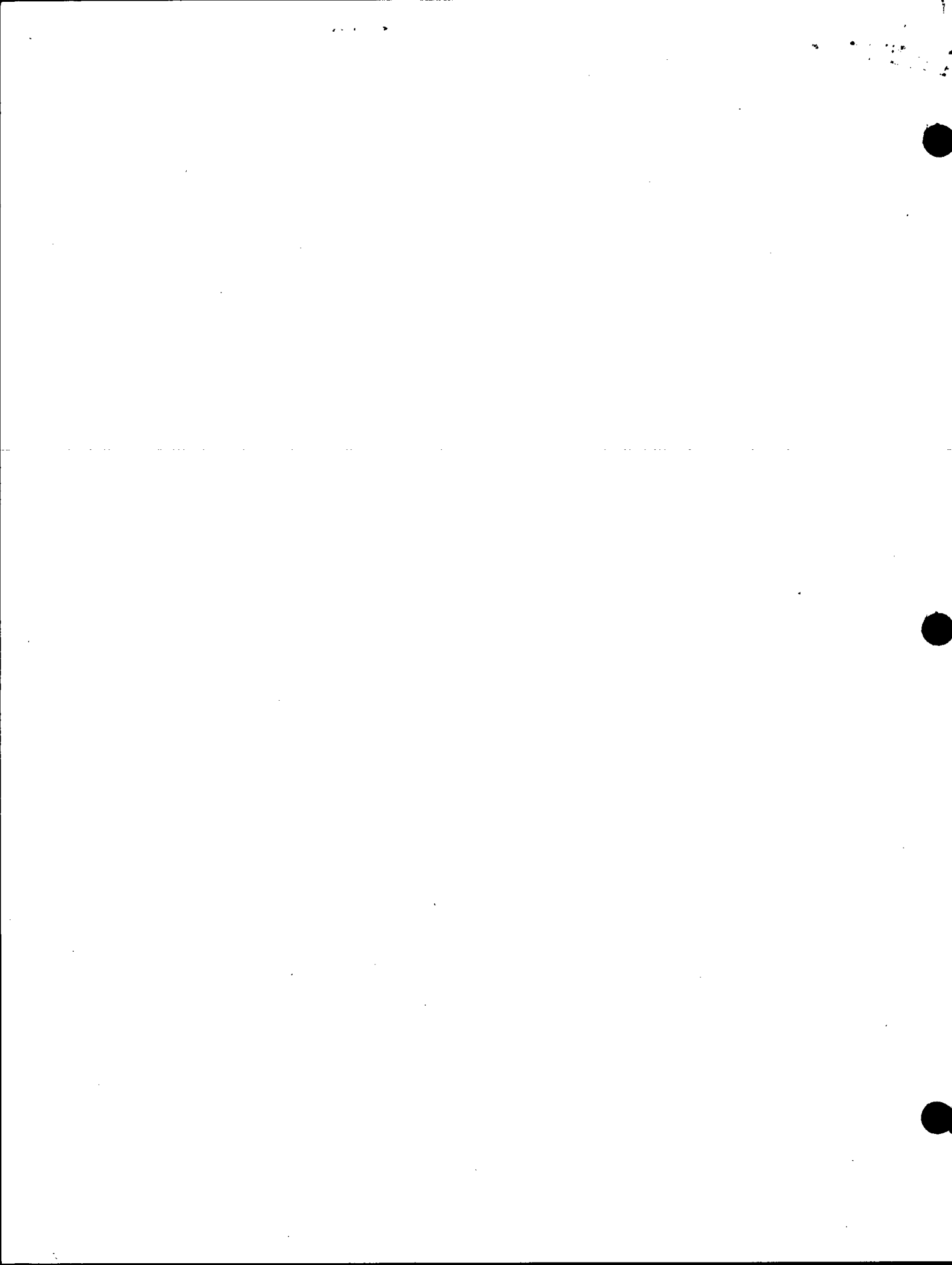
Show at least four ties, also fence lines, roads, topo, size and type of witness trees and if off road - best way to arrive at corner.



MAINTENANCE RECORD

Date	Init.	Remarks

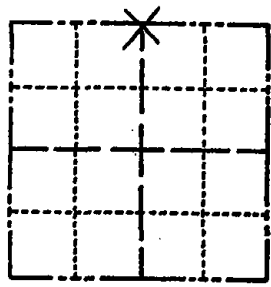
TIES ON 9/1/83
Deliver to be Replaced (54)



Government Land Corner Certificate

ADAMS County
 TYPE OF MONUMENT: _____
 STATE PLANE COORDINATES: N _____
 E _____
 ELEVATION — M.S.L. DATUM: _____
 THETA ANGLE: _____
 FIELD BOOK: 76 PAGE 10
 DRAWN BY: ROGER NUBER

CORNER NO. 42
 SECTION 18
 TOWN 20
 RANGE 7



LOCATION
 (Indicated by 'X')

BASIS FOR MONUMENT LOCATION

Show info such as: History of corner, with reference to Vol. and pg., dates, surveyor; exact description of monument replaced; if location computed, by taped or EDM traverse; landowner remarks, etc. (Use reverse side if necessary)

Set equidistant and on line between adjacent section corners.

No evidence of any previous monumentation was found.

SEAL:



DATA SHOWN HERE ON CERTIFIED CORRECT:

Gregory P. Rhinehart
 Registered Land Surveyor

DATE: 6/4/79

TIE SKETCH

Show at least four ties, also fence lines, roads, topo, size and type of witness trees and if off road - best way to arrive at corner.

