

07 SECTION 20 TOWN 07 RANGE

# ADAMS COUNTY

COUNTY CORNER NO.: 43  
 ROMPORTOL ID: 42007070000

## PUBLIC LAND SURVEY MONUMENT RECORD

TYPE OF MONUMENT: 3/4" IRON ROD  
 ADAMS COUNTY COORDINATES, NAD 83 (2007)

N. 308941.829

E. 562069.338

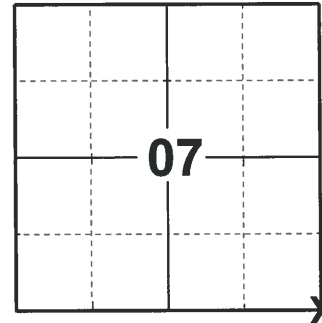
ELEVATION- - - - DATUM - - - -

FIELD WORK DATE: 02/19/2020

### BASIS FOR MONUMENT LOCATION

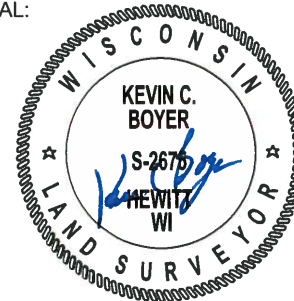
1979 - PLS 1478 SET MONUMENT BY RETRACING TIES BY RAY PHILLIPS AS RECORDED IN VOL. 2 PAGE 165 OF THE ADAMS COUNTY SURVEYOR RECORDS.

2020 - PLS 2675 FOUND A 3/4" IRON ROD 6"± BELOW THE ROAD SURFACE, 1 TIE, AND 2 WITNESSES. THE MONUMENT AGREES WITH THE TIE AND WITNESSES. ACCEPTED THE 3/4" IRON ROD AS THE CORNER LOCATION. SET 3 NEW TIES AND MEASURED TO THE EXISTING TIES AND WITNESSES.



**LOCATION**  
 (INDICATE CORNER BY "X")

SEAL:



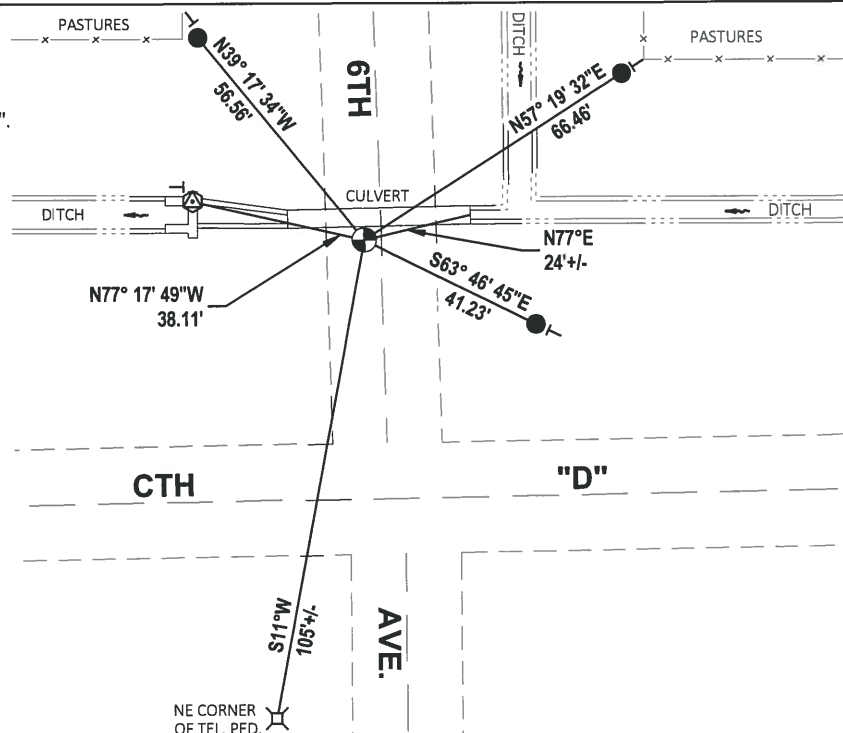
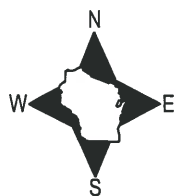
DATA SHOWN HERE ON THIS TIE SHEET IS CORRECT AND COMPLETE TO THE BEST OF MY KNOWLEDGE AND BELIEF.

PROFESSIONAL LAND SURVEYOR

DATE 3/9/2020

### - TIE SKETCH -

NOTE: THE CORNER LANDS 4'± WEST OF CENTERLINE OF 6TH AVE AND 56'± NORTH OF CENTERLINE OF CTH "D".



- SET 3/4" x 18" IRON REBAR, 1.50#/FT
- ⊕ FOUND U.S.G.S. BENCHMARK BRASS CAP
- ⊙ FOUND 3/4" IRON ROD
- ⊥ VINYL "T" POST



