

## PUBLIC LAND SURVEY MONUMENT RECORD

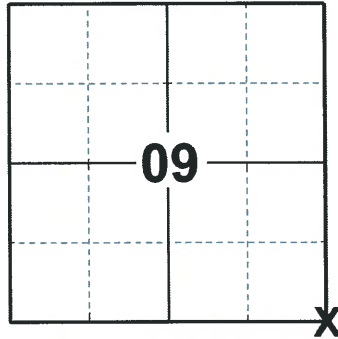
TYPE OF MONUMENT: SURVEY MAG SPIKE  
ADAMS COUNTY COORDINATES, NAD 83 (2007)

N. 309007.350

E. 572772.394

ELEVATION- \_\_\_\_\_ DATUM \_\_\_\_\_

FIELD WORK DATE: 02/17/2020



**LOCATION**  
(INDICATE CORNER BY "X")

### BASIS FOR MONUMENT LOCATION

1982 - PLS 1444 THIS CORNER WAS SET BY DOUBLE PROPORTIONATE MEASURE BETWEEN THE NW OF SECTION 17 AND THE NE OF SECTION 15. DID NOT EXCAVATE AS DITCHING WOULD HAVE DESTROYED ANY EVIDENCE OF THE CORNER.

2020 - PLS 2675 FOUND A SURVEY MAG SPIKE IN THE ROAD SURFACE AND 1 WITNESS. REMOVED THE SURVEY MAG SPIKE AND FOUND NO OTHER EVIDENCE OF ANY ADDITIONAL MONUMENTS. THE MONUMENT AGREES WITH THE WITNESS. ACCEPTED THE SURVEY MAG SPIKE AS THE CORNER LOCATION. RE-SET THE SURVEY MAG SPIKE IN IT'S FOUND LOCATION. SET 4 NEW TIES AND MEASURED TO THE EXISTING WITNESS.

SEAL:



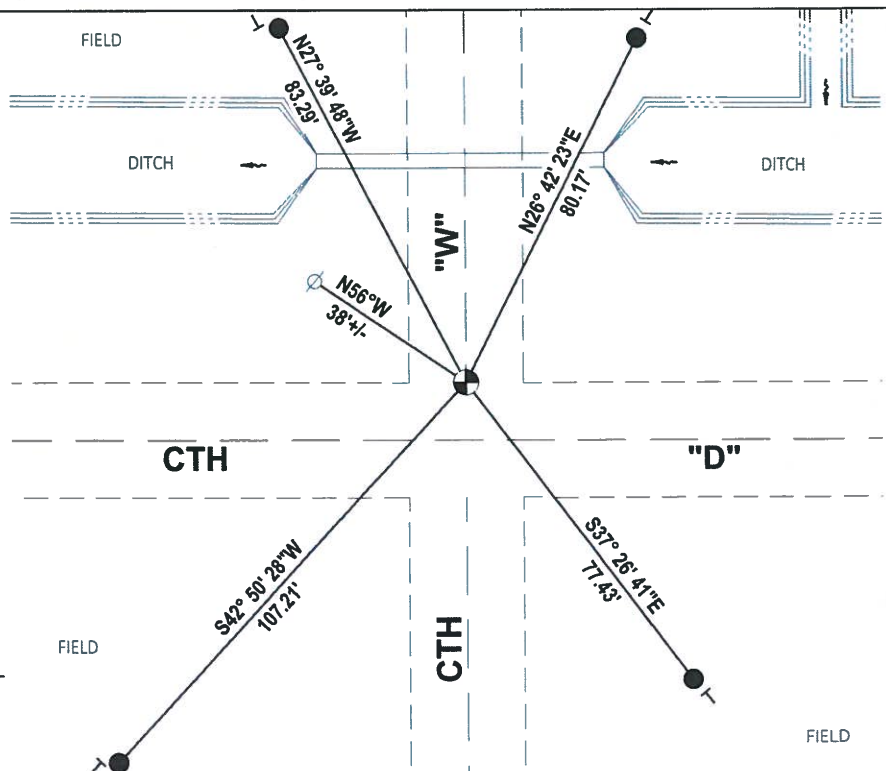
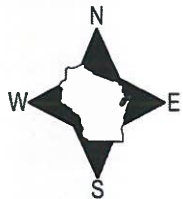
DATA SHOWN HERE ON THIS TIE SHEET IS CORRECT AND COMPLETE TO THE BEST OF MY KNOWLEDGE AND BELIEF.

PROFESSIONAL LAND SURVEYOR

DATE 3/25/2020

### - TIE SKETCH

NOTE: THE CORNER LANDS ON THE CENTERLINE OF CTH "W" AND 12± NORTH OF CTH "D" CENTERLINE.

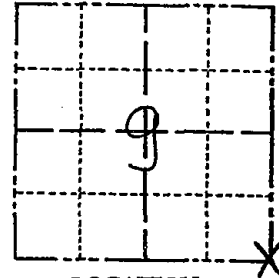


- SET 3/4" x 18" IRON REBAR, 1.50#/FT
- ⊙ FOUND SURVEY MAG SPIKE MONUMENT
- ⊗ WITNESS POWER POLE
- └ VINYL "T" POST

# Government Land Corner Certificate

ADAMS County  
 TYPE OF MONUMENT: HARRISON  
 STATE PLANE COORDINATES: N \_\_\_\_\_  
 E \_\_\_\_\_  
 ELEVATION — M.S.L. DATUM: \_\_\_\_\_  
 THETA ANGLE: \_\_\_\_\_  
 FIELD BOOK: 88 PAGE 149  
 DRAWN BY: S.J.H.

CORNER NO. 47  
 SECTION 9  
 TOWN 20  
 RANGE 7

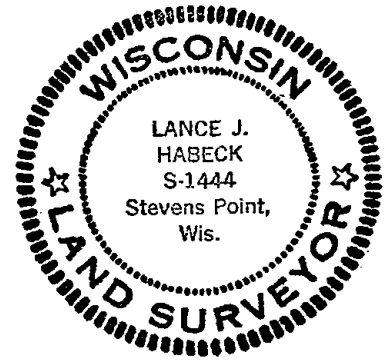


## BASIS FOR MONUMENT LOCATION

Show info such as: History of corner, with reference to Vol. and pg., dates, surveyor; exact description of monument replaced; if location computed, by taped or EDM traverse; landowner remarks, etc. (Use reverse side if necessary)

LOCATION  
 (Indicated by 'X')

SEAL:



DATA SHOWN HERE ON  
 CERTIFIED CORRECT:

*Lance J. Habeck*  
 Registered Land Surveyor

DATE: 6/9/82

This corner was set by double proportionate measure between the NWx of sec. 17 and the NEx of sec. 15. Did not excavate as ditching would have destroyed any evidence of the corner.

Ok 4-30-84 DK-SS

NO EVIDENCE 10-07-09

## TIE SKETCH

Show at least four ties, also fence lines, roads, topo, size and type of witness trees and if off road - best way to arrive at corner.

