

10
SECTION

20
TOWN

07
RANGE

ADAMS COUNTY

COUNTY CORNER NO: 49
ROMPORTOL ID: 42007100000

PUBLIC LAND SURVEY MONUMENT RECORD

TYPE OF MONUMENT: HARRISON
ADAMS COUNTY COORDINATES, NAD 83 (2007)

N. 308960.660

E. 578055.575

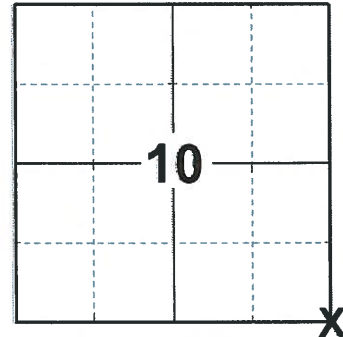
ELEVATION- _____ DATUM _____

FIELD WORK DATE: 12/09/2019

BASIS FOR MONUMENT LOCATION

1982 - PLS 878 NO RESURVEYS OF THIS CORNER ON RECORD. SEARCHED FOR BEARING TREES, NONE REMAIN. ANY EVIDENCE OF MONUMENTATION DESTROYED BY DITCHING. HELD THE CENTERLINE OF 3RD AVENUE FOR EAST-WEST LOCATION OF CORNER. FOR NORTH-SOUTH LOCATION OF CORNER USED THE DISTANCE BETWEEN THE NW CORNER OF SECTION 11 AND THE W 1/4 CORNER OF SECTION 11 (2644.97'), AS THIS FITS ORIGINAL GOVERNMENT SURVEY DISTANCES FAIRLY CLOSE.

2020 - PLS 2675 FOUND HARRISON MONUMENT 18"± BELOW THE ROAD SURFACE AND 3 WITNESSES. THE MONUMENT AGREES WITH ALL OF THE EXISTING WITNESSES. ACCEPTED THE HARRISON MONUMENT AS THE CORNER LOCATION. SET 4 NEW TIES AND MEASURED THE THE EXISTING WITNESSES.



LOCATION
(INDICATE CORNER BY "X")

SEAL:



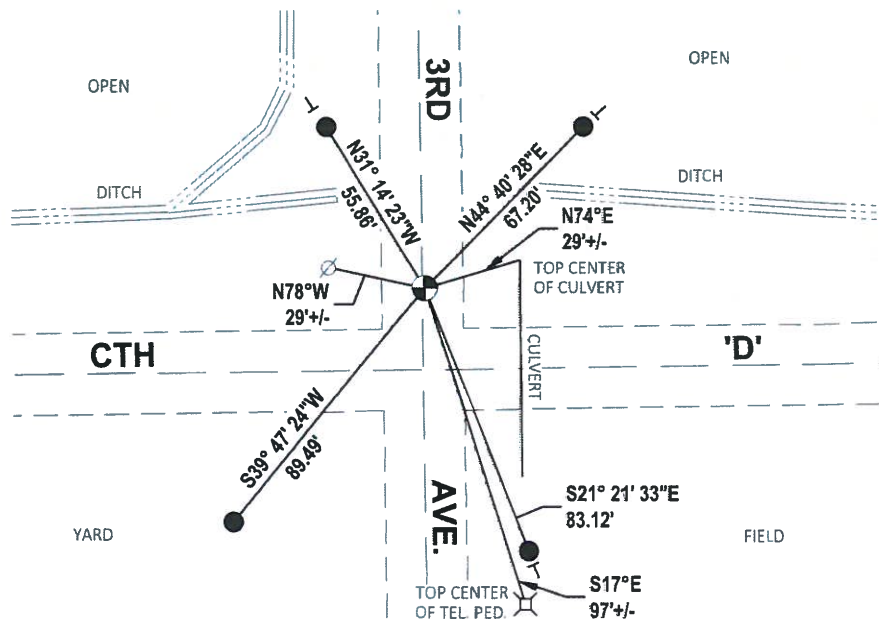
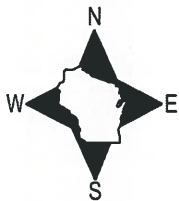
DATA SHOWN HERE ON THIS TIE SHEET IS CORRECT AND COMPLETE TO THE BEST OF MY KNOWLEDGE AND BELIEF.

PROFESSIONAL LAND SURVEYOR

DATE 3/25/2020

- TIE SKETCH

NOTE: THE CORNER LANDS 0.7'± EAST OF 3RD AVE. CENTERLINE AND 24'± NORTH OF CTH 'D' CENTERLINE.

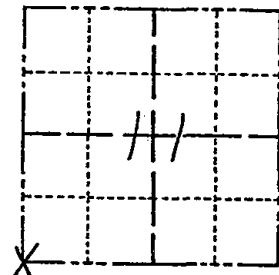


- SET 3/4" x 18" IRON REBAR, 1.50#/FT
- ⊙ FOUND HARRISON MONUMENT
- ⊙ WITNESS POWER POLE
- ┌ VINYL "T" POST

Government Land Corner Certificate

ADAMS County
 TYPE OF MONUMENT: HARRISON
 STATE PLANE COORDINATES: N _____
 E _____
 ELEVATION — M.S.L. DATUM: _____
 THETA ANGLE: _____
 FIELD BOOK: 88 PAGE 132
 DRAWN BY: S.J.H.

CORNER NO. 49
 SECTION 11
 TOWN 20
 RANGE 7



LOCATION
 (Indicated by 'X')

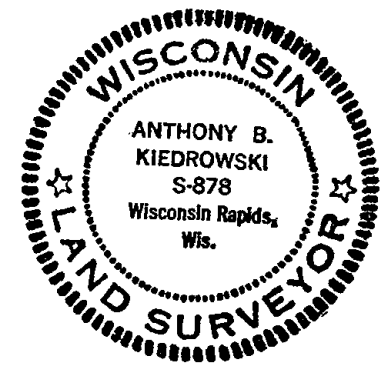
BASIS FOR MONUMENT LOCATION

Show info such as: History of corner, with reference to Vol. and pg., dates, surveyor; exact description of monument replaced; if location computed, by taped or EDM traverse; landowner remarks, etc. (Use reverse side if necessary)

No resurveys of this corner on record. Searched for bearing trees, none remain. Any evidence of monumentation destroyed by ditching. Held the centerline of 3rd Avenue for East-West location of corner. For North-South location of corner used the distance between the NW corner of Section 11 and the W $\frac{1}{2}$ corner of Section 11 (2644.97'), as this fits original government survey distances fairly close.

Ok 4-30-84 SS-DK

SEAL:



DATA SHOWN HERE ON
 CERTIFIED CORRECT:

Anthony B. Kiedrowski
 Registered Land Surveyor

DATE: 5-25-82

TIE SKETCH

Show at least four ties, also fence lines, roads, topo, size and type of witness trees' and if off road - best way to arrive at corner.

