

11  
SECTION

20  
TOWN

07  
RANGE

# ADAMS COUNTY

COUNTY CORNER NO: 51  
ROMPORTOL ID: 42007110000

## PUBLIC LAND SURVEY MONUMENT RECORD

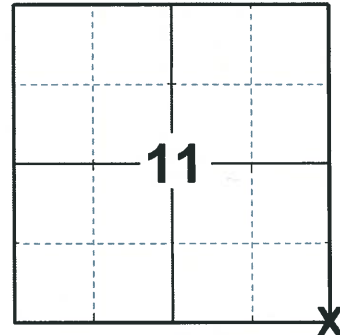
TYPE OF MONUMENT: SURVEY NAIL  
ADAMS COUNTY COORDINATES, NAD 83 (2007)

N. 309041.062

E. 583333.537

ELEVATION-          DATUM         

FIELD WORK DATE: 02/17/2020



**LOCATION**  
(INDICATE CORNER BY "X")

### BASIS FOR MONUMENT LOCATION

1973 - PLS 878 SET BY ANALYZING A TRAVERSE OF SECTION 13, COMPARING POSSESSION LINES WITH ORIGINAL NOTES.

1982 - PLS 878 CORNER LOST IN CONSTRUCTION. SET NEW MONUMENT AND TOOK NEW TIES.

2020 - PLS 2675 FOUND SURVEY NAIL AND 4 TIES. REMOVED THE SURVEY NAIL AND DID NOT FIND ANY ADDITIONAL MONUMENTS BELOW. DID NOT RECOVER ANY TIES ON CURRENT TIE SHEET ON RECORD (2002), BUT FOUND 4 TIES WITH NO RECORD. RESET THE SURVEY NAIL IN THE FOUND LOCATION. ACCEPTED THE SURVEY NAIL AS THE CORNER LOCATION AND MEASURED TO THE FOUND TIES.

SEAL:



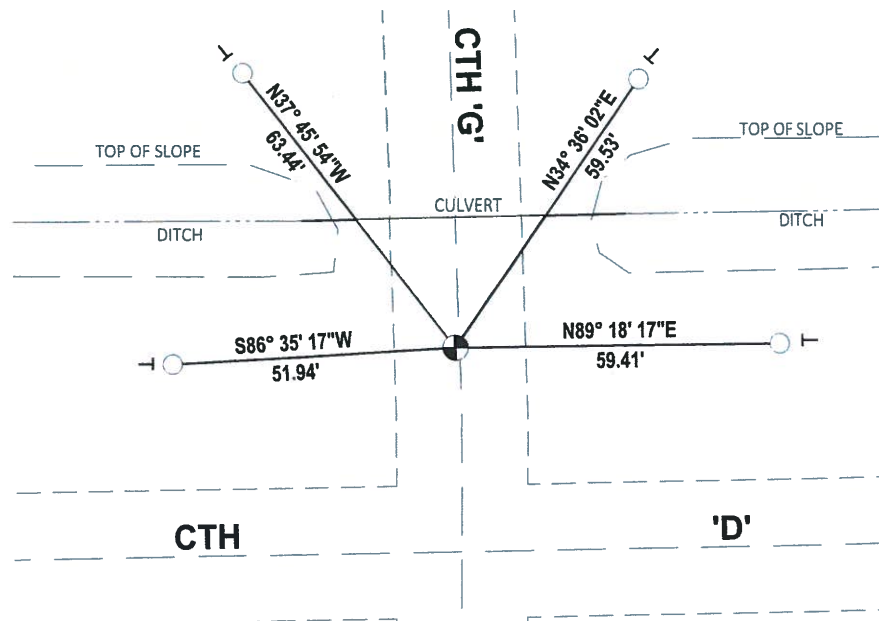
DATA SHOWN HERE ON THIS TIE SHEET IS CORRECT AND COMPLETE TO THE BEST OF MY KNOWLEDGE AND BELIEF.

PROFESSIONAL LAND SURVEYOR

DATE 3/25/2020

### - TIE SKETCH

NOTE: THE CORNER LANDS 0.8'± WEST OF CTH 'G' AND 37'± NORTH OF CTH 'D' CENTERLINE.



- FOUND 3/4" IRON ROD
- FOUND SURVEY NAIL MONUMENT
- ┊ VINYL "T" POST

No change

# Government Land Corner Certificate

ADAMS County

TYPE OF MONUMENT: HARRISON

STATE PLANE COORDINATES: N \_\_\_\_\_  
E \_\_\_\_\_

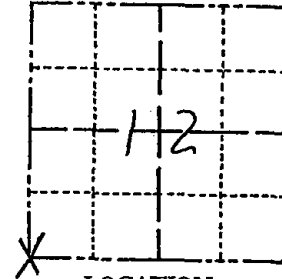
ELEVATION — M.S.L. DATUM: \_\_\_\_\_

THETA ANGLE: \_\_\_\_\_

FIELD BOOK: 88 PAGE 130

DRAWN BY: S.J.H.

CORNER NO. 51  
SECTION 12  
TOWN 20  
RANGE 7



LOCATION  
(Indicated by 'X')

## BASIS FOR MONUMENT LOCATION

Show info such as: History of corner, with reference to Vol. and pg., dates, surveyor; exact description of monument replaced; if location computed, by taped or EDM traverse; landowner remarks, etc. (Use reverse side if necessary)

Set by analyzing a traverse of Section 13, comparing possession lines with original notes.

*corners lost in construction.  
set new monument & took  
new ties.*

*All OK 12-22-04 DLA*

SEAL:



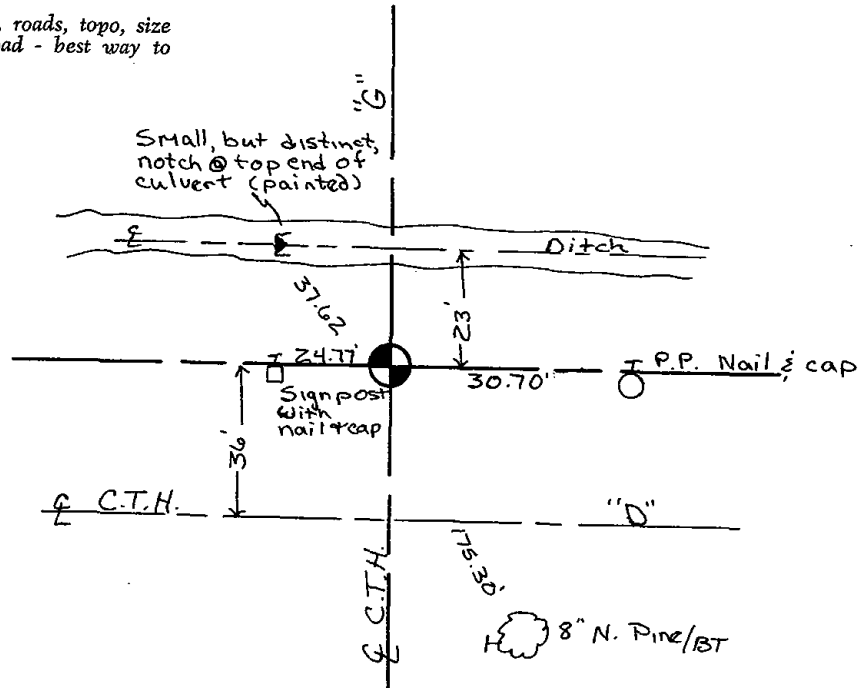
DATA SHOWN HERE ON  
CERTIFIED CORRECT:

*ABK Kiedrowski*  
Registered Land Surveyor

DATE: 5-25-02

## TIE SKETCH

Show at least four ties, also fence lines, roads, topo, size and type of witness trees' and if off road - best way to arrive at corner.





ADAMS COUNTY

Survey Monument Record

TYPE OF MONUMENT: Harrison Std.

STATE PLANE COORDINATES: N \_\_\_\_\_

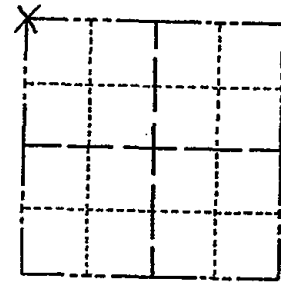
E \_\_\_\_\_

ELEVATION — M.S.L. DATUM: \_\_\_\_\_

THETA ANGLE: \_\_\_\_\_

FIELD BOOK: 108 PAGE 18

CORNER NO. 272 (51)  
SECTION 13  
TOWN 20  
RANGE 7



LOCATION  
(Indicated by 'X')

SEAL:

BASIS FOR MONUMENT LOCATION

(Use reverse side if necessary)

Show info such as: History of corner, with reference to Vol. and pg, dates, surveyor; exact description of monument replaced; if location computed, by taped or EDM traverse; landowner remarks, etc.

Set by analyzing a traverse of the entire section, comparing possession lines with original notes.



See the reverse side for the updated map 5-4-84

O.K. 3-22-79 RN-JSK

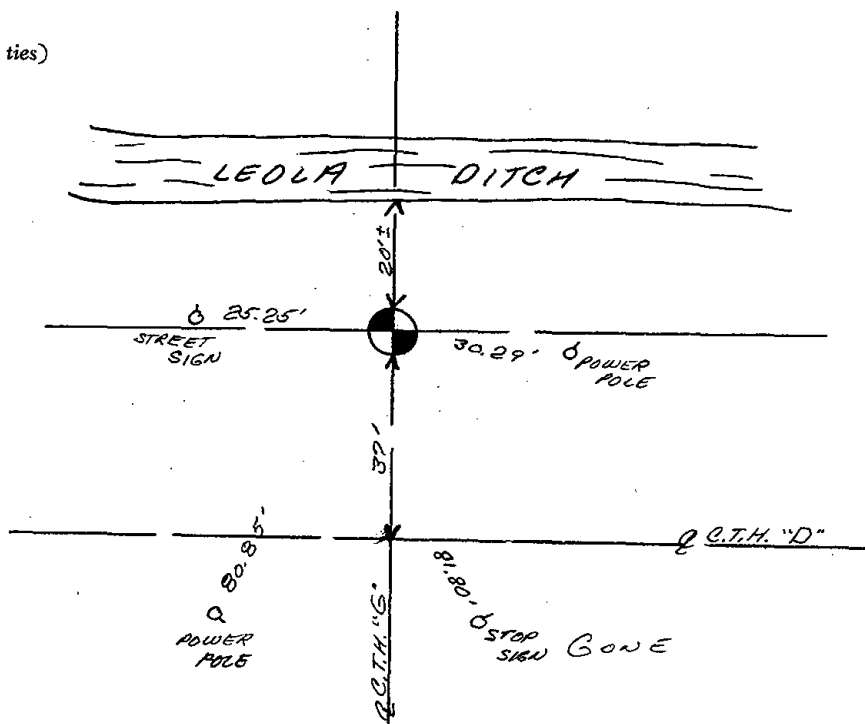
CERTIFIED CORRECT:

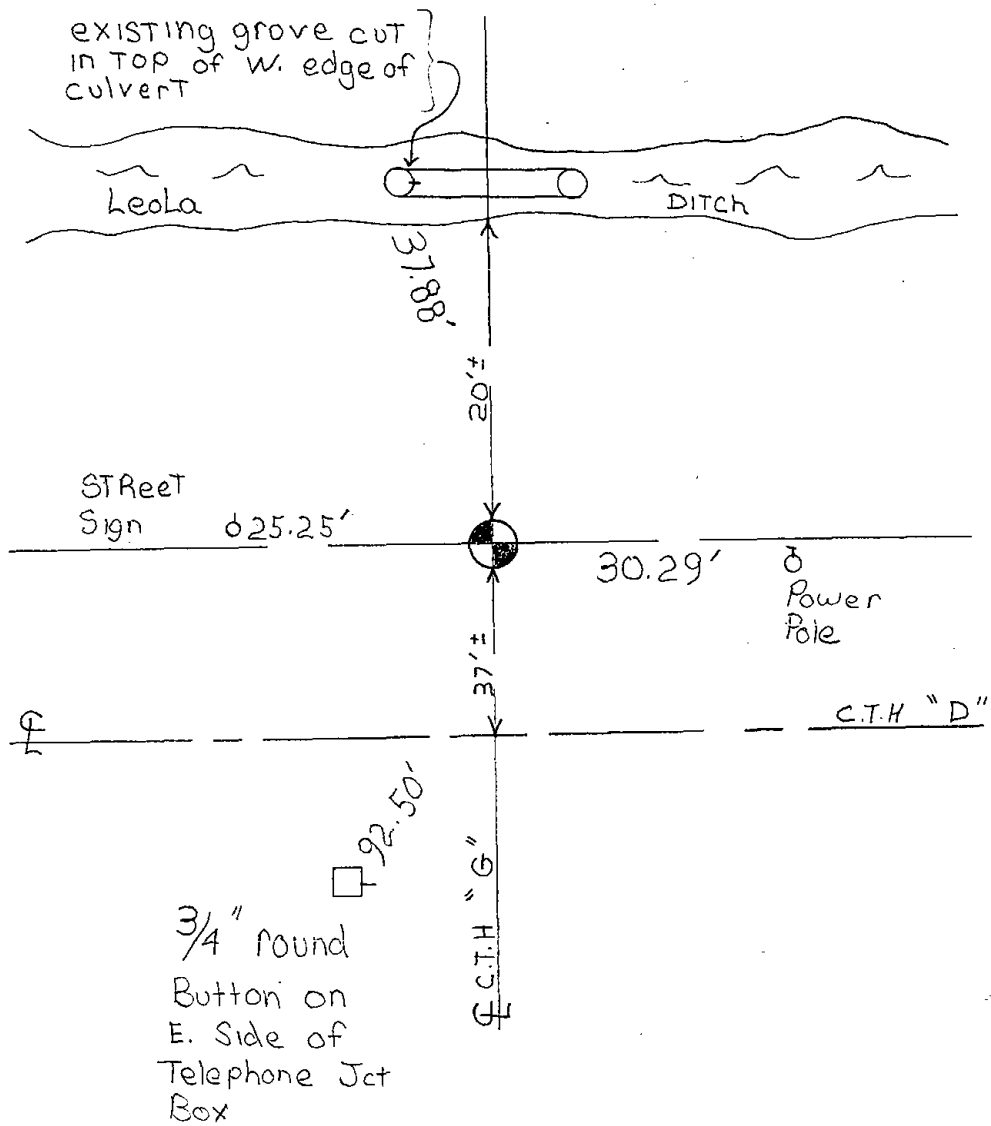
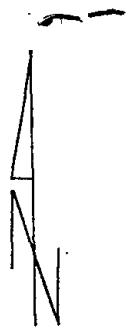
*Anthony B. Kiedrowski*  
Registered Land Surveyor

DATE: 3/21/73

TIE SKETCH

(Show at least four ties)





New ties were set on 5-4-84 SS-DK