

12
SECTION

20
TOWN

07
RANGE

ADAMS COUNTY

COUNTY CORNER NO: 52

ROMPORTOL ID: 42007120020

PUBLIC LAND SURVEY MONUMENT RECORD

TYPE OF MONUMENT: HARRISON (BROKEN-TOP)
ADAMS COUNTY COORDINATES, NAD 83 (2007)

N. 309087.713

E. 585935.712

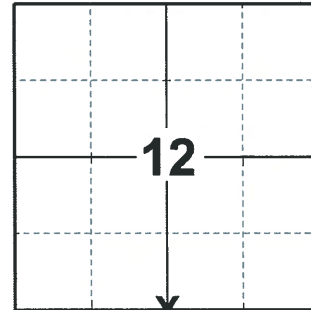
ELEVATION- - - - - DATUM - - - - -

FIELD WORK DATE: 02/17/2020

BASIS FOR MONUMENT LOCATION

1973 - PLS 878 SET ON A STRAIGHT LINE EQUIDISTANT BETWEEN SECTION CORNERS.

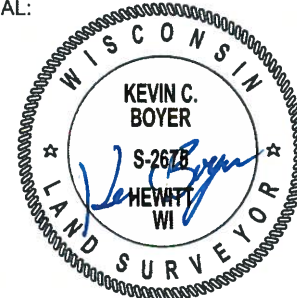
2020 - PLS 2675 FOUND HARRISON (BROKEN-TOP) 6"± BELOW THE GROUND, 2 TIES AND 1 WITNESS. THE MONUMENT AGREES WITH ALL TIES AND WITNESS. ACCEPTED THE HARRISON (BROKEN-TOP) AS THE CORNER LOCATION. SET 2 NEW TIES AND MEASURED TO THE EXISTING TIES AND WITNESS.



LOCATION

(INDICATE CORNER BY "X")

SEAL:



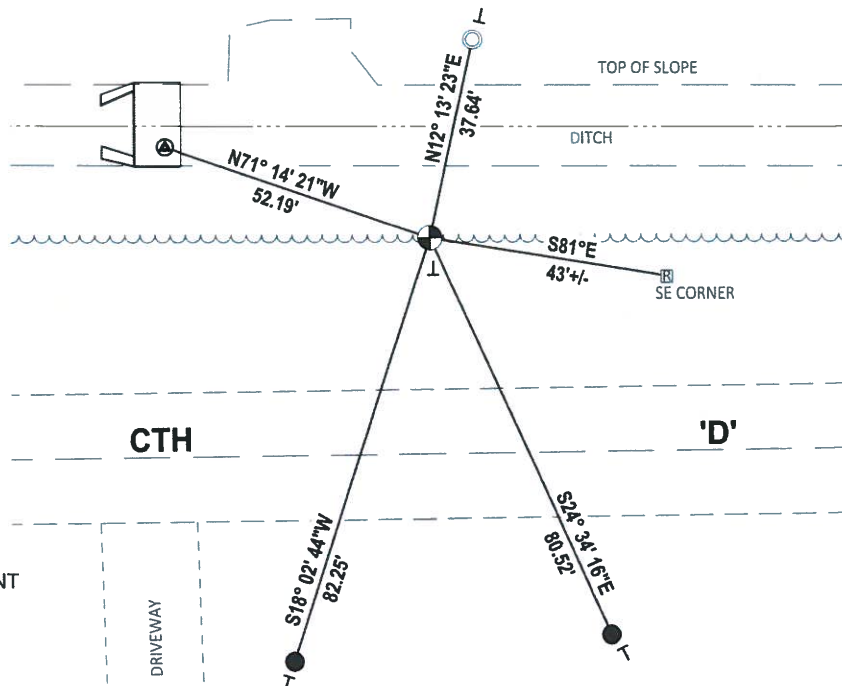
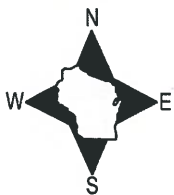
DATA SHOWN HERE ON THIS TIE SHEET IS CORRECT AND COMPLETE TO THE BEST OF MY KNOWLEDGE AND BELIEF.

PROFESSIONAL LAND SURVEYOR

DATE 3/25/2020

- TIE SKETCH

NOTE: THE CORNER LANDS 40'± NORTH OF CTH 'D' CENTERLINE.



- SET 3/4" x 18" IRON REBAR, 1.50#/FT
- FOUND 1-1/4" O.D. IRON PIPE
- ⊕ FOUND HARRISON (BROKEN-TOP) MONUMENT
- ⊖ VINYL "T" POST
- ⊙ USGS BENCHMARK
- Ⓜ RIGHT OF WAY POST

ADAMS COUNTY

Survey Monument Record

TYPE OF MONUMENT: Harrison std.

STATE PLANE COORDINATES: N _____

E _____

ELEVATION — M.S.L. DATUM: _____

THETA ANGLE: _____

FIELD BOOK: 108 PAGE 18

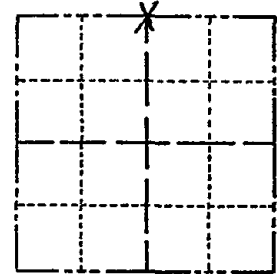
CORNER NO. 273

SECTION 13

TOWN 20

RANGE 7

52



LOCATION
(Indicated by 'X')

SEAL:



BASIS FOR MONUMENT LOCATION

(Use reverse side if necessary)

Show info such as: History of corner, with reference to Vol. and pg. dates, surveyor; exact description of monument replaced; if location computed, by taped or EDM traverse; landowner remarks, etc.

Set on a straight line equidistant between section corners.

Ok 4-30-84 DK-SS

O.K. 3-22-79 AN-JSK

1-GONE, 2-NEW TIES, 6-14-94-JG/CR
OK 2-22-99-JG
07-07-09 SS-TOP GONE-BOTTOM IN PLACE

CERTIFIED CORRECT:

Anthony B. Kiedrowski
Registered Land Surveyor

DATE: 3/21/73

TIE SKETCH

(Show at least four ties)

