

12 SECTION 20 TOWN 07 RANGE

# ADAMS COUNTY

COUNTY CORNER NO: 53  
 ROMPORTOL ID: 42007120000

## PUBLIC LAND SURVEY MONUMENT RECORD

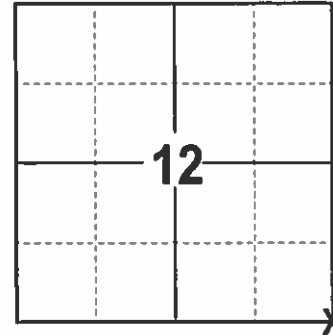
TYPE OF MONUMENT: 3/4" REBAR  
 ADAMS COUNTY COORDINATES, NAD 83 (2007)

N. 309135.381

E. 588537.934

ELEVATION-      DATUM     

FIELD WORK DATE: 12/22/2016



**LOCATION**  
 (INDICATE CORNER BY "X")

SEAL:

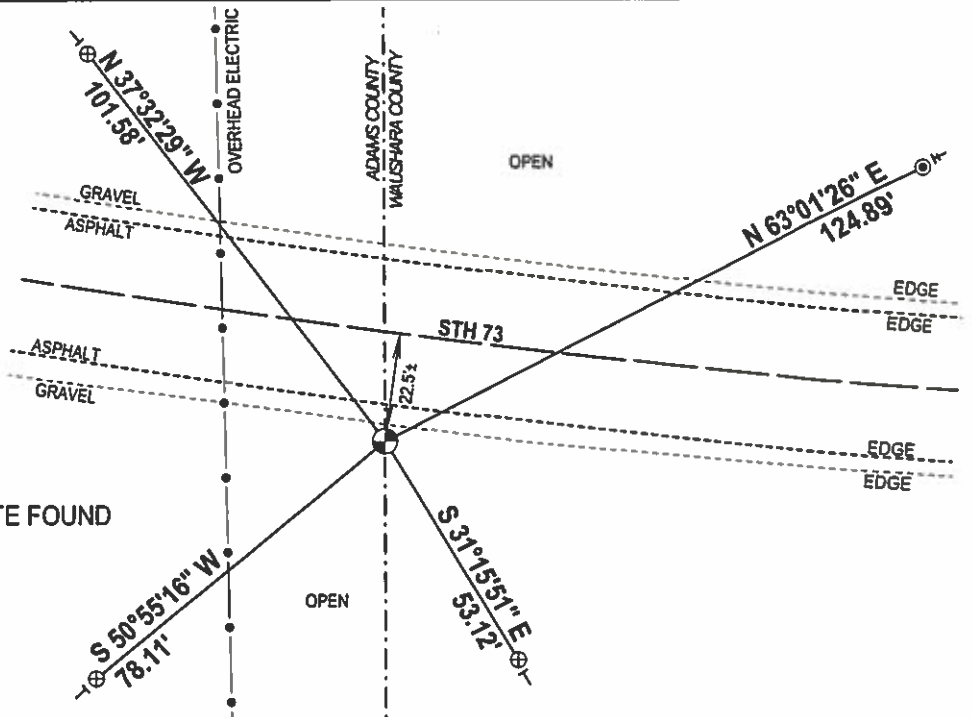
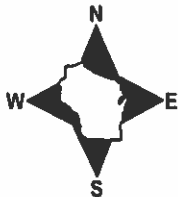


DATA SHOWN HERE ON THIS TIE SHEET IS CORRECT AND COMPLETE TO THE BEST OF MY KNOWLEDGE AND BELIEF.

PROFESSIONAL LAND SURVEYOR

DATE 2/9/17

TIE SKETCH



- 3/4" X 18" IRON REBAR SET, 1.50#/FT
- ⊕ WisDOT ALUMINUM CAP FOUND
- ⊙ WisDOT ALUMINUM CAP IN CONCRETE FOUND
- ⊕ 3/4" REBAR FOUND
- ⊕ STEEL POST FOUND
- ⊖ VINYL "T" POST

