

18
SECTION

20
TOWN

07
RANGE

ADAMS COUNTY

COUNTY CORNER NO: 63

ROMPORTOL ID: 42007180000

PUBLIC LAND SURVEY MONUMENT RECORD

TYPE OF MONUMENT: 1-1/4" IRON ROD
ADAMS COUNTY COORDINATES, NAD 83 (2007)

N. 303660.562

E. 562059.182

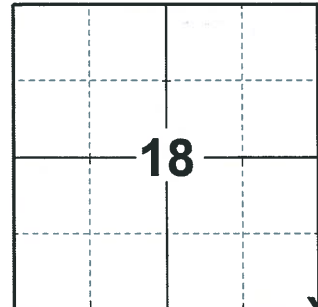
ELEVATION- DATUM

FIELD WORK DATE: 02/25/2020

BASIS FOR MONUMENT LOCATION

1981 - PLS 878 EXCAVATED WITH BACKHOE. FOUND 16"x10"x15" SANDSTONE DIRECTLY OVER THE BOTTOM 8" OF A 4" DIAMETER POINTED WOOD STAKE. LOWERED THE STONE AND SET A HARRISON MONUMENT ON TOP. NO RECORD OF STONE, LOCATION VERIFIED BY A TRAVERSE OF THE SECTION.

2020 - PLS 2675 FOUND 1-1/4" IRON ROD 12"± BELOW THE ROAD SURFACE AND 2 TIES. THE MONUMENT AGREES WITH BOTH TIES. ACCEPTED THE 1-1/4" IRON ROD AS THE CORNER LOCATION. SET 1 NEW TIE, MEASURED TO A FOUND IRON ROD AND THE EXISTING TIES.



LOCATION

(INDICATE CORNER BY "X")

SEAL:



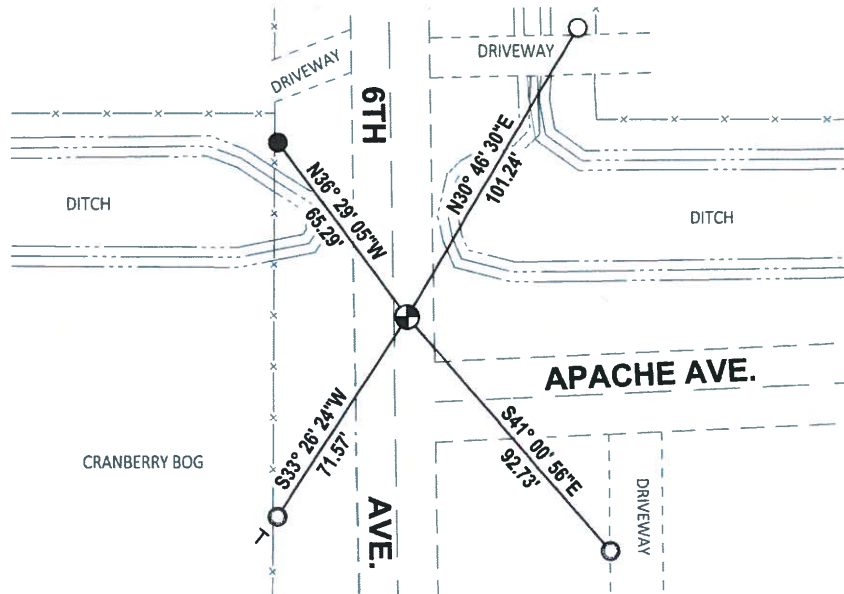
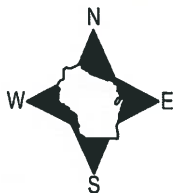
DATA SHOWN HERE ON THIS TIE SHEET IS CORRECT AND COMPLETE TO THE BEST OF MY KNOWLEDGE AND BELIEF.

PROFESSIONAL LAND SURVEYOR

DATE 3/25/2020

TIE SKETCH

NOTE: THE CORNER LANDS 4.1'± EAST OF 6TH AVE. CENTERLINE.

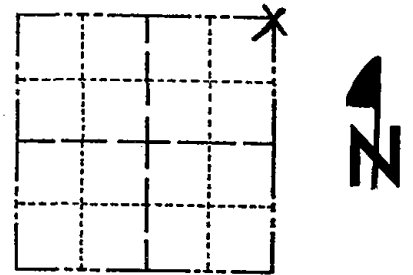


- SET 3/4" x 18" IRON REBAR, 1.50#/FT
- FOUND 3/4" IRON ROD
- FOUND 1-1/4" O.D. IRON PIPE
- ⊕ FOUND 1-1/4" IRON ROD MONUMENT
- VINYL "T" POST

Government Land Corner Certificate

ADAMS County
 TYPE OF MONUMENT: HARRISON
 STATE PLANE COORDINATES: N _____
 E _____
 ELEVATION — M.S.L. DATUM: _____
 THETA ANGLE: _____
 FIELD BOOK: 88 (102) PAGE 77 (118)
 DRAWN BY: L. COOMBS

CORNER NO. 63
 SECTION 19
 TOWN 20
 RANGE 7



LOCATION
 (Indicated by 'X')

BASIS FOR MONUMENT LOCATION

Show info such as: History of corner, with reference to Vol. and pg., dates, surveyor; exact description of monument replaced; if location computed, by taped or EDM traverse; landowner remarks, etc. (Use reverse side if necessary)

Excavated with backhoe. Found 16 x 10 x 15" sandstone directly over the bottom 8" of a 4" diameter pointed wood stake. Lowered the stone and set a Harrison monument on top. No record of stone, location verified by a traverse of the section.

Ok 4-20-84 SS-DK

OK 4/13/94 JG-SS

OK 2-19-99-JG

TIES OK 12-14-04 SSJS

SEAL:



DATA SHOWN HERE ON
 CERTIFIED CORRECT:

Anthony B. Kiedrowski
 Registered Land Surveyor

DATE: 11/4/81

TIE SKETCH

Show at least four ties, also fence lines, roads, topo, size and type of witness trees' and if off road - best way to arrive at corner.

