

17
SECTION

20
TOWN

07
RANGE

ADAMS COUNTY

COUNTY CORNER NO: 65
ROMPORTOL ID: 42007170000

PUBLIC LAND SURVEY MONUMENT RECORD

TYPE OF MONUMENT: HARRISON
ADAMS COUNTY COORDINATES, NAD 83 (2007)

N. 303690.531

E. 567405.112

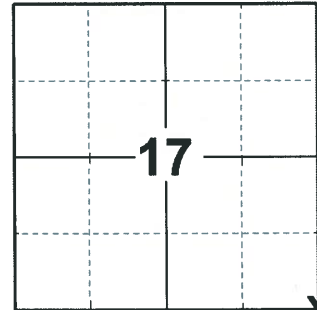
ELEVATION- DATUM

FIELD WORK DATE: 03/05/2020

BASIS FOR MONUMENT LOCATION

1981 - PLS 878 NO RECORD OF ANY RESURVEYS. CORNER IS SET BY DOUBLE PROPORTIONATE METHOD, BETWEEN THE NW CORNER OF SECTION 20 AND THE NE CORNER OF SECTION 23; AND BETWEEN THE SE CORNER OF SECTION 20 AND THE NE CORNER OF SECTION 17. DID NOT EXCAVATE IN ROAD SINCE THERE IS ABSOLUTELY NO EVIDENCE AS WHERE TO DIG. ROAD RUN ON TOP OF DITCH BANK.

2020 - PLS 2675 FOUND HARRISON MONUMENT 4"± ABOVE THE GROUND AND 1 TIE. THE MONUMENT AGREES WITH THE TIE. ACCEPTED THE HARRISON MONUMENT AS THE CORNER LOCATION. SET 3 NEW TIES AND MEASURED TO THE EXISTING TIE.



LOCATION
(INDICATE CORNER BY "X")

SEAL:



DATA SHOWN HERE ON THIS TIE SHEET IS CORRECT AND COMPLETE TO THE BEST OF MY KNOWLEDGE AND BELIEF.

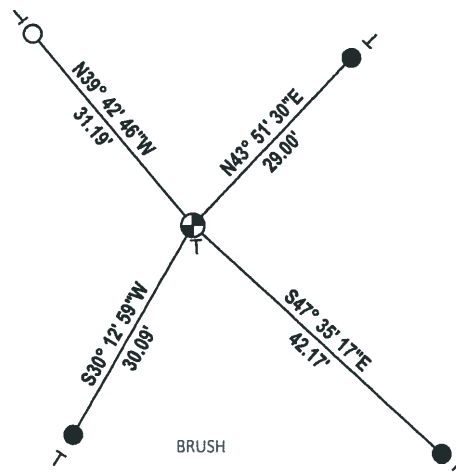
PROFESSIONAL LAND SURVEYOR

DATE 3/25/2020

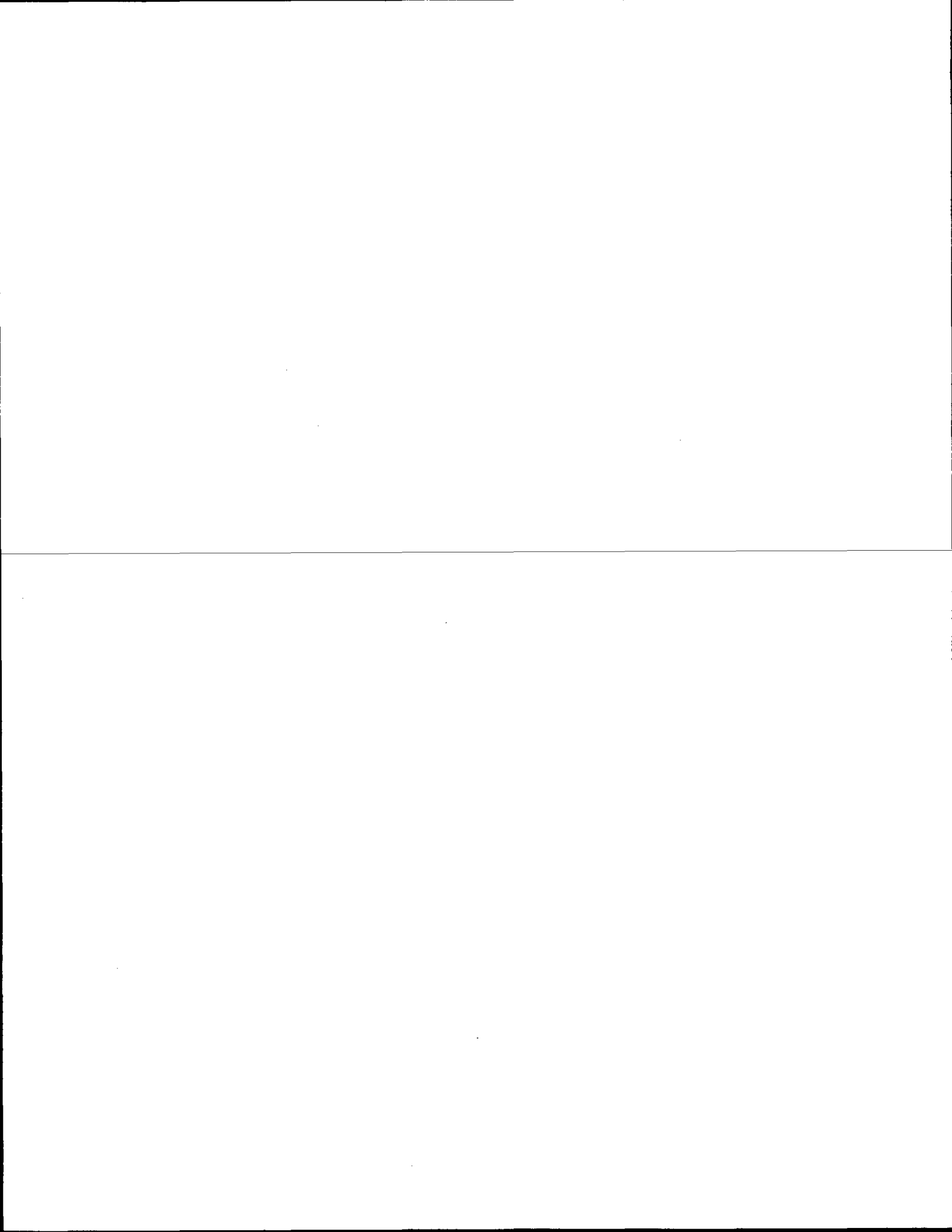
TIE SKETCH

NOTE: THE CORNER LANDS 41.3'± SOUTH OF APACHE AVE. CENTERLINE

APACHE AVE.



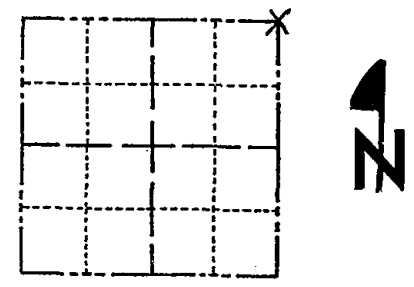
- SET 3/4" x 18" IRON REBAR, 1.50#/FT
- FOUND 3/4" IRON ROD
- ⊕ FOUND HARRISON MONUMENT
- ⊥ VINYL "T" POST



Government Land Corner Certificate

ADAMS County
 TYPE OF MONUMENT: HARRISON
 STATE PLANE COORDINATES: N _____
 E _____
 ELEVATION — M.S.L. DATUM: _____
 THETA ANGLE: _____
 FIELD BOOK: 88 PAGE 80
 DRAWN BY: L. COOMBS

CORNER NO. 65
 SECTION 20
 TOWN 20
 RANGE 7



LOCATION
 (Indicated by 'X')

BASIS FOR MONUMENT LOCATION

Show info such as: History of corner, with reference to Vol. and pg., dates, surveyor; exact description of monument replaced; if location computed, by taped or EDM traverse; landowner remarks, etc. (Use reverse side if necessary)

No record of any resurveys.
 Corner is set by double proportionate method, between the NW corner of section 20 and the NE corner of section 23; and between the SE corner of section 20 and the NE corner of section 17. Did not excavate in road since there is absolutely no evidence as where to dig. Road run on top of ditch bank.

SEAL:



DATA SHOWN HERE ON
 CERTIFIED CORRECT:

Anthony B. Kiedrowski
 Registered Land Surveyor

DATE: 11/4/81

- Ok 4-20-84 DK-SS
- 1 NEW TIE 4-15-94 JG-SS
- 3-NEW DISTANCES, MOD. OK 2-19-99 JG
- 3 NEW TIES - ALL TREES PRIOR TO '04 ARE DEAD 8-26-04 SS
- PURGED POST/SIGN @ MAR 03-02-09 SS

TIE SKETCH

Show at least four ties, also fence lines, roads, topo, size and type of witness trees and if off road - best way to arrive at corner.

