

16  
SECTION

20  
TOWN

07  
RANGE

# ADAMS COUNTY

COUNTY CORNER NO: 67

ROMPORTOL ID: 42007160000

## PUBLIC LAND SURVEY MONUMENT RECORD

TYPE OF MONUMENT: SURVEY NAIL

ADAMS COUNTY COORDINATES, NAD 83 (2007)

N. 303716.175

E. 572704.381

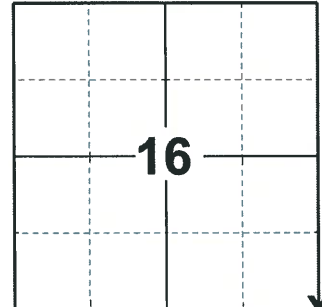
ELEVATION- - - - DATUM - - - -

FIELD WORK DATE: 02/24/2020

### BASIS FOR MONUMENT LOCATION

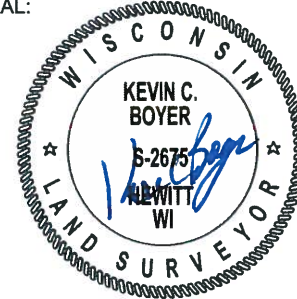
1981 - PLS 878 NO RECORD OF ANY RESURVEYS. EXCAVATED LARGE AREA 4' DEEP. FOUND MANY STONES, WHICH PROBABLY CAME FROM OLD BRIDGE, NOW DEMOLISHED, AND REPLACED BY STEEL CULVERTS. CORNER IS SET BY DOUBLE PROPORTIONATE METHOD, BETWEEN THE SE CORNER OF SECTION 21 AND THE NE CORNER OF SECTION 16; AND BETWEEN THE NW CORNER OF SECTION 20 AND THE NE CORNER OF SECTION 23.

2020 - PLS 2675 FOUND SURVEY NAIL IN THE ROAD SURFACE AND 3 WITNESSES. DID NOT RECOVER ANY ADDITION MONUMENTS BELOW. THE MONUMENT AGREES WITH ALL 3 WITNESSES ACCEPTED THE SURVEY NAIL AS THE CORNER LOCATION. SET 4 NEW TIES AND MEASURED TO THE EXISTING WITNESSES.



LOCATION  
(INDICATE CORNER BY "X")

SEAL:

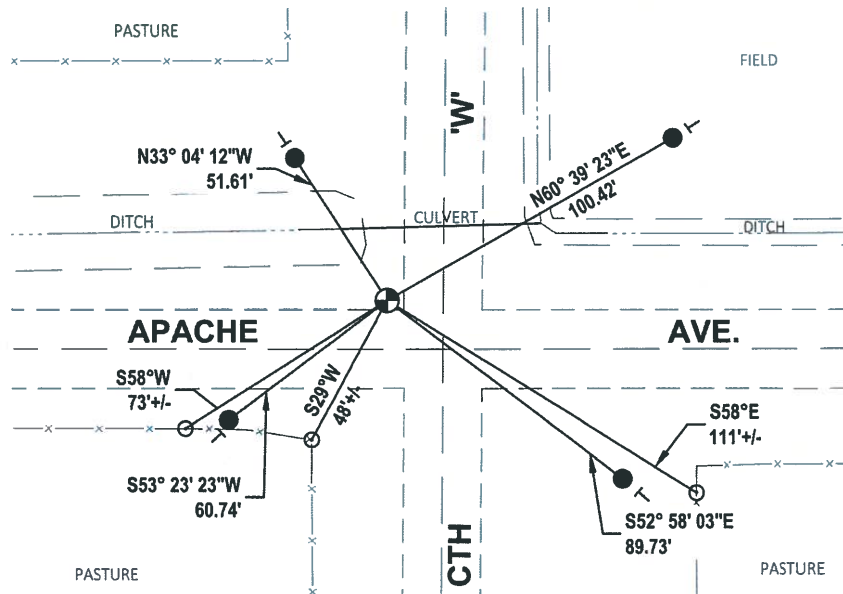


DATA SHOWN HERE ON THIS TIE SHEET IS CORRECT AND COMPLETE TO THE BEST OF MY KNOWLEDGE AND BELIEF.

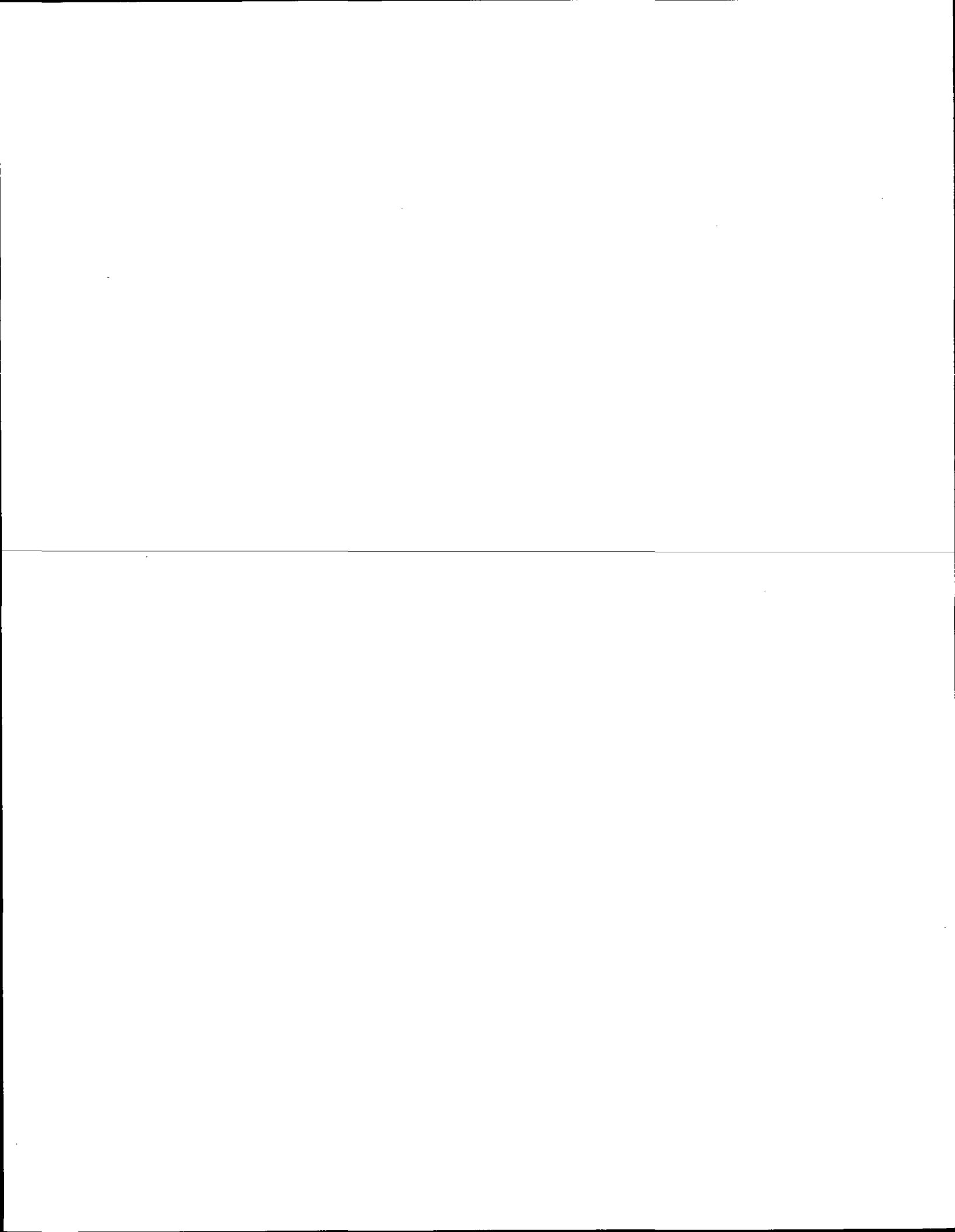
PROFESSIONAL LAND SURVEYOR

DATE 3/25/2020

### - TIE SKETCH



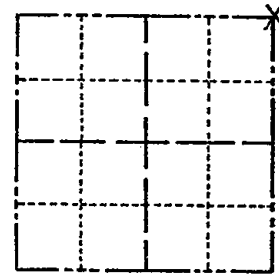
- SET 3/4" x 18" IRON REBAR, 1.50#/FT
- ⊕ FOUND SURVEY NAIL MONUMENT
- ┆ VINYL "T" POST
- ⊙ FENCE POST W/P.K. NAIL



# Government Land Corner Certificate

ADAMS County  
 TYPE OF MONUMENT: HARRISON  
 STATE PLANE COORDINATES: N \_\_\_\_\_  
 E \_\_\_\_\_  
 ELEVATION — M.S.L. DATUM: \_\_\_\_\_  
 THETA ANGLE: \_\_\_\_\_  
 FIELD BOOK: 88 PAGE 81  
 DRAWN BY: L. COOMBS

CORNER NO. 67  
 SECTION 21  
 TOWN 20  
 RANGE 7



## BASIS FOR MONUMENT LOCATION

Show info such as: History of corner, with reference to Vol. and pg., dates, surveyor; exact description of monument replaced; if location computed, by taped or EDM traverse; landowner remarks, etc. (Use reverse side if necessary)

No record of any resurveys. Excavated large area 4' deep. Found many stones, which probably came from old bridge, now demolished, and replaced by steel culverts. Corner is set by double proportionate method, between the SE corner of section 21 and the NE corner of section 16; and between the NW corner of section 20 and the NE corner of section 23.

SEAL:

LOCATION  
(Indicated by 'X')



DATA SHOWN HERE ON  
CERTIFIED CORRECT:

*Anthony B. Kiedrowski*  
Registered Land Surveyor

DATE: 11/4/81

Ok 4-20-84 DK-SS

OK 4/15/94 JG-SS

OK 2-19-99-JG

3 TIES REMAIN 11-10-04 SS  
MOW GONE

## TIE SKETCH

Show at least four ties, also fence lines, roads, topo, size and type of witness trees and if off road - best way to arrive at corner.

